



**ClubMates**  
TRAVEL

*The*  
**Specialists in**  
**Supported**  
*Holidays*





## TABLE OF

# Contents



LETTER FROM PETER .....	01
OUR COMPANY .....	02
OUR VALUES .....	03
MAKING A BOOKING .....	04
LET'S MAKE YOUR BOOKING EASIER .....	05
FREQUENTLY ASKED QUESTIONS .....	06
INDIVIDUAL AND SMALL GROUP HOLIDAYS .....	07
NEW YEAR'S EVE TOURS .....	08
VICTORIA TOURS .....	09 TO 12
NEW SOUTH WALES TOURS .....	13 TO 16
NORTHERN TERRITORY TOURS .....	17
QUEENSLAND TOURS .....	18 TO 20
SOUTH AUSTRALIA TOURS .....	21 TO 22
TASMANIA TOURS .....	23
WESTERN AUSTRALIA TOURS .....	24
INTERNATONAL TOURS .....	25
CRUISING TOURS .....	26 TO 28
MELBOURNE PRICES .....	29
SYDNEY PRICES .....	30
CANBERRA PRICES .....	31
DARWIN PRICES .....	32
BRISBANE PRICES .....	33
ADELAIDE PRICES .....	34
HOBART PRICES .....	35
PERTH PRICES .....	36
SNEAK PEAK .....	37

# LETTER FROM PETER



Travel is back and lockdowns are no more, so its onwards and upwards with Travel. Since the final lockdown we have been busy taking bookings for future holidays. You will notice in this brochure we have Cruising and International holidays which is exciting for the whole ClubMates family.

2021 saw us venture to many of the smaller tourist attractions in each state which provided the local people an income to survive the lack of business due to lockdowns. The local state-based attractions will become a fixture on our holidays, and we have enjoyed exploring more places to visit locally.

I am always looking at ways to reduce ClubMates carbon footprint and wanted to make sure ClubMates could have a positive effect on our environment, therefore this brochure is smaller than previous brochures but packed with awesome holidays and information.

Our social media sites are the perfect place to view what is happening in the company on a daily or weekly basis and our social media sites along with the Website are the perfect place to keep updated and communicate with our passengers and families.

I am looking forward to meeting many of you on holidays and making sure your holiday is awesome. As always keep safe and thanks for your continued support.



# OUR COMPANY

*ClubMates Travel was founded in 1988, commencing as an outback Safari tour company, then quickly moved to supported travel for people with a disability. We then grew to a national company supporting all types of abilities all over the world with skilled, qualified, and enthusiastic support staff on each holiday. Clubmates is now a well-respected Travel agency and Tour operator, catering for a wide range of disabilities able to facilitate any type of holiday.*



ClubMates can facilitate almost any kind of holiday, whether you want to travel in Australia or abroad, as an individual or as part of a group (4-40 passengers). ClubMates Travel offers individualised holidays with specialised support structures, depending on the needs of the passengers and their destination. The level of customisation means that each and every holiday is uniquely arranged for you and/or your family. All the staff at ClubMates understand the importance of good quality care and support and how a lack of it can potentially ruin a holiday. We understand that all passengers want to visit the destination of their dreams, but it will never be a great holiday unless the right care and support is provided. ClubMates crew member's presence is to ensure passengers will have fun on their holidays and provide safety and comfort for the duration of their holiday. ClubMates staff are trained to administer medication, assist with budgeting, and if required provide more personalized care. Whatever is needed, everyone at ClubMates Travel ensures it is taken care of with dignity and skill. From the moment you call ClubMates to the last kilometre of the holiday, the company's 90 strong team of friendly travel agents and experienced support staff are there for you and your family. Our loyal customers that frequently use ClubMates to arrange and provide the support on holidays are testament to the incredibly thorough job done by all the staff.

**So, if you are ready for the holiday of a lifetime, fulfil your holiday dream now! Call us today, inquire through our online form, or fill in an online application.**



# OUR Values

Since 1988 ClubMates Travel has been working to a set of values that have emerged from within the company, a set of core values that we like to call 'The ClubMates Travel Code.' Our code governs the way we operate on a daily basis. It ensures that whatever the size of the company, whichever direction it takes, the ClubMates Travel team will always exude the qualities that have made ClubMates Travel the leading name in supported travel.

## Never be too proud to learn

- If we can learn from our mistakes as well as our successes, we will always be better than yesterday. We will always listen to our employees, passengers and their support network, to ensure we are the best possible company we can be.

## Believe in equality

- This important belief is one that has filtered down the organisation from Peter Negri at the top. We believe that if we can treat everyone, employees and passengers alike, with the respect we seek for ourselves, then great things can happen. No matter what level an employee is at within our company, no matter the ability of our passengers, we will always treat people with the respect they deserve.

## Work hard so others can play harder

- We realise that incredible, memorable holidays don't just happen, we work hard, and we don't mind doing it, because we know that the harder we work for our passengers, the more fun they are going to have on their holidays.

## Dream big

- We encourage it in our staff and in our passengers. The possibilities for ClubMates and everyone connected to our company are endless if we can continue to dream.

## No matter what happens enjoy the journey

- Life is not a dress rehearsal.

At ClubMates Travel we are extremely conscious about the footprints we leave behind as a global company, being aware and careful about how we impact the communities and the environment that we work within is something that we believe is important. With each person we take on holidays and many destinations we explore we strive to leave it a better place and in better condition than it was before we visited. We value Eco Tourism and work towards being a good corporate citizen.

ClubMates is striving to reduce our footprint on the environment and constantly working towards being environmentally friendly. All the team are looking for ways to reduce our environmental impact by using green energy and bio-degradable products.

ClubMates Travel supports the idea of a diverse and inclusive world and enjoy working with many diverse cultures. Over the years we have strived to create a workforce that is representative of the places we visit, and the communities we support. We believe it is of paramount importance that our company is represented by people of different genders, disabilities, ethnicities, cultural backgrounds, sexual orientations, and belief systems. ClubMates is always looking for people with different communication styles, problem solving skills, personal interests, and backgrounds to join our company. We recognise the importance of strong recruitment policies to ensure diversity is achieved. ClubMates wants its staff to feel like they belong and have a career path set out in front of them with the chance of progression within the company and the disability sector. Management believe that all work should be enjoyable and fulfilling for the entire team, and that everyone should feel like an important part of the company. Our inclusive attitude allows a level of service that is unrivalled in the supported holiday sector.



# MAKING A *Booking*



ClubMates Travel expects all of our staff to provide a fun filled holiday, instil confidence in our passengers, their families and friends, ensure that we deliver consistent, high-quality service which endures from the first phone call to the last leg of the holiday.

**These expectations have built a successful framework which has kept passengers coming back to us year after year.**

## BOOKING

- If we can learn from our mistakes as well as our successes, we will always be better than yesterday. We will always listen to our employees, passengers and their support network, to ensure we are the best possible company we can be.
- Agents will always speak to potential passengers or their support network and make suggestions when appropriate – taking into account the passenger's interests, wishes and disability in order to book each passenger on the best possible holiday.
- The ClubMates Travel website will always be kept up-to-date and is the main source of information.

## DURING THE HOLIDAY

- ✓ The ClubMates Travel Crew will try to keep each holiday as flexible as possible, if there's something the group wants to do, every effort will be made to facilitate that activity.
- ✓ All medication and spending money will be administered and distributed by qualified staff.
- ✓ Appropriate measures and precautions will be implemented to make every holiday as safe as possible.
- ✓ Each passenger will be treated with respect and dignity.
- ✓ Passengers will receive the support they require along with privacy and dignity.
- ✓ Every activity on the itinerary will be completed, unless exceptional circumstances occur.
- ✓ Accommodation will always be comfortable, safe and well located.
- ✓ Meals will be healthy and balanced with dietary requirements respected.

## AFTER THE HOLIDAY

- ✓ Passengers will be informed of the ClubMates Travel points they have accumulated which can be used for discounts on future holidays.
- ✓ Staff will respond to any commendations, complaints or requests within seven working days, and a resolution will be sought in each case.
- ✓ All feedback will be reviewed to identify how to improve the holiday.



# LET'S MAKE YOUR *Booking easy*

## • HOW DO I MAKE A BOOKING WITH CLUBMATES TRAVEL?

Call ClubMates Travel office and speak to one of our friendly consultants or send us a message via email or social media. Our consultants will then assist with holiday ideas, planning, and give you an indication of costs. Once this is done, we can send you a quote, if you choose to go ahead the booking can proceed.

## • WHERE CAN I EXPLORE WITH CLUBMATES TRAVEL?

We have taken passengers to some of the most amazing destinations, there is no place we don't travel, if requested by our passengers. We love giving choice and control to our passengers. By providing choice to our passengers and the right level of support the passenger can immerse themselves into the experience.

## • WHAT TYPE OF SUPPORTED TRAVEL CAN I EXPECT?

The wonderful thing about ClubMates is we have a range of staff from Nurses, trained support staff, tour leaders, and drivers who are all handpicked by the Management team. When you speak to our friendly staff, they will ask questions about your wants and needs to ascertain the level of support you want and require so the holiday is a success.

## • CAN I MEET WITH THE SUPPORT PERSON BEFORE THE HOLIDAY DEPARTS?

Absolutely, and with technology we can now provide both face to face or online meetings. We encourage a meet and greet with many passengers; it can reduce anxiety and make the whole experience more fulfilling.

## • ONCE I HAVE MADE THE BOOKING WHAT HAPPENS?

Once the booking is confirmed the ClubMates office will send a booking package.

## • DO I NEED TRAVEL INSURANCE?

No, but it is strongly advised to take it. We can organise this and include it on our invoice.

## • CAN I CHANGE OR CANCEL A BOOKING?

Yes, that's fine, but contact the ClubMates office to discuss any changes or cancellations. Refer to the terms and conditions for any cancellation fees.

## • HOW DO I PAY FOR THE HOLIDAY?

Payment can be made either via direct deposit, cheque, credit card, bank cheques or it can be paid off over several months to assist with budgeting. NDIS funds can be used and will be claimed after the holiday has returned.

## • CAN I MAKE PERIODICAL PAYMENTS?

Yes, if you would like to pay for your holiday periodically, we will provide you with a receipt each time a payment is made. This way, you will have an accurate way of tracking your outstanding balance. There are no extra costs to use the payment method.

## • WHEN DO YOU NEED TO MAKE THE FINAL PAYMENT?

Final payment needs to be received by the due date on the invoice. It can be 60, 90, 120 or 150 days before departure depending on the holiday destination & transport.

## • DO I RECEIVE ANY INFORMATION BETWEEN RECEIVING THE BOOKING PACKAGE AND DEPARTURE?

Yes, definitely. 1-4 weeks before departure you will receive a clothing list, meeting time and an updated itinerary along with the contact details of the tour leader.

## • DO I NEED A PASSPORT?

If travelling within your own country a passport is not required, but if you are travelling on a cruise ship or internationally yes you will need a passport with at least 6 months validity from your time of return.

## • WHO ORGANISES VISAS FOR INTERNATIONAL HOLIDAY?

ClubMates organise all visas for your holiday if they are required.

## • DO I NEED A VACCINATION?

It depends on the destination, and we always suggest that you contact your doctor for accurate information well in advance of the departure date.



## FREQUENTLY

# Asked Questions

### • IS CLUBMATES A REGISTERED NDIS PROVIDER?

Yes, we are a registered Provider in all states of Australia.

### • CAN I USE MY NDIS PACKAGE FOR HOLIDAYS?

There are various NDIS Line items you can utilise when enjoying your holiday.

### • HOW CAN I GET NDIS FUNDS ALLOCATED TO SUPPORT ME ON HOLIDAYS?

The easiest way to allow some extra money in your plan is to make holidays a goal, which in turn develops personal skills outside your home environment. But remember each plan is different and everyone gets assessed differently, so there are no guarantees.

### • DO YOU ONLY DO GROUP HOLIDAYS OR CAN I DO MY OWN HOLIDAY?

Our group holiday are for those who want to socialise and interact with other like-minded people, and enjoy the company of others while our individual holiday are for those who want a personalised experience.

### • WHO DOES CLUBMATES TRAVEL CATER FOR? WILL I BE ABLE TO JOIN A HOLIDAY WITH MY DISABILITY?

We take anyone that have support needs when enjoying a holiday, give us a call to discuss the level of support that you require.

### • DO I NEED A CERTAIN LEVEL OF HEALTH AND FITNESS TO PARTICIPATE?

All passengers should be healthy enough to participate in the holiday's planned activities. If you are unsure whether or not you reach the level of health required, please call us. We strive to accommodate everyone on our holidays.

### • I NEED INDIVIDUAL ONE-TO-ONE SUPPORT THROUGHOUT MY HOLIDAY. IS THIS POSSIBLE?

Yes. We can arrange anything from 1:1 to 1:5 support staff to passenger ratios.

### • I HAVE MY HEART SET ON A HOLIDAY, BUT IT ISN'T LISTED ON THE CLUBMATES TRAVEL WEBSITE. CAN YOU STILL HELP ME?

Definitely. On top of the holidays we have listed, we also offer tailor made holidays to suit you. If you call us with a dream holiday in mind, we can make it happen.

### • WHAT DO I HAVE TO TAKE CARE OF?

All passengers should have travel insurance, spending money for the holiday, passports and visas, and any personal items that they wish to take e.g. electronic devices, toiletries, enough clothing and footwear etc.

### • I LIKE THE SOUND OF ONE PARTICULAR HOLIDAY, BUT I KNOW SOME OF THE ACTIVITIES WON'T BE FOR ME. WHAT CAN I DO INSTEAD?

We always aim to make our holidays as flexible as possible. We always have an itinerary for each holiday, but if you can tell us in advance of your concerns or your wish to do another activity we will do our best to make it possible.

### • I DON'T LIVE ANYWHERE NEAR WHERE THE HOLIDAY DEPARTS FROM. WHAT CAN I DO?

ClubMates Travel can arrange transfers to the departure point either supported or unsupported.

### • WHERE WILL WE BE STAYING?

Usually, we use 3 to 4 star accommodation during the holiday.

### • HOW WILL I BE TRAVELLING?

This all depends on which holiday you choose and where you will be travelling to. ClubMates holidays use planes, cruise ships, wheelchair accessible luxury coaches, cars, accessible vans and 4WDs. If you would like to travel in another way, contact us to find out your options.

### • MY CIRCUMSTANCES HAVE CHANGED AND I HAVE TO CANCEL MY HOLIDAY. HOW DO I DO THIS?

All cancellations must be notified to ClubMates Travel in writing. See terms and conditions for information on cancellation fees.

### • WHAT IS INCLUDED IN THE PRICE OF THE HOLIDAY?

All main meals, accommodation, listed activities, and support crew, are included in the holiday fare. You only need to supply spending money on most holidays which can be added to your holiday invoice.

### • HOW MUCH LUGGAGE CAN I TAKE WITH ME ON HOLIDAY?

Passengers are allowed to take two bags on holiday with them: one suitcase that should not exceed 20kg, and backpack or smaller with maximum weight of 7kg.

### • I NEED ASSISTANCE WITH MY MEDICATION DURING MY HOLIDAY. CAN YOU HELP ME?

Yes, of course. Our support crew are trained to administer medication.



# Individual AND SMALL GROUP HOLIDAYS

If you love the idea of enjoying a personalised holiday to explore your chosen destination or you have a group of friends that may want to travel together, then let us all at ClubMates provide the expert advice so you get a magical holiday!! The many and varied destinations close to home or more extravagant destinations such as South Africa viewing the amazing wildlife in Kruger National Park, England with all the well known tourist attractions such as the Tower of London, or living it up in Disneyland, ClubMates can make the holiday safe and enjoyable. The skill and dedication in developing these holidays by the ClubMates team is second to none, we endeavour to make the parts of your holiday as smooth and easy as possible.



If you have a dream holiday in mind contact us at [info@clubmatestravel.com](mailto:info@clubmatestravel.com) or give us a call!!

## Let the Fun Begin!

### PERSONALISED HOLIDAYS

*Do you have a dream holiday, is it travelling locally in your own state, or do you want to experience the world?*

*Let the team at ClubMates provide the skills to make your dream a reality.*

We understand that you may need a ClubMates Support Team Member to accompany you on your holiday making it smooth and enjoyable. You may need extra assistance organising equipment, or assistance in arranging activities, let the ClubMates consultant make this easy for you.

## CLUBMATES TRAVEL CAN DO IT ALL FOR YOU!!!

We can organise your holiday from the time you make the first contact with ClubMates with your dream until we drop you back home.

*Just leave it to ClubMates Travel!*

## 23001 GOLD COAST NYE

- Have a blast with some show-stopping fun at Movie World on the Gold Coast.
- Time for a splashing adventure at fun-filled SeaWorld.
- Bring in the New Year with a fun night of dancing, singing, feasting & celebrating.
- Pick up some wonderful souvenirs & soak in the atmosphere at the iconic Carrara Markets.
- Meet all the furry & scaly residents of the David Fleay Wildlife Park.
- Learn some local history at the fascinating Gold Coast Museum.



DEPART	DATE	DAYS	TRANSPORT	PRICING						WHEELIES	STATE
				1:5	Members 1:5	1:4	1:3	1:2	1:1		
23001ADL	26 Dec 22 - 5 Jan 23	11	✈	\$8,229	\$8,159	\$10,039	\$10,945	\$11,850	\$14,401	POA	QLD
23001BNE	30 Dec 22 - 3 Jan 23	5	✈	\$4,049	\$4,015	\$4,940	\$5,385	\$5,831	\$7,086	POA	QLD
23001CBR	26 Dec 22 - 5 Jan 23	11	✈	\$8,331	\$8,260	\$10,164	\$11,080	\$11,997	\$14,579	POA	QLD
23001DRW	26 Dec 22 - 5 Jan 23	11	✈	\$9,124	\$9,046	\$11,131	\$12,135	\$13,139	\$15,967	POA	QLD
23001HBA	26 Dec 22 - 5 Jan 23	11	✈	\$8,273	\$8,203	\$10,093	\$11,003	\$11,913	\$14,478	POA	QLD
23001MEL	27 Dec 22 - 5 Jan 23	10	✈	\$6,960	\$6,901	\$8,491	\$9,257	\$10,022	\$12,180	POA	QLD
23001PER	26 Dec 22 - 5 Jan 23	11	✈	\$8,983	\$8,907	\$10,959	\$11,947	\$12,936	\$15,720	POA	QLD
23001SYD	28 Dec 22 - 4 Jan 23	8	✈	\$5,806	\$5,757	\$7,083	\$7,722	\$8,361	\$10,161	POA	QLD



## 23002 HOWZAT FOR NEW YEAR

- Howzat for an exciting day watching the test match at the MCG!
- Immerse yourself in the sights, sounds & tastes of the vibrant Queen Victoria Market.
- Sit back & relax whilst enjoying a cruise on the ferry from Melbourne to Williamstown.
- Bring in the New Year with a celebratory dinner & the spectacular Melbourne fireworks.
- Discover handmade, artisan crafts and local food products at Melbourne's only outdoor market - St Kilda Market.
- Explore the underwater world of the Melbourne Aquarium.
- Enjoy a delectable dining experience at the Crown Casino & watch the fireballs lighting up the sky.



DEPART	DATE	DAYS	TRANSPORT	PRICING						WHEELIES	STATE
				1:5	Members 1:5	1:4	1:3	1:2	1:1		
23002ADL	28 Dec 22 - 2 Jan 23	6	✈	\$5,357	\$5,311	\$6,536	\$7,125	\$7,714	\$9,375	POA	VIC
23002BNE	28 Dec 22 - 2 Jan 23	6	✈	\$5,589	\$5,541	\$6,819	\$7,433	\$8,048	\$9,781	POA	VIC
23002CBR	28 Dec 22 - 2 Jan 23	6	✈	\$5,444	\$5,398	\$6,642	\$7,241	\$7,839	\$9,527	POA	VIC
23002DRW	28 Dec 22 - 2 Jan 23	6	✈	\$6,849	\$6,791	\$8,356	\$9,109	\$9,863	\$11,986	POA	VIC
23002HBA	28 Dec 22 - 2 Jan 23	6	✈	\$5,509	\$5,462	\$6,721	\$7,327	\$7,933	\$9,641	POA	VIC
23002MEL	28 Dec 22 - 2 Jan 23	6	✈	\$4,762	\$4,722	\$5,810	\$6,333	\$6,857	\$8,334	POA	VIC
23002PER	28 Dec 22 - 2 Jan 23	6	✈	\$7,003	\$6,943	\$8,544	\$9,314	\$10,084	\$12,255	POA	VIC
23002SYD	28 Dec 22 - 2 Jan 23	6	✈	\$5,429	\$5,383	\$6,623	\$7,221	\$7,818	\$9,501	POA	VIC

## 23003 HARBOUR NEW YEAR

- Wander through the tranquil setting of the Chinese Gardens of Friendship & enjoy a wonderful lunch in Darling Harbour.
- Soak up the bustling vibe of the iconic Paddy's Markets & search for the perfect souvenirs.
- Enjoy a star-studded journey at Madame Tussauds Sydney where a photo opportunity awaits around every corner.
- Bringing in the New Year viewing the fireworks over Sydney Harbour is truly a spectacular thing to remember.
- Start the new year right with a fun filled morning at the famous Sydney Rocks Market.
- Meet the lovely residents of the Symbio Wildlife Park & enjoy the daily presentations.



DEPART	DATE	DAYS	TRANSPORT	PRICING						WHEELIES	STATE
				1:5	Members 1:5	1:4	1:3	1:2	1:1		
23003ADL	29 Dec 22 - 2 Jan 23	5	✈	\$4,459	\$4,421	\$5,440	\$5,930	\$6,421	\$7,803	POA	NSW
23003BNE	29 Dec 22 - 2 Jan 23	5	✈	\$4,488	\$4,450	\$5,475	\$5,969	\$6,463	\$7,854	POA	NSW
23003CBR	29 Dec 22 - 2 Jan 23	5	✈	\$4,590	\$4,551	\$5,600	\$6,105	\$6,610	\$8,033	POA	NSW
23003DRW	27 Dec 22 - 3 Jan 23	8	✈	\$7,707	\$7,641	\$9,403	\$10,250	\$11,098	\$13,487	POA	NSW
23003HBA	27 Dec 22 - 3 Jan 23	8	✈	\$6,856	\$6,798	\$8,364	\$9,118	\$9,873	\$11,998	POA	NSW
23003MEL	28 Dec 22 - 3 Jan 23	7	✈	\$5,544	\$5,497	\$6,764	\$7,374	\$7,983	\$9,702	POA	NSW
23003PER	27 Dec 22 - 3 Jan 23	8	✈	\$7,567	\$7,503	\$9,232	\$10,064	\$10,896	\$13,242	POA	NSW
23003SYD	29 Dec 22 - 2 Jan 23	5	✈	\$3,618	\$3,587	\$4,414	\$4,812	\$5,210	\$6,332	POA	NSW







## 23007 HIGH COUNTRY 4WD DRIVING

- Relax around the campfire in the crisp High-Country air & admire the clear, star-studded sky.
- Wander through legendary Craig's Hut, famous from The Man from Snowy River.
- Cook up some hearty bush tucker over the fire.
- Navigate the 4WD tracks throughout the High Country.
- Explore the many bush huts used by the cattle musters.
- Swim in the cool fresh waters of the river.



DEPART	DATE	DAYS	TRANSPORT	PRICING						WHEELIES	STATE
				1:5	Members 1:5	1:4	1:3	1:2	1:1		
23007ADL	3 Feb 23 - 7 Feb 23	5	✂	\$3,886	\$3,853	\$4,741	\$5,168	\$5,596	\$6,801	POA	VIC
23007BNE	3 Feb 23 - 7 Feb 23	5	✂	\$4,046	\$4,012	\$4,936	\$5,381	\$5,826	\$7,081	POA	VIC
23007CBR	3 Feb 23 - 7 Feb 23	5	✂	\$3,872	\$3,839	\$4,724	\$5,150	\$5,576	\$6,776	POA	VIC
23007DRW	2 Feb 23 - 7 Feb 23	6	✂	\$5,547	\$5,500	\$6,767	\$7,378	\$7,988	\$9,707	POA	VIC
23007HBA	3 Feb 23 - 7 Feb 23	5	✂	\$3,828	\$3,795	\$4,670	\$5,091	\$5,512	\$6,699	POA	VIC
23007MEL	3 Feb 23 - 7 Feb 23	5	✂	\$3,306	\$3,278	\$4,033	\$4,397	\$4,761	\$5,786	POA	VIC
23007PER	2 Feb 23 - 7 Feb 23	6	✂	\$5,242	\$5,197	\$6,395	\$6,972	\$7,548	\$9,174	POA	VIC
23007SYD	3 Feb 23 - 7 Feb 23	5	✂	\$3,792	\$3,760	\$4,626	\$5,043	\$5,460	\$6,636	POA	VIC

## 23011 AVALON AIR SHOW

- Feel the roar from above with a showcase of fighter jets, bombers, attack helicopters & more as they put on a breathtaking show in the sky at the Avalon Air Show.
- Wander through the many exhibits to admire the historic & classic aircraft on display at Avalon.
- Explore the wonderful collection of aircraft & aviation artifacts housed at the Point Cook RAAF Base.
- Learn the history of the wool industry at the National Wool Museum dating back to the First Fleet in 1788.
- Appreciate an authentic cultural experience at the Narana Aboriginal and Cultural Centre.
- Enjoy a lovely lunch at Café Narana, sample dishes infused with delicious native ingredients.



DEPART	DATE	DAYS	TRANSPORT	PRICING						WHEELIES	STATE
				1:5	Members 1:5	1:4	1:3	1:2	1:1		
23011ADL	2 Mar 23 - 6 Mar 23	5	✂	\$4,249	\$4,213	\$5,184	\$5,651	\$6,119	\$7,436	POA	VIC
23011BNE	2 Mar 23 - 6 Mar 23	5	✂	\$4,408	\$4,371	\$5,378	\$5,863	\$6,348	\$7,714	POA	VIC
23011CBR	2 Mar 23 - 6 Mar 23	5	✂	\$4,234	\$4,198	\$5,165	\$5,631	\$6,097	\$7,410	POA	VIC
23011DRW	1 Mar 23 - 6 Mar 23	6	✂	\$5,909	\$5,859	\$7,209	\$7,859	\$8,509	\$10,341	POA	VIC
23011HBA	2 Mar 23 - 6 Mar 23	5	✂	\$4,191	\$4,155	\$5,113	\$5,574	\$6,035	\$7,334	POA	VIC
23011MEL	2 Mar 23 - 6 Mar 23	5	✂	\$3,669	\$3,638	\$4,476	\$4,880	\$5,283	\$6,421	POA	VIC
23011PER	1 Mar 23 - 6 Mar 23	6	✂	\$5,605	\$5,557	\$6,838	\$7,455	\$8,071	\$9,809	POA	VIC
23011SYD	2 Mar 23 - 6 Mar 23	5	✂	\$4,155	\$4,120	\$5,069	\$5,526	\$5,983	\$7,271	POA	VIC



## 23013 PENGUINS ON THE ISLAND

- Stroll through the fragrant cottage gardens, milk a cow and pat the farm animals on Churchill Island.
- Sit back and relax as we enjoy a seal watching cruise and learn the history of Phillip Island.
- Close your eyes and just relax and breathe deeply as your muscles are pampered with a massage.
- Look at the wall of chocolate cascading over a mini waterfall and sample some chocolates.
- Pat a koala and hand feed an albino kangaroo at Maru Koala and Animal Park.
- Watch as the little penguins return to their burrows after a day of fishing.



DEPART	DATE	DAYS	TRANSPORT	PRICING						WHEELIES	STATE
				1:5	Members 1:5	1:4	1:3	1:2	1:1		
23013ADL	16 Mar 23 - 20 Mar 23	5	✂	\$4,321	\$4,284	\$5,272	\$5,747	\$6,222	\$7,562	POA	VIC
23013BNE	16 Mar 23 - 20 Mar 23	5	✂	\$4,481	\$4,443	\$5,467	\$5,960	\$6,453	\$7,842	POA	VIC
23013CBR	16 Mar 23 - 20 Mar 23	5	✂	\$4,307	\$4,270	\$5,255	\$5,728	\$6,202	\$7,537	POA	VIC
23013DRW	15 Mar 23 - 20 Mar 23	6	✂	\$5,982	\$5,931	\$7,298	\$7,956	\$8,614	\$10,469	POA	VIC
23013HBA	16 Mar 23 - 20 Mar 23	5	✂	\$4,263	\$4,227	\$5,201	\$5,670	\$6,139	\$7,460	POA	VIC
23013MEL	16 Mar 23 - 20 Mar 23	5	✂	\$3,741	\$3,709	\$4,564	\$4,976	\$5,387	\$6,547	POA	VIC
23013PER	15 Mar 23 - 20 Mar 23	6	✂	\$5,677	\$5,629	\$6,926	\$7,550	\$8,175	\$9,935	POA	VIC
23013SYD	16 Mar 23 - 20 Mar 23	5	✂	\$4,227	\$4,191	\$5,157	\$5,622	\$6,087	\$7,397	POA	VIC

## 23017 HAPPY EASTER MELBOURNE

- Enjoy some underwater entertainment at the Melbourne Aquarium.
- Meet the furry locals at Gumbuya World & enjoy music, food & Indigenous culture.
- Prepare for a day of fun at the Melbourne Easter show with animals, shows, music & more.
- Happy Easter, begin the day with an Easter Egg hunt, followed by live music, dancing, mazes & mini golf.
- Take a scenic steam train journey from Moorooduc to Mornington, look out for Easter Bunny!
- Relax with a massage & after some fun retail therapy.



DEPART	DATE	DAYS	TRANSPORT	PRICING						WHEELIES	STATE
				1:5	Members 1:5	1:4	1:3	1:2	1:1		
23017ADL	6 April 23 - 10 April 23	5	✈	\$4,256	\$4,220	\$5,192	\$5,660	\$6,129	\$7,448	POA	VIC
23017BNE	6 April 23 - 10 April 23	5	✈	\$4,416	\$4,378	\$5,388	\$5,873	\$6,359	\$7,728	POA	VIC
23017CBR	6 April 23 - 10 April 23	5	✈	\$4,242	\$4,206	\$5,175	\$5,642	\$6,108	\$7,424	POA	VIC
23017DRW	5 April 23 - 10 April 23	6	✈	\$5,916	\$5,866	\$7,218	\$7,868	\$8,519	\$10,353	POA	VIC
23017HBA	6 April 23 - 10 April 23	5	✈	\$4,198	\$4,162	\$5,122	\$5,583	\$6,045	\$7,347	POA	VIC
23017MEL	6 April 23 - 10 April 23	5	✈	\$3,676	\$3,645	\$4,485	\$4,889	\$5,293	\$6,433	POA	VIC
23017PER	5 April 23 - 10 April 23	6	✈	\$5,612	\$5,564	\$6,847	\$7,464	\$8,081	\$9,821	POA	VIC
23017SYD	6 April 23 - 10 April 23	5	✈	\$4,162	\$4,127	\$5,078	\$5,535	\$5,993	\$7,284	POA	VIC



## 23023 MELBOURNE'S AFL & MORE!

- Explore one of the world's most iconic stadiums with a behind-the-scenes MCG tour
- Join the roaring crowd on game day as we cheer on the teams fighting it out for a win.
- Trawl through DFO, a shopper's paradise for all your favorite team merchandise.
- Enjoy a wonderful day at the Melbourne Zoo, meet the animals & relax with a picnic in the grounds.
- Soak in the vibe of market day at the quirky St. Kilda markets & the famous Queen
- Sit back & relax as we cruise the Yarra River, enjoying the well-known sights along the way.



DEPART	DATE	DAYS	TRANSPORT	PRICING						WHEELIES	STATE
				1:5	Members 1:5	1:4	1:3	1:2	1:1		
23023ADL	11 May 23 - 15 May 23	5	✈	\$4,024	\$3,990	\$4,909	\$5,352	\$5,795	\$7,042	POA	VIC
23023BNE	11 May 23 - 15 May 23	5	✈	\$4,184	\$4,148	\$5,104	\$5,565	\$6,025	\$7,322	POA	VIC
23023CBR	11 May 23 - 15 May 23	5	✈	\$4,010	\$3,976	\$4,892	\$5,333	\$5,774	\$7,018	POA	VIC
23023DRW	10 May 23 - 15 May 23	6	✈	\$5,684	\$5,636	\$6,934	\$7,560	\$8,185	\$9,947	POA	VIC
23023HBA	11 May 23 - 15 May 23	5	✈	\$3,966	\$3,932	\$4,839	\$5,275	\$5,711	\$6,941	POA	VIC
23023MEL	11 May 23 - 15 May 23	5	✈	\$3,444	\$3,415	\$4,202	\$4,581	\$4,959	\$6,027	POA	VIC
23023PER	10 May 23 - 15 May 23	6	✈	\$5,380	\$5,334	\$6,564	\$7,155	\$7,747	\$9,415	POA	VIC
23023SYD	11 May 23 - 15 May 23	5	✈	\$3,930	\$3,897	\$4,795	\$5,227	\$5,659	\$6,878	POA	VIC

Updated pricelist are on page 29 to 36.

## 23025 WARRNAMBOOL WONDERS

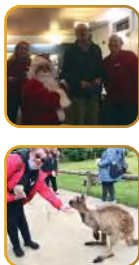
- Sit back & enjoy the breathtaking views as we wind along The Great Ocean Road towards Warrnambool.
- Admire the stunning limestone structures & the moody Southern Ocean from the Twelve Apostles National Park.
- Meet the residents of Tower Hill- Kangaroos, Emus, Koalas & more and stop by the Worn Gundidj Visitor Centre.
- Step back in time with the Port Fairy Historic Town Walk, so much to discover in this quaint port town.
- Explore the sometimes-tragic maritime history at Flagstaff Hill, roam the cobblestone streets & historic buildings.
- Relax & unwind with an indulgent massage session & a soak in the Deep Blue Hot Springs.



DEPART	DATE	DAYS	TRANSPORT	PRICING						WHEELIES	STATE
				1:5	Members 1:5	1:4	1:3	1:2	1:1		
23025ADL	26 May 23 - 30 May 23	5	✈	\$3,959	\$3,925	\$4,830	\$5,265	\$5,701	\$6,928	POA	VIC
23025BNE	26 May 23 - 30 May 23	5	✈	\$4,118	\$4,083	\$5,024	\$5,477	\$5,930	\$7,207	POA	VIC
23025CBR	26 May 23 - 30 May 23	5	✈	\$3,944	\$3,910	\$4,812	\$5,246	\$5,679	\$6,902	POA	VIC
23025DRW	25 May 23 - 30 May 23	6	✈	\$5,619	\$5,571	\$6,855	\$7,473	\$8,091	\$9,833	POA	VIC
23025HBA	26 May 23 - 30 May 23	5	✈	\$3,901	\$3,868	\$4,759	\$5,188	\$5,617	\$6,827	POA	VIC
23025MEL	26 May 23 - 30 May 23	5	✈	\$3,379	\$3,350	\$4,122	\$4,494	\$4,866	\$5,913	POA	VIC
23025PER	25 May 23 - 30 May 23	6	✈	\$5,315	\$5,270	\$6,484	\$7,069	\$7,654	\$9,301	POA	VIC
23025SYD	26 May 23 - 30 May 23	5	✈	\$3,865	\$3,832	\$4,715	\$5,140	\$5,566	\$6,764	POA	VIC

Updated pricelist are on page 29 to 36.





## 23035 VALLEY XMAS IN JULY

- Enjoy a mid-year Xmas celebration with a delightful dinner & Kris Kringle gifts.
- Wander through the peaceful bush setting of Healesville Sanctuary & engage with all creatures great & small
- Don't let the big one get away as we try our hand at some Trout & Salmon fishing.
- Indulge in some finest dairy products at the Yarra Valley dairy.
- Toot toot- all aboard as we roll through the hills on the iconic Puffing Billy steam train.
- Sample the delicious hand-made treats at the Yarra Valley Chocolaterie.



DEPART	DATE	DAYS	TRANSPORT	PRICING						WHEELIES	STATE
				1:5	Members 1:5	1:4	1:3	1:2	1:1		
23035ADL	24 July 23 - 28 July 23	5	✈	\$4,358	\$4,321	\$5,317	\$5,796	\$6,276	\$7,627	POA	VIC
23035BNE	24 July 23 - 28 July 23	5	✈	\$4,677	\$4,637	\$5,706	\$6,220	\$6,735	\$8,185	POA	VIC
23035CBR	24 July 23 - 28 July 23	5	✈	\$4,459	\$4,421	\$5,440	\$5,930	\$6,421	\$7,803	POA	VIC
23035DRW	23 July 23 - 28 July 23	6	✈	\$6,018	\$5,967	\$7,342	\$8,004	\$8,666	\$10,532	POA	VIC
23035HBA	24 July 23 - 28 July 23	5	✈	\$4,459	\$4,421	\$5,440	\$5,930	\$6,421	\$7,803	POA	VIC
23035MEL	24 July 23 - 28 July 23	5	✈	\$3,778	\$3,746	\$4,609	\$5,025	\$5,440	\$6,612	POA	VIC
23035PER	23 July 23 - 28 July 23	6	✈	\$5,713	\$5,664	\$6,970	\$7,598	\$8,227	\$9,998	POA	VIC
23035SYD	24 July 23 - 28 July 23	5	✈	\$4,416	\$4,378	\$5,388	\$5,873	\$6,359	\$7,728	POA	VIC

Updated pricelist are on page 29 to 36.

## 23037 AROUND THE BAY

- Take in the spectacular views across the Peninsula from the scenic Arthur's Seat.
- Enjoy the Ferry from Sorrento to Queenscliff & a visit to the Queenscliff Maritime Museum.
- History awaits at the Fort Queenscliff Museum, contained within the unique walls of a fort.
- Join in the history, culture & stories as we visit the Narana Aboriginal Cultural Centre & have a go at throwing a boomerang.
- Trawl through the many stalls for treasures at the Belmont Market, Geelong's biggest 'garage sale'.
- Head 'Off on Safari' & across the open plains with a visit to Werribee Zoo.



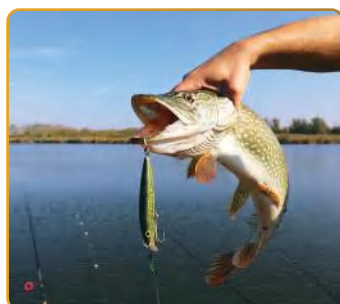
DEPART	DATE	DAYS	TRANSPORT	PRICING						WHEELIES	STATE
				1:5	Members 1:5	1:4	1:3	1:2	1:1		
23037ADL	3 Aug 23 - 7 Aug 23	5	✈	\$4,401	\$4,364	\$5,369	\$5,853	\$6,337	\$7,702	POA	VIC
23037BNE	3 Aug 23 - 7 Aug 23	5	✈	\$4,720	\$4,680	\$5,758	\$6,278	\$6,797	\$8,260	POA	VIC
23037CBR	3 Aug 23 - 7 Aug 23	5	✈	\$4,503	\$4,465	\$5,494	\$5,989	\$6,484	\$7,880	POA	VIC
23037DRW	2 Aug 23 - 7 Aug 23	6	✈	\$6,061	\$6,009	\$7,394	\$8,061	\$8,728	\$10,607	POA	VIC
23037HBA	3 Aug 23 - 7 Aug 23	5	✈	\$4,503	\$4,465	\$5,494	\$5,989	\$6,484	\$7,880	POA	VIC
23037MEL	3 Aug 23 - 7 Aug 23	5	✈	\$3,821	\$3,789	\$4,662	\$5,082	\$5,502	\$6,687	POA	VIC
23037PER	2 Aug 23 - 7 Aug 23	6	✈	\$5,757	\$5,708	\$7,024	\$7,657	\$8,290	\$10,075	POA	VIC
23037SYD	3 Aug 23 - 7 Aug 23	5	✈	\$4,459	\$4,421	\$5,440	\$5,930	\$6,421	\$7,803	POA	VIC

Updated pricelist are on page 29 to 36.



## 23044 LAKES FISHING & DOLPHINS

- Stroll through the quaint township of beautiful Lakes Entrance.
- Enjoy a wonderful sightseeing cruise through the myriad of lake systems that make up Lakes Entrance.
- Find your competitive side at the fun & quirky Footbridge Mini-Golf centre.
- Wander through the breathtaking underworld of Buchan Caves.
- Take in the stunning views of the 90-mile beach upon camel-back.
- Explore the many displays at the Griffiths Shell & Marine Museum.



DEPART	DATE	DAYS	TRANSPORT	PRICING						WHEELIES	STATE
				1:5	Members 1:5	1:4	1:3	1:2	1:1		
23044ADL	18 Sep 23 - 24 Sep 23	7	✈	\$5,785	\$5,736	\$7,058	\$7,694	\$8,330	\$10,124	POA	VIC
23044BNE	18 Sep 23 - 24 Sep 23	7	✈	\$6,104	\$6,052	\$7,447	\$8,118	\$8,790	\$10,682	POA	VIC
23044CBR	18 Sep 23 - 24 Sep 23	7	✈	\$5,886	\$5,836	\$7,181	\$7,828	\$8,476	\$10,301	POA	VIC
23044DRW	18 Sep 23 - 24 Sep 23	7	✈	\$6,640	\$6,584	\$8,101	\$8,831	\$9,562	\$11,620	POA	VIC
23044HBA	18 Sep 23 - 24 Sep 23	7	✈	\$5,886	\$5,836	\$7,181	\$7,828	\$8,476	\$10,301	POA	VIC
23044MEL	19 Sep 23 - 24 Sep 23	6	✈	\$4,400	\$4,363	\$5,368	\$5,852	\$6,336	\$7,700	POA	VIC
23044PER	18 Sep 23 - 24 Sep 23	7	✈	\$6,336	\$6,282	\$7,730	\$8,427	\$9,124	\$11,088	POA	VIC
23044SYD	18 Sep 23 - 24 Sep 23	7	✈	\$5,843	\$5,793	\$7,128	\$7,771	\$8,414	\$10,225	POA	VIC

Updated pricelist are on page 29 to 36.

## 23046 MILDURA-WENTWORTH COUNTRY MUSIC FESTIVAL

- Sit back & relax on a lovely paddle steamer cruise through Mildura's Lock 11.
- Admire the magnificent display of Holden vehicles at the Holden Motor Museum.
- Hold onto your hats & fasten your dancing shoes as we dance the day & night away at the Mildura Country Music Festival.
- Relax at the breathtaking Australian Inland Botanic Gardens & explore the beautiful scenery on offer.
- Head out into the fresh air at Benetook's Farm to see the famous Benetook Chooks, pick some fresh strawberries, get lost in the Magic Maze & wander through the farm store.
- Be bedazzled at Woodsies Gem Shop, offering a stunning display of precious stones & artifacts and Aladdins Cave and the delightful garden maze.



DEPART	DATE	DAYS	TRANSPORT	PRICING						WHEELIES	STATE
				1:5	Members 1:5	1:4	1:3	1:2	1:1		
23046ADL	26 Sep 23 - 3 Oct 23	7	✂	\$6,114	\$6,062	\$7,459	\$8,132	\$8,804	\$10,700	POA	VIC
23046BNE	26 Sep 23 - 3 Oct 23	7	✂	\$6,563	\$6,507	\$8,007	\$8,729	\$9,451	\$11,485	POA	VIC
23046CBR	26 Sep 23 - 3 Oct 23	7	✂	\$6,346	\$6,292	\$7,742	\$8,440	\$9,138	\$11,106	POA	VIC
23046DRW	26 Sep 23 - 3 Oct 23	7	✂	\$7,100	\$7,040	\$8,662	\$9,443	\$10,224	\$12,425	POA	VIC
23046HBA	26 Sep 23 - 3 Oct 23	7	✂	\$6,346	\$6,292	\$7,742	\$8,440	\$9,138	\$11,106	POA	VIC
23047MEL	27 Sep 23 - 3 Oct 23	6	✂	\$4,859	\$4,818	\$5,928	\$6,462	\$6,997	\$8,503	POA	VIC
23046PER	26 Sep 23 - 3 Oct 23	7	✂	\$6,795	\$6,737	\$8,290	\$9,037	\$9,785	\$11,891	POA	VIC
23046SYD	26 Sep 23 - 3 Oct 23	7	✂	\$6,302	\$6,248	\$7,688	\$8,382	\$9,075	\$11,029	POA	VIC

Updated pricelist are on page 29 to 36.



## 23050 DELIGHTFUL DANDENONGS

- Breathe in the fresh mountain air of the stunning Dandenong Ranges
- Milk a cow, hand feed the animals & watch the cattle dogs at work at Chesterfield Farm.
- Relax with a pampering massage
- Take in the beauty of the stunning floral displays of the Ranges.
- Enjoy an unobstructed view across Melbourne from the SkyHigh observatory, lose yourself in the maze.
- Wander through Geppetto's Workshop & admire the wonderful marionettes, dolls, bears & puppets.



DEPART	DATE	DAYS	TRANSPORT	PRICING						WHEELIES	STATE
				1:5	Members 1:5	1:4	1:3	1:2	1:1		
23050ADL	17 Oct 23 - 20 Oct 23	4	✂	\$3,872	\$3,839	\$4,724	\$5,150	\$5,576	\$6,776	POA	VIC
23050BNE	17 Oct 23 - 20 Oct 23	4	✂	\$4,191	\$4,155	\$5,113	\$5,574	\$6,035	\$7,334	POA	VIC
23050CBR	17 Oct 23 - 20 Oct 23	4	✂	\$3,973	\$3,939	\$4,847	\$5,284	\$5,721	\$6,953	POA	VIC
23050DRW	16 Oct 23 - 20 Oct 23	5	✂	\$5,532	\$5,485	\$6,749	\$7,358	\$7,966	\$9,681	POA	VIC
23050HBA	17 Oct 23 - 20 Oct 23	4	✂	\$3,973	\$3,939	\$4,847	\$5,284	\$5,721	\$6,953	POA	VIC
23050MEL	17 Oct 23 - 20 Oct 23	4	✂	\$3,292	\$3,264	\$4,016	\$4,378	\$4,740	\$5,761	POA	VIC
23050PER	16 Oct 23 - 20 Oct 23	5	✂	\$5,228	\$5,184	\$6,378	\$6,953	\$7,528	\$9,149	POA	VIC
23050SYD	17 Oct 23 - 20 Oct 23	4	✂	\$3,930	\$3,897	\$4,795	\$5,227	\$5,659	\$6,878	POA	VIC

Updated pricelist are on page 29 to 36.

## 23058 PERFECT PENINSULA

- Hand feed Kangaroos, cuddle Kolalas & pat Pythons at the lovely Moonlit Sanctuary.
- Get the best views across the Peninsula from the Arthur's Seat air gondola.
- Let your worries float away at the relaxing & tranquil Peninsula Hot Springs.
- Create your own delicious truffles & chocolate bar at the Mornington Peninsula Chocolaterie & ice creamery.
- Join an unforgettable experience with a dolphin & seal swim cruise.
- Get 'lost' at the amazing Ashcombe Maze, home to Australia's largest & oldest hedge maze.



DEPART	DATE	DAYS	TRANSPORT	PRICING						WHEELIES	STATE
				1:5	Members 1:5	1:4	1:3	1:2	1:1		
23058ADL	2 Dec 23 - 6 Dec 23	5	✂	\$4,698	\$4,658	\$5,732	\$6,248	\$6,765	\$8,222	POA	VIC
23058BNE	2 Dec 23 - 6 Dec 23	5	✂	\$5,017	\$4,974	\$6,121	\$6,673	\$7,224	\$8,780	POA	VIC
23058CBR	2 Dec 23 - 6 Dec 23	5	✂	\$4,800	\$4,759	\$5,856	\$6,384	\$6,912	\$8,400	POA	VIC
23058DRW	1 Dec 23 - 6 Dec 23	6	✂	\$6,359	\$6,305	\$7,758	\$8,457	\$9,157	\$11,128	POA	VIC
23058HBA	2 Dec 23 - 6 Dec 23	5	✂	\$4,800	\$4,759	\$5,856	\$6,384	\$6,912	\$8,400	POA	VIC
23058MEL	2 Dec 23 - 6 Dec 23	5	✂	\$4,118	\$4,083	\$5,024	\$5,477	\$5,930	\$7,207	POA	VIC
23058PER	1 Dec 23 - 6 Dec 23	6	✂	\$6,054	\$6,003	\$7,386	\$8,052	\$8,718	\$10,595	POA	VIC
23058SYD	2 Dec 23 - 6 Dec 23	5	✂	\$4,756	\$4,716	\$5,802	\$6,325	\$6,849	\$8,323	POA	VIC

Updated pricelist are on page 29 to 36.







## 23004 ELVIS FESTIVAL 23

- Get ready to Shake, Rattle & Roll as we head to the annual Elvis Festival in Parkes.
- Enjoy the fun of the street parade full of Elvis & Pricilla impersonators, classic cars & vibrant, bright floats.
- Sing & dance along to the many Elvis concerts playing throughout the festival.
- Wander the impressive collection of Elvis artifacts & 'Walk A Mile in my Shoes' – A Day in the life of Elvis Presley' at King's Castle.
- Admire the impressive collection of classic motor vehicles owed by the Parkes Antique Motor Club.
- Explore 'The Dish' & try out the telescope on our visit to the Parkes Observatory.



DEPART	DATE	DAYS	TRANSPORT	PRICING						WHEELIES	STATE
				1:5	Members 1:5	1:4	1:3	1:2	1:1		
23004ADL	3 Jan 23 – 10 Jan 23	8	✈	\$5,331	\$5,286	\$6,504	\$7,090	\$7,677	\$9,329	POA	NSW
23004BNE	3 Jan 23 – 10 Jan 23	8	✈	\$5,534	\$5,487	\$6,751	\$7,360	\$7,969	\$9,685	POA	NSW
23004CBR	3 Jan 23 – 10 Jan 23	8	✈	\$5,447	\$5,401	\$6,645	\$7,245	\$7,844	\$9,532	POA	NSW
23004DRW	3 Jan 23 – 10 Jan 23	8	✈	\$6,288	\$6,235	\$7,671	\$8,363	\$9,055	\$11,004	POA	NSW
23004HBA	3 Jan 23 – 10 Jan 23	8	✈	\$5,374	\$5,328	\$6,556	\$7,147	\$7,739	\$9,405	POA	NSW
23004MEL	4 Jan 23 – 10 Jan 23	7	✈	\$4,417	\$4,379	\$5,389	\$5,875	\$6,360	\$7,730	POA	NSW
23004PER	3 Jan 23 – 10 Jan 23	8	✈	\$5,983	\$5,932	\$7,299	\$7,957	\$8,616	\$10,470	POA	NSW
23004SYD	4 Jan 23 – 10 Jan 23	7	✈	\$4,794	\$4,753	\$5,849	\$6,376	\$6,903	\$8,390	POA	NSW

## 23005 TAMWORTH MUSIC FESTIVAL 23

- Enjoy a road trip to Tamworth with all our favourite country music hits playing along the way.
- Sit back & relax or dance until your heart is content as we join the award-winning artists highlighting this year's Tamworth Country Music Festival.
- Visit the Big Golden Guitar Tourist Centre & explore the Collectors Museum & 'The Galaxy of the Stars' Wax Museum.
- Dance & sing along with the many buskers dotted throughout Peel Street.
- Take in some history with a stop at Nundle Woollen Mill & Wombramurra Woolshed.
- For all things country music, a visit to The Australian Country Music Hall of Fame.



DEPART	DATE	DAYS	TRANSPORT	PRICING						WHEELIES	STATE
				1:5	Members 1:5	1:4	1:3	1:2	1:1		
23005ADL	11 Jan 23 – 19 Jan 23	9	✈	\$6,307	\$6,253	\$7,695	\$8,388	\$9,082	\$11,037	POA	VIC
23005BNE	11 Jan 23 – 19 Jan 23	9	✈	\$6,510	\$6,455	\$7,942	\$8,658	\$9,374	\$11,393	POA	VIC
23005CBR	11 Jan 23 – 19 Jan 23	9	✈	\$6,423	\$6,368	\$7,836	\$8,543	\$9,249	\$11,240	POA	VIC
23005DRW	11 Jan 23 – 19 Jan 23	9	✈	\$7,264	\$7,202	\$8,862	\$9,661	\$10,460	\$12,712	POA	VIC
23005HBA	11 Jan 23 – 19 Jan 23	9	✈	\$6,350	\$6,296	\$7,747	\$8,446	\$9,144	\$11,113	POA	VIC
23005MEL	12 Jan 23 – 19 Jan 23	8	✈	\$5,023	\$4,980	\$6,128	\$6,681	\$7,233	\$8,790	POA	VIC
23005PER	11 Jan 23 – 19 Jan 23	9	✈	\$6,959	\$6,900	\$8,490	\$9,255	\$10,021	\$12,178	POA	VIC
23005SYD	11 Jan 23 – 19 Jan 23	8	✈	\$5,400	\$5,354	\$6,588	\$7,182	\$7,776	\$9,450	POA	VIC



## 23012 CAMPING ON COCKATOO ISLAND

- Enjoy two fun nights of camping on Cockatoo Island.
- Relax with a picnic while boat watching and taking in the scenery at Woolwich Dock and Parklands.
- Experience the famous rum from Brix Distillery with a tour around the distillery.
- Discover the amazing collection of Aboriginal works, antiques and science specimens at the Chau Chak Wing Museum.
- Take a relaxing walk around Darling Harbour, enjoy an afternoon tea & watch the world go by.



DEPART	DATE	DAYS	TRANSPORT	PRICING						WHEELIES	STATE
				1:5	Members 1:5	1:4	1:3	1:2	1:1		
23012ADL	7 Mar 23 – 14 Mar 23	8	✈	\$6,794	\$6,736	\$8,289	\$9,036	\$9,783	\$11,890	POA	NSW
23012BNE	9 Mar 23 – 13 Mar 23	5	✈	\$4,553	\$4,514	\$5,555	\$6,055	\$6,556	\$7,968	POA	NSW
23012CBR	9 Mar 23 – 13 Mar 23	5	✈	\$4,597	\$4,558	\$5,608	\$6,114	\$6,620	\$8,045	POA	NSW
23012DRW	7 Mar 23 – 14 Mar 23	8	✈	\$7,780	\$7,714	\$9,492	\$10,347	\$11,203	\$13,615	POA	NSW
23012HBA	7 Mar 23 – 14 Mar 23	8	✈	\$6,866	\$6,808	\$8,377	\$9,132	\$9,887	\$12,016	POA	NSW
23012MEL	8 Mar 23 – 14 Mar 23	7	✈	\$5,539	\$5,492	\$6,758	\$7,367	\$7,976	\$9,693	POA	NSW
23012PER	7 Mar 23 – 14 Mar 23	8	✈	\$7,475	\$7,411	\$9,120	\$9,942	\$10,764	\$13,081	POA	NSW
23012SYD	9 Mar 23 – 13 Mar 23	5	✈	\$4,118	\$4,083	\$5,024	\$5,477	\$5,930	\$7,207	POA	NSW

## 23020 MOUNTAIN PAMPERING

- Enjoy the countryside go by as we make our way up the Hume with a stop at the Holbrook Submarine.
- Relax in the Blue Mountains with a pampering session, a lovely lunch & some shopping.
- Take in the panoramic view of the spectacular Blue Mountains from the Scenic Cableway.
- Cook up a feast at a personally crafted cooking adventure, enjoy feasting on your creations.
- Explore the magical & mystical depths of Jenolan Caves.
- Wander back in time at Little Hartley Village & the Bygone Beauty's Treasured Teapot Museum & Tearooms.



DEPART	DATE	DAYS	TRANSPORT	PRICING						WHEELIES	STATE
				1:5	Members 1:5	1:4	1:3	1:2	1:1		
23020ADL	26 April 23 - 3 May 23	8	✂	\$6,605	\$6,549	\$8,058	\$8,785	\$9,511	\$11,559	POA	NSW
23020BNE	26 April 23 - 3 May 23	8	✂	\$6,895	\$6,836	\$8,412	\$9,170	\$9,929	\$12,066	POA	NSW
23020CBR	28 April 23 - 2 May 23	5	✂	\$4,713	\$4,673	\$5,750	\$6,268	\$6,787	\$8,248	POA	NSW
23020DRW	26 April 23 - 3 May 23	8	✂	\$7,591	\$7,526	\$9,261	\$10,096	\$10,931	\$13,284	POA	NSW
23020HBA	26 April 23 - 3 May 23	8	✂	\$6,678	\$6,621	\$8,147	\$8,882	\$9,616	\$11,687	POA	NSW
23020MEL	27 April 23 - 3 May 23	7	✂	\$5,351	\$5,306	\$6,528	\$7,117	\$7,705	\$9,364	POA	NSW
23020PER	26 April 23 - 3 May 23	8	✂	\$7,287	\$7,225	\$8,890	\$9,692	\$10,493	\$12,752	POA	NSW
23020SYD	28 April 23 - 2 May 23	5	✂	\$3,973	\$3,939	\$4,847	\$5,284	\$5,721	\$6,953	POA	NSW

Updated pricelist are on page 29 to 36.



## 23024 DUBBO GLAMPING

- Stop off in Parkes to explore 'The Dish' an Australian icon.
- Spend an interesting afternoon at Aladdin's Cave Bottlehouse & the historic Old Dubbo Gaol.
- Walk or ride your way around the impressive Taronga Western Plains Zoo, home to a large variety of rare & endangered animals.
- Enjoy the ultimate glamping experience with an overnight stay at the Zoo & an exclusive behind-the-scenes tour.
- Relax with a picnic in the beautiful Dubbo Regional Botanic Gardens.
- Discover some history at the Junee Roundhouse Museum & Flour Mill & create your own chocolatey treats to take home.



DEPART	DATE	DAYS	TRANSPORT	PRICING						WHEELIES	STATE
				1:5	Members 1:5	1:4	1:3	1:2	1:1		
23024ADL	17 May 23 - 24 May 23	8	✂	\$6,494	\$6,439	\$7,923	\$8,637	\$9,351	\$11,365	POA	NSW
23024BNE	18 May 23 - 24 May 23	7	✂	\$6,813	\$6,755	\$8,312	\$9,061	\$9,811	\$11,923	POA	NSW
23024CBR	18 May 23 - 24 May 23	7	✂	\$6,595	\$6,539	\$8,046	\$8,771	\$9,497	\$11,541	POA	NSW
23024DRW	18 May 23 - 24 May 23	7	✂	\$7,349	\$7,287	\$8,966	\$9,774	\$10,583	\$12,861	POA	NSW
23024HBA	18 May 23 - 24 May 23	7	✂	\$6,595	\$6,539	\$8,046	\$8,771	\$9,497	\$11,541	POA	NSW
23024MEL	18 May 23 - 24 May 23	7	✂	\$5,109	\$5,066	\$6,233	\$6,795	\$7,357	\$8,941	POA	NSW
23024PER	18 May 23 - 24 May 23	7	✂	\$7,045	\$6,985	\$8,595	\$9,370	\$10,145	\$12,329	POA	NSW
23024SYD	19 May 23 - 24 May 23	6	✂	\$4,748	\$4,708	\$5,793	\$6,315	\$6,837	\$8,309	POA	NSW

Updated pricelist are on page 29 to 36.

## 23029 GARDENS, MARKETS & MUSEUMS

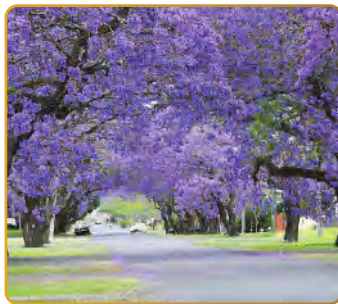
- Explore Sydney's vibrant market scene.
- Hold tight as we travel through time at the Sydney Bus Museum.
- Wander through the White Rabbit Gallery Museum which houses one of the world's largest and most significant collections of contemporary Chinese art.
- Enjoy a crown jewel of gardens at The Calyx & the incredible view of the Harbor at dusk at the Sydney Observatory.
- Get up close and personal with over 4000 animals at the Taronga Zoo.
- Get in touch with Sydney's history at The Rocks Discovery Museum.



DEPART	DATE	DAYS	TRANSPORT	PRICING						WHEELIES	STATE
				1:5	Members 1:5	1:4	1:3	1:2	1:1		
23029ADL	13 June 23 - 20 June 23	8	✂	\$6,247	\$6,194	\$7,621	\$8,309	\$8,996	\$10,932	POA	NSW
23029BNE	15 June 23 - 19 June 23	5	✂	\$3,981	\$3,947	\$4,857	\$5,295	\$5,733	\$6,967	POA	NSW
23029CBR	15 June 23 - 19 June 23	5	✂	\$4,024	\$3,990	\$4,909	\$5,352	\$5,795	\$7,042	POA	NSW
23029DRW	13 June 23 - 20 June 23	8	✂	\$7,103	\$7,043	\$8,666	\$9,447	\$10,228	\$12,430	POA	NSW
23029HBA	13 June 23 - 20 June 23	8	✂	\$6,189	\$6,136	\$7,551	\$8,231	\$8,912	\$10,831	POA	NSW
23029MEL	14 June 23 - 20 June 23	7	✂	\$4,862	\$4,821	\$5,932	\$6,466	\$7,001	\$8,509	POA	NSW
23029PER	13 June 23 - 20 June 23	8	✂	\$6,798	\$6,740	\$8,294	\$9,041	\$9,789	\$11,897	POA	NSW
23029SYD	15 June 23 - 19 June 23	5	✂	\$3,546	\$3,516	\$4,326	\$4,716	\$5,106	\$6,206	POA	NSW

Updated pricelist are on page 29 to 36.





## 23033 CLARENCE VALLEY DELIGHTS

- Enjoy the breathtaking sight of the famous Grafton Jacaranda's, a sea of lilac lining the streets.
- Wander through the eclectic Grafton Regional Galley & step back in time at the historic Yamba Museum.
- Sit back & relax as we cruise the magnificent Clarence River & enjoy the live music on board.
- A day on the farm, meandering through the orchards, meeting all the animals & enjoying the fresh, local produce at The Peach Farm.
- Begin the day with a tour of the Botero Roastery & end it with a tour through the Sanctus Brewing Company.
- Learn the art of ancient indigenous weaving with a workshop at the Yarrowarra Aboriginal Cultural centre.



DEPART	DATE	DAYS	TRANSPORT	PRICING						WHEELIES	STATE
				1:5	Members 1:5	1:4	1:3	1:2	1:1		
23033ADL	10 July 23 - 20 July 23	11	✈	\$8,461	\$8,389	\$10,322	\$11,253	\$12,184	\$14,807	POA	NSW
23033BNE	12 July 23 - 19 July 23	8	✈	\$6,105	\$6,053	\$7,448	\$8,120	\$8,791	\$10,684	POA	NSW
23033CBR	12 July 23 - 19 July 23	8	✈	\$6,148	\$6,096	\$7,501	\$8,177	\$8,853	\$10,759	POA	NSW
23033DRW	10 July 23 - 20 July 23	11	✈	\$9,317	\$9,238	\$11,367	\$12,392	\$13,416	\$16,305	POA	NSW
23033HBA	10 July 23 - 20 July 23	11	✈	\$8,403	\$8,332	\$10,252	\$11,176	\$12,100	\$14,705	POA	NSW
23033MEL	11 July 23 - 20 July 23	10	✈	\$7,076	\$7,016	\$8,633	\$9,411	\$10,189	\$12,383	POA	NSW
23033PER	10 July 23 - 20 July 23	11	✈	\$9,012	\$8,935	\$10,995	\$11,986	\$12,977	\$15,771	POA	NSW
23033SYD	12 July 23 - 19 July 23	8	✈	\$6,373	\$6,319	\$7,775	\$8,476	\$9,177	\$11,153	POA	NSW

Updated pricelist are on page 29 to 36.

## 23039 WHALES, DOLPHINS & FISHING

- Watch for the majestic Humpback Whales on a whale cruise.
- Visit the Whale Museum and hear about 'Old Tom' the legendary killer whale
- Shop for crafts and local produce at the Merimbula Seaside Market
- Sit back and relax as we enjoy the day fishing
- Cruise around Lakes Entrance and see the seals and possibly dolphins
- See the marine life at the Griffiths Sea Shell Museum & Aquarium



DEPART	DATE	DAYS	TRANSPORT	PRICING						WHEELIES	STATE
				1:5	Members 1:5	1:4	1:3	1:2	1:1		
23039ADL	10 Aug 23 - 17 Aug 23	8	✈	\$6,462	\$6,407	\$7,884	\$8,594	\$9,305	\$11,309	POA	NSW
23039BNE	10 Aug 23 - 17 Aug 23	8	✈	\$6,621	\$6,565	\$8,078	\$8,806	\$9,534	\$11,587	POA	NSW
23039CBR	10 Aug 23 - 17 Aug 23	8	✈	\$6,447	\$6,392	\$7,865	\$8,575	\$9,284	\$11,282	POA	NSW
23039DRW	10 Aug 23 - 17 Aug 23	8	✈	\$7,317	\$7,255	\$8,927	\$9,732	\$10,536	\$12,805	POA	NSW
23039HBA	10 Aug 23 - 17 Aug 23	8	✈	\$6,404	\$6,350	\$7,813	\$8,517	\$9,222	\$11,207	POA	NSW
23039MEL	11 Aug 23 - 17 Aug 23	7	✈	\$5,077	\$5,034	\$6,194	\$6,752	\$7,311	\$8,885	POA	NSW
23039PER	10 Aug 23 - 17 Aug 23	8	✈	\$7,013	\$6,953	\$8,556	\$9,327	\$10,099	\$12,273	POA	NSW
23039SYD	10 Aug 23 - 17 Aug 23	8	✈	\$6,367	\$6,313	\$7,768	\$8,468	\$9,168	\$11,142	POA	NSW

Updated pricelist are on page 29 to 36.



## 23043 TRAINS TO FLORIADE

- Acquaint yourself with Australia's Capital with a stop at Parliament House, the National Museum of Australia & a spectacular view from Mt. Ainslie.
- Pay your respects to our fallen comrades with a moving visit to The Australian War Memorial.
- Let the music, entertainment & brilliant display of flowers lift your spirits as we join the annual Floriade Festival.
- Relax with the tranquility as we cruise along Lake Burley Griffin followed by a well-deserved pampering session.
- Step back in 'the land before time' as we explore The National Dinosaur Museum.
- Meet & greet the furry, scaly & underwater locals at the National Zoo & Aquarium.



DEPART	DATE	DAYS	TRANSPORT	PRICING						WHEELIES	STATE
				1:5	Members 1:5	1:4	1:3	1:2	1:1		
23043ADL	8 Sep 23 - 15 Sep 23	8	✈	\$6,824	\$6,766	\$8,325	\$9,076	\$9,827	\$11,942	POA	NSW
23043BNE	8 Sep 23 - 15 Sep 23	8	✈	\$6,984	\$6,925	\$8,520	\$9,289	\$10,057	\$12,222	POA	NSW
23043CBR	8 Sep 23 - 14 Sep 23	7	✈	\$6,109	\$6,057	\$7,453	\$8,125	\$8,797	\$10,691	POA	NSW
23043DRW	8 Sep 23 - 15 Sep 23	8	✈	\$7,680	\$7,615	\$9,370	\$10,214	\$11,059	\$13,440	POA	NSW
23043HBA	8 Sep 23 - 15 Sep 23	8	✈	\$6,766	\$6,708	\$8,255	\$8,999	\$9,743	\$11,841	POA	NSW
23043MEL	9 Sep 23 - 15 Sep 23	7	✈	\$5,439	\$5,393	\$6,636	\$7,234	\$7,832	\$9,518	POA	NSW
23043PER	8 Sep 23 - 15 Sep 23	8	✈	\$7,375	\$7,312	\$8,998	\$9,809	\$10,620	\$12,906	POA	NSW
23043SYD	9 Sep 23 - 15 Sep 23	7	✈	\$5,860	\$5,810	\$7,149	\$7,794	\$8,438	\$10,255	POA	NSW

Updated pricelist are on page 29 to 36.

## 23047 BATHURST 23

- Start up your engines as we begin the journey to the home of racing- Mt. Panorama.
- Explore the history of racing at the Bathurst Motor Museum.
- Take the shuttle bus to the top of the mountain for a spectacular view across the track.
- Warm up with time trials & special track events ahead of race day.
- Settle in for the biggest V8 racing event in Australia as we enjoy all the action of race day.



DEPART	DATE	DAYS	TRANSPORT	PRICING						WHEELIES	STATE
				1:5	Members 1:5	1:4	1:3	1:2	1:1		
23047ADL	3 Oct 23 - 10 Oct 23	8	✈	\$7,223	\$7,162	\$8,812	\$9,607	\$10,401	\$12,640	POA	NSW
23047BNE	5 Oct 23 - 9 Oct 23	5	✈	\$4,568	\$4,529	\$5,573	\$6,075	\$6,578	\$7,994	POA	NSW
23047CBR	4 Oct 23 - 10 Oct 23	7	🚗	\$6,563	\$6,507	\$8,007	\$8,729	\$9,451	\$11,485	POA	NSW
23047DRW	3 Oct 23 - 10 Oct 23	8	✈	\$8,078	\$8,009	\$9,855	\$10,744	\$11,632	\$14,137	POA	NSW
23047HBA	3 Oct 23 - 10 Oct 23	8	✈	\$7,324	\$7,262	\$8,935	\$9,741	\$10,547	\$12,817	POA	NSW
23047MEL	4 Oct 23 - 10 Oct 23	7	🚗	\$5,838	\$5,788	\$7,122	\$7,765	\$8,407	\$10,217	POA	NSW
23047PER	3 Oct 23 - 10 Oct 23	8	✈	\$7,774	\$7,708	\$9,484	\$10,339	\$11,195	\$13,605	POA	NSW
23047SYD	5 Oct 23 - 9 Oct 23	5	🚗	\$4,568	\$4,529	\$5,573	\$6,075	\$6,578	\$7,994	POA	NSW

Updated pricelist are on page 29 to 36.



## 23054 WAGGA FOOD & ANIMALS

- Enjoy the history of Wagga Wagga set on the banks of the magnificent Murrumbidgee River.
- Indulge our senses with a tour at the Junee Licorice & Chocolate Factory.
- Experience the workings at the world class Wollundry Grove Olives, enjoy tasting the produce.
- Explore the historical displays at the RAAF Aviation Heritage Centre.
- Relax by the sandy banks of the Murrumbidgee River at the unique Wagga inland beach.
- Meander through the spectacular Wagga Botanic Gardens & enjoy the Miniature Railway.

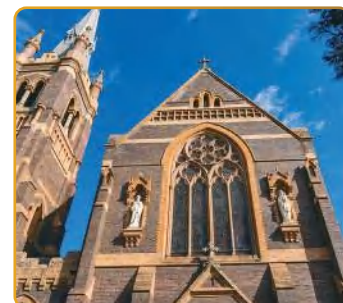


DEPART	DATE	DAYS	TRANSPORT	PRICING						WHEELIES	STATE
				1:5	Members 1:5	1:4	1:3	1:2	1:1		
23054ADL	8 Nov 23 - 15 Nov 23	8	✈	\$6,801	\$6,743	\$8,297	\$9,045	\$9,793	\$11,902	POA	NSW
23054BNE	8 Nov 23 - 15 Nov 23	8	✈	\$6,801	\$6,743	\$8,297	\$9,045	\$9,793	\$11,902	POA	NSW
23054CBR	9 Nov 23 - 15 Nov 23	7	🚗	\$6,199	\$6,146	\$7,563	\$8,245	\$8,927	\$10,848	POA	NSW
23054DRW	8 Nov 23 - 15 Nov 23	8	✈	\$7,656	\$7,591	\$9,340	\$10,182	\$11,025	\$13,398	POA	NSW
23054HBA	8 Nov 23 - 15 Nov 23	8	✈	\$6,902	\$6,843	\$8,420	\$9,180	\$9,939	\$12,079	POA	NSW
23054MEL	9 Nov 23 - 15 Nov 23	7	🚗	\$5,416	\$5,370	\$6,608	\$7,203	\$7,799	\$9,478	POA	NSW
23054PER	8 Nov 23 - 15 Nov 23	8	✈	\$7,352	\$7,290	\$8,969	\$9,778	\$10,587	\$12,866	POA	NSW
23054SYD	9 Nov 23 - 15 Nov 23	7	🚗	\$6,257	\$6,204	\$7,634	\$8,322	\$9,010	\$10,950	POA	NSW

Updated pricelist are on page 29 to 36.

## 23059 HERITAGE FOSSICKING

- Join the Armidale hop on, hop off bus for an informative & historical tour through town & a visit to the Railway Museum.
- Step back in time at the Guyra Antique Machinery Museum.
- Enjoy a relaxing picnic & some birdwatching at the Mother of Ducks Lagoon Nature Reserve.
- Admire the myriad of gems & minerals at the Emmaville Mining Museum, wander through the blacksmith shop & old wood-fired bakery.
- Discover your artistic flare & paint your own canvas under the watchful eye of local indigenous artist Lloyd Gawura Hornsby.
- Wander through the Australian Standing Stones, a monument to Celtic people past & present.



DEPART	DATE	DAYS	TRANSPORT	PRICING						WHEELIES	STATE
				1:5	Members 1:5	1:4	1:3	1:2	1:1		
23059ADL	11 Dec 23 - 19 Dec 23	9	✈	\$7,562	\$7,498	\$9,226	\$10,057	\$10,889	\$13,234	POA	NSW
23059BNE	11 Dec 23 - 19 Dec 23	9	✈	\$7,881	\$7,814	\$9,615	\$10,482	\$11,349	\$13,792	POA	NSW
23059CBR	11 Dec 23 - 19 Dec 23	9	✈	\$7,664	\$7,599	\$9,350	\$10,193	\$11,036	\$13,412	POA	NSW
23059DRW	11 Dec 23 - 19 Dec 23	9	✈	\$8,418	\$8,346	\$10,270	\$11,196	\$12,122	\$14,732	POA	NSW
23059HBA	11 Dec 23 - 19 Dec 23	9	✈	\$7,664	\$7,599	\$9,350	\$10,193	\$11,036	\$13,412	POA	NSW
23059MEL	12 Dec 23 - 19 Dec 23	8	🚗	\$6,177	\$6,124	\$7,536	\$8,215	\$8,895	\$10,810	POA	NSW
23059PER	11 Dec 23 - 19 Dec 23	9	✈	\$8,113	\$8,044	\$9,898	\$10,790	\$11,683	\$14,198	POA	NSW
23059SYD	12 Dec 23 - 19 Dec 23	8	🚗	\$7,134	\$7,073	\$8,703	\$9,488	\$10,273	\$12,485	POA	NSW

Updated pricelist are on page 29 to 36.







## 23021 BINNS TRACK 4WD DRIVING

- Meet our 4WD team in Alice Springs as we begin our adventure north.
- Camp under the brilliant starry sky at Tennant Creek.
- Explore the stunning Lytwelepeny / Davenport Ranges National Park.
- Unwind in the old-world charm at Molly Clark's Old Andado Homestead.
- Enjoy the native wildlife, bursting colours & incredible rock formations as we travel along Binns Track.
- Visit the quirky outback pubs scattered along our travels.
- Watch out for the amazing sight of wildlife running alongside our 4WD's!

DEPART	DATE	DAYS	TRANSPORT	PRICING						WHEELIES	STATE
				1:5	Members 1:5	1:4	1:3	1:2	1:1		
23021ADL	1 May 23 - 11 May 23	11	✈️ 🚐	\$10,320	\$10,232	\$12,590	\$13,726	\$14,861	\$18,060	POA	NT
23021BNE	1 May 23 - 11 May 23	11	✈️ 🚐	\$10,842	\$10,750	\$13,227	\$14,420	\$15,612	\$18,974	POA	NT
23021CBR	1 May 23 - 11 May 23	11	✈️ 🚐	\$10,942	\$10,849	\$13,349	\$14,553	\$15,756	\$19,149	POA	NT
23021DRW	1 May 23 - 11 May 23	11	✈️ 🚐	\$11,263	\$11,167	\$13,741	\$14,980	\$16,219	\$19,710	POA	NT
23021HBA	1 May 23 - 11 May 23	11	✈️ 🚐	\$10,967	\$10,874	\$13,380	\$14,586	\$15,792	\$19,192	POA	NT
23021MEL	1 May 23 - 11 May 23	11	✈️ 🚐	\$10,910	\$10,817	\$13,310	\$14,510	\$15,710	\$19,093	POA	NT
23021PER	1 May 23 - 11 May 23	11	✈️ 🚐	\$11,347	\$11,251	\$13,843	\$15,092	\$16,340	\$19,857	POA	NT
23021SYD	1 May 23 - 11 May 23	11	✈️ 🚐	\$10,651	\$10,560	\$12,994	\$14,166	\$15,337	\$18,639	POA	NT

Updated pricelist are on page 29 to 36.

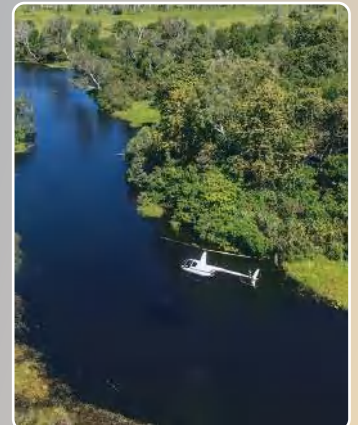


## 23034 TOP END ADVENTURES

- Enjoy an informative tour of Darwin city & surrounds.
- Immerse yourself in Darwin's rich WW2 history as we visit the USS Peary Memorial & the fascinating WW2 Storage Tunnels.
- Join the wonderful Pukatj Aboriginal cultural tour & learn some new skills.
- Prepare yourself for the excitement of the Jumping Crocodile Cruise & a visit to the Territory Wildlife Park!
- A bucket-list adventure as we take a scenic helicopter ride over the spectacular Litchfield region.
- Try your hand at catching the 'big one' as we join a Barramundi Adventure.

DEPART	DATE	DAYS	TRANSPORT	PRICING						WHEELIES	STATE
				1:5	Members 1:5	1:4	1:3	1:2	1:1		
23034ADL	18 Jul 23 - 24 Jul 23	7	✈️	\$10,213	\$10,126	\$12,460	\$13,583	\$14,707	\$17,873	POA	NT
23034BNE	18 Jul 23 - 24 Jul 23	7	✈️	\$8,886	\$8,810	\$10,841	\$11,818	\$12,796	\$15,551	POA	NT
23034CBR	18 Jul 23 - 24 Jul 23	7	✈️	\$9,657	\$9,575	\$11,782	\$12,844	\$13,906	\$16,900	POA	NT
23034DRW	18 Jul 23 - 24 Jul 23	7	✈️ 🚐	\$7,487	\$7,423	\$9,134	\$9,958	\$10,781	\$13,102	POA	NT
23034HBA	18 Jul 23 - 24 Jul 23	7	✈️	\$10,024	\$9,939	\$12,229	\$13,332	\$14,435	\$17,542	POA	NT
23034MEL	18 Jul 23 - 24 Jul 23	7	✈️	\$9,792	\$9,709	\$11,946	\$13,023	\$14,100	\$17,136	POA	NT
23034PER	18 Jul 23 - 24 Jul 23	7	✈️	\$10,206	\$10,119	\$12,451	\$13,574	\$14,697	\$17,861	POA	NT
23034SYD	18 Jul 23 - 24 Jul 23	7	✈️	\$9,192	\$9,114	\$11,214	\$12,225	\$13,236	\$16,086	POA	NT

Updated pricelist are on page 29 to 36.



## 23018 CAIRNS ATTRACTIONS

- Have a wild time at Hartley's Crocodile Adventures!
- Browse all on offer at the bustling night markets.
- Join a Pamagirri Guide for an authentic tour through the Rainforestation Nature Park.
- Step back in time at the Australian Armour & Artillery Museum.
- Meet the underwater world at the world-class Cairns Aquarium.
- Relax on a wonderful lunch cruise deep into Trinity Inlet.



DEPART	DATE	DAYS	TRANSPORT	PRICING						WHEELIES	STATE
				1:5	Members 1:5	1:4	1:3	1:2	1:1		
23018ADL	13 Apr 23 - 19 Apr 23	7	✈	\$6,537	\$6,481	\$7,975	\$8,694	\$9,413	\$11,440	POA	QLD
23018BNE	13 Apr 23 - 19 Apr 23	7	✈	\$6,621	\$6,565	\$8,078	\$8,806	\$9,534	\$11,587	POA	QLD
23018CBR	13 Apr 23 - 19 Apr 23	7	✈	\$7,003	\$6,943	\$8,544	\$9,314	\$10,084	\$12,255	POA	QLD
23018DRW	13 Apr 23 - 19 Apr 23	7	✈	\$6,743	\$6,686	\$8,226	\$8,968	\$9,710	\$11,800	POA	QLD
23018HBA	13 Apr 23 - 19 Apr 23	7	✈	\$6,881	\$6,823	\$8,395	\$9,152	\$9,909	\$12,042	POA	QLD
23018MEL	13 Apr 23 - 19 Apr 23	7	✈	\$6,873	\$6,815	\$8,385	\$9,141	\$9,897	\$12,028	POA	QLD
23019PER	13 Apr 23 - 19 Apr 23	7	✈	\$7,642	\$7,577	\$9,323	\$10,164	\$11,004	\$13,374	POA	QLD
23018SYD	13 Apr 23 - 19 Apr 23	7	✈	\$6,850	\$6,792	\$8,357	\$9,111	\$9,864	\$11,988	POA	QLD

Updated pricelist are on page 29 to 36.



## 23019 TEA, SHOPPING & PAMPERING

- Treat yourself to some well-deserved relaxation & pampering.
- Enjoy a wonderful Brisbane Island cruise complete with Devonshire tea.
- Indulge in some shopping at all the Brisbane hot spots.
- Relax with a delicious dinner aboard the Kookaburra Queen paddle-steamer.
- Spot all the spectacular sights of Brisbane from our River Tour cruise.
- Sit back & be pampered with a lovely manicure & pedicure to finish off a wonderful holiday.



DEPART	DATE	DAYS	TRANSPORT	PRICING						WHEELIES	STATE
				1:5	Members 1:5	1:4	1:3	1:2	1:1		
23019ADL	13 Apr 23 - 23 Apr 23	11	✈	\$7,946	\$7,878	\$9,694	\$10,568	\$11,442	\$13,906	POA	QLD
23019BNE	17 Apr 23 - 21 Apr 23	5	✈	\$3,755	\$3,723	\$4,581	\$4,994	\$5,407	\$6,571	POA	QLD
23019CBR	14 Apr 23 - 23 Apr 23	10	✈	\$7,287	\$7,225	\$8,890	\$9,692	\$10,493	\$12,752	POA	QLD
23019DRW	13 Apr 23 - 23 Apr 23	11	✈	\$8,918	\$8,842	\$10,880	\$11,861	\$12,842	\$15,607	POA	QLD
23019HBA	13 Apr 23 - 23 Apr 23	11	✈	\$8,004	\$7,936	\$9,765	\$10,645	\$11,526	\$14,007	POA	QLD
23019MEL	14 Apr 23 - 23 Apr 23	10	✈	\$6,678	\$6,621	\$8,147	\$8,882	\$9,616	\$11,687	POA	QLD
23019PER	13 Apr 23 - 23 Apr 23	11	✈	\$8,613	\$8,540	\$10,508	\$11,455	\$12,403	\$15,073	POA	QLD
23019SYD	15 Apr 23 - 22 Apr 23	8	✈	\$5,390	\$5,344	\$6,576	\$7,169	\$7,762	\$9,433	POA	QLD

Updated pricelist are on page 29 to 36.

## 23027 EAT, PLAY & STAY - SUNSHINE COAST

- Get in touch with all the wonderful creatures of the sea at Sea Life on the Sunshine Coast.
- Enjoy the fun of the Ginger Factory with rides, tours, cafes & more, all set in cool, sub-tropical gardens.
- Climb aboard the Noosa Ferry for a relaxing cruise as we explore all Noosa has to offer.
- Prepare for a day of excitement at the iconic Australia Zoo.
- Join us at the Queensland Air Museum for the most diverse, historic aviation history in Australia.
- Take in the spectacular views across Noosa & the Glasshouse mountains from Laguna Lookout.

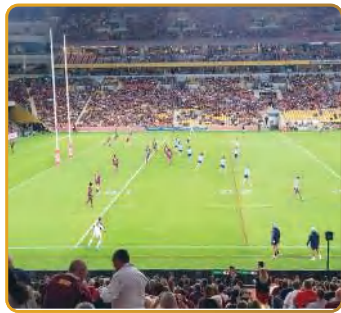


DEPART	DATE	DAYS	TRANSPORT	PRICING						WHEELIES	STATE
				1:5	Members 1:5	1:4	1:3	1:2	1:1		
23027ADL	31 May 23 - 10 Jun 23	11	✈	\$8,113	\$8,044	\$9,898	\$10,790	\$11,683	\$14,198	POA	QLD
23027BNE	4 Jun 23 - 8 Jun 23	5	✈	\$3,685	\$3,654	\$4,496	\$4,901	\$5,306	\$6,449	POA	QLD
23027CBR	31 May 23 - 10 Jun 23	11	✈	\$7,453	\$7,390	\$9,093	\$9,912	\$10,732	\$13,043	POA	QLD
23027DRW	31 May 23 - 10 Jun 23	11	✈	\$9,085	\$9,008	\$11,084	\$12,083	\$13,082	\$15,899	POA	QLD
23027HBA	31 May 23 - 10 Jun 23	11	✈	\$8,171	\$8,102	\$9,969	\$10,867	\$11,766	\$14,299	POA	QLD
23027MEL	1 Jun 23 - 10 Jun 23	10	✈	\$6,844	\$6,786	\$8,350	\$9,103	\$9,855	\$11,977	POA	QLD
23027PER	31 May 23 - 10 Jun 23	11	✈	\$8,780	\$8,705	\$10,712	\$11,677	\$12,643	\$15,365	POA	QLD
23027SYD	2 Jun 23 - 9 Jun 23	8	✈	\$5,586	\$5,539	\$6,815	\$7,429	\$8,044	\$9,776	POA	QLD

Updated pricelist are on page 29 to 36.







## 23028 FEEL THAT NRL ROAR!

- Cheer on your teams as we join some blockbuster NRL games.
- Enjoy a behind-the-scenes tour of the iconic Suncorp Stadium.
- Relax on a cruise down the Brisbane River.
- Shop at the factory outlets for your favourite NRL merchandise & souvenirs.
- Explore the wonderful city vibe of Brisbane.



DEPART	DATE	DAYS	TRANSPORT	PRICING						WHEELIES	STATE
				1:5	Members 1:5	1:4	1:3	1:2	1:1		
23028ADL	8 Jun 23 - 12 Jun 23	5	✈️	\$5,329	\$5,284	\$6,501	\$7,088	\$7,674	\$9,326	POA	QLD
23028BNE	8 Jun 23 - 12 Jun 23	5	🚗	\$4,430	\$4,392	\$5,405	\$5,892	\$6,379	\$7,753	POA	QLD
23028CBR	8 Jun 23 - 12 Jun 23	5	✈️	\$5,387	\$5,341	\$6,572	\$7,165	\$7,757	\$9,427	POA	QLD
23028DRW	8 Jun 23 - 12 Jun 23	5	✈️	\$6,315	\$6,261	\$7,704	\$8,399	\$9,094	\$11,051	POA	QLD
23028HBA	8 Jun 23 - 12 Jun 23	5	✈️	\$5,213	\$5,169	\$6,360	\$6,933	\$7,507	\$9,123	POA	QLD
23028MEL	8 Jun 23 - 12 Jun 23	5	✈️	\$5,141	\$5,097	\$6,272	\$6,838	\$7,403	\$8,997	POA	QLD
23028PER	8 Jun 23 - 12 Jun 23	5	✈️	\$6,156	\$6,104	\$7,510	\$8,187	\$8,865	\$10,773	POA	QLD
23028SYD	8 Jun 23 - 12 Jun 23	5	✈️	\$5,039	\$4,996	\$6,148	\$6,702	\$7,256	\$8,818	POA	QLD

Updated pricelist are on page 29 to 36.

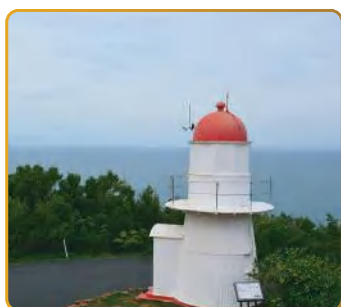
## 23030 DESTINATION GOLD COAST

- Start your adventure with a fun road-trip up to the Gold Coast.
- Engage with the various animals, big & small at the Currumbin Wildlife Sanctuary.
- Enjoy all the thrills & excitement of the rides, characters & shows at Movie World.
- Pick up some great bargains at the iconic Carrara Markets.
- Visit an underwater world adventure as we meet all the residents of SeaWorld.
- Witness the amazing Affinity Dolphin Presentation



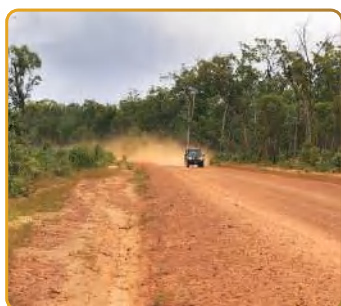
DEPART	DATE	DAYS	TRANSPORT	PRICING						WHEELIES	STATE
				1:5	Members 1:5	1:4	1:3	1:2	1:1		
23030ADL	26 Jun 23 - 6 Jul 23	11	✈️	\$8,077	\$8,008	\$9,854	\$10,742	\$11,631	\$14,135	POA	QLD
23030BNE	30 Jun 23 - 4 Jul 23	5	🚗	\$3,480	\$3,450	\$4,246	\$4,628	\$5,011	\$6,090	POA	QLD
23030CBR	27 Jun 23 - 6 Jul 23	10	🚗	\$7,287	\$7,225	\$8,890	\$9,692	\$10,493	\$12,752	POA	QLD
23030DRW	26 Jun 23 - 6 Jul 23	11	✈️	\$8,918	\$8,842	\$10,880	\$11,861	\$12,842	\$15,607	POA	QLD
23030HBA	26 Jun 23 - 6 Jul 23	11	✈️	\$8,004	\$7,936	\$9,765	\$10,645	\$11,526	\$14,007	POA	QLD
23030MEL	27 Jun 23 - 6 Jul 23	10	🚗	\$6,678	\$6,621	\$8,147	\$8,882	\$9,616	\$11,687	POA	QLD
23030PER	26 Jun 23 - 6 Jul 23	11	✈️	\$8,613	\$8,540	\$10,508	\$11,455	\$12,403	\$15,073	POA	QLD
23030SYD	28 Jun 23 - 5 Jul 23	8	🚗	\$5,405	\$5,359	\$6,594	\$7,189	\$7,783	\$9,459	POA	QLD

Updated pricelist are on page 29 to 36.



## 23036 CAPE YORK 4WD

- 4WD through the stunning Daintree Forest.
- Camp under the stars up North.
- Pass through the many Indigenous communities & villages.
- Undertake the 4WD crossing of the crazy Palm Creek.
- Look out for the crocodiles in the mighty Jardine River.
- Take a photo opportunity as we visit Australia's most northern point.



DEPART	DATE	DAYS	TRANSPORT	PRICING						WHEELIES	STATE
				1:5	Members 1:5	1:4	1:3	1:2	1:1		
23036ADL	1 Aug 23 - 10 Aug 23	10	✈️ 🚗	\$11,264	\$11,168	\$13,742	\$14,981	\$16,220	\$19,712	POA	QLD
23036BNE	1 Aug 23 - 10 Aug 23	10	✈️ 🚗	\$11,139	\$11,044	\$13,590	\$14,815	\$16,040	\$19,493	POA	QLD
23036CBR	1 Aug 23 - 10 Aug 23	10	✈️ 🚗	\$11,599	\$11,500	\$14,151	\$15,427	\$16,703	\$20,298	POA	QLD
23036DRW	1 Aug 23 - 10 Aug 23	10	✈️ 🚗	\$11,339	\$11,243	\$13,834	\$15,081	\$16,328	\$19,843	POA	QLD
23036HBA	1 Aug 23 - 10 Aug 23	10	✈️ 🚗	\$11,521	\$11,423	\$14,056	\$15,323	\$16,590	\$20,162	POA	QLD
23036MEL	1 Aug 23 - 10 Aug 23	10	✈️ 🚗	\$11,499	\$11,401	\$14,029	\$15,294	\$16,559	\$20,123	POA	QLD
23036PER	1 Aug 23 - 10 Aug 23	10	✈️ 🚗	\$12,238	\$12,134	\$14,930	\$16,277	\$17,623	\$21,417	POA	QLD
23036SYD	1 Aug 23 - 10 Aug 23	10	✈️ 🚗	\$11,455	\$11,358	\$13,975	\$15,235	\$16,495	\$20,046	POA	QLD

Updated pricelist are on page 29 to 36.

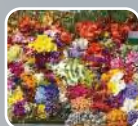
## 23040 GYMPIE MUSTER

- Enjoy a road-trip up to Gympie with a stopover at Tamworth along the way.
- Sit & relax or get up & groove as we enjoy the many wonderful artists playing at this year's Gympie Muster.
- Admire the natural surroundings of the amphitheatre whilst enjoying Country, Blues, Bluegrass & Folk Rock.
- Don't forget to check the 'Back to the Bush' ballads, the stories of your favourite artists.
- Relax with a cruise along the beautiful Noosa River & admire the Noosa Sound Canals.



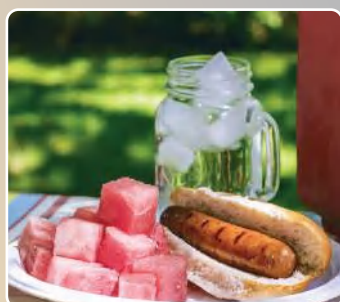
DEPART	DATE	DAYS	TRANSPORT	PRICING						WHEELIES	STATE
				1:5	Members 1:5	1:4	1:3	1:2	1:1		
23040ADL	19 Aug 23 - 30 Aug 23	12	✈️	\$9,365	\$9,285	\$11,425	\$12,455	\$13,486	\$16,389	POA	QLD
23040BNE	23 Aug 23 - 27 Aug 23	5	🚗	\$4,126	\$4,091	\$5,034	\$5,488	\$5,941	\$7,221	POA	QLD
23040CBR	20 Aug 23 - 30 Aug 23	11	🚗	\$8,574	\$8,501	\$10,460	\$11,403	\$12,347	\$15,005	POA	QLD
23040DRW	19 Aug 23 - 30 Aug 23	12	✈️	\$10,206	\$10,119	\$12,451	\$13,574	\$14,697	\$17,861	POA	QLD
23040HBA	19 Aug 23 - 30 Aug 23	12	✈️	\$9,292	\$9,213	\$11,336	\$12,358	\$13,380	\$16,261	POA	QLD
23040MEL	20 Aug 23 - 30 Aug 23	11	🚗	\$7,965	\$7,897	\$9,717	\$10,593	\$11,470	\$13,939	POA	QLD
23040PER	19 Aug 23 - 30 Aug 23	12	✈️	\$9,901	\$9,817	\$12,079	\$13,168	\$14,257	\$17,327	POA	QLD
23040SYD	2 Aug 23 - 30 Aug 23	9	🚗	\$6,776	\$6,718	\$8,267	\$9,012	\$9,757	\$11,858	POA	QLD

Updated pricelist are on page 29 to 36.



## 23045 TOOWOOMBA FLOWER FESTIVAL

- Admire the stunning Japanese Garden 'Ju Raku En'.
- Relax with a well-deserved massage.
- Sit back in the beautiful Laurel Bank Park & enjoy a BBQ lunch.
- Watch the gorgeous Grand Central Floral Parade as it weaves its way through the heart of the city.
- Join the fun of the Street Performers, carnival characters & more as the town comes alive.
- Enjoy the fun of the fair on carnival day, join the thrilling rides, pick up some showbags & some delicious eats.
- Take a spiritual journey on the 'Dreamtime Journey Coach' at Downs Steam tourist railway and museum.



DEPART	DATE	DAYS	TRANSPORT	PRICING						WHEELIES	STATE
				1:5	Members 1:5	1:4	1:3	1:2	1:1		
23045ADL	19 Sep 23 - 29 Sep 23	11	✈️	\$8,186	\$8,116	\$9,987	\$10,887	\$11,788	\$14,326	POA	QLD
23045BNE	23 Sep 23 - 27 Sep 23	5	🚗	\$3,810	\$3,778	\$4,648	\$5,067	\$5,486	\$6,668	POA	QLD
23045CBR	20 Sep 23 - 29 Sep 23	10	🚗	\$7,526	\$7,462	\$9,182	\$10,010	\$10,837	\$13,171	POA	QLD
23045DRW	19 Sep 23 - 29 Sep 23	11	✈️	\$9,157	\$9,079	\$11,172	\$12,179	\$13,186	\$16,025	POA	QLD
23045HBA	19 Sep 23 - 29 Sep 23	11	✈️	\$8,244	\$8,174	\$10,058	\$10,965	\$11,871	\$14,427	POA	QLD
23045MEL	20 Sep 23 - 29 Sep 23	10	🚗	\$6,917	\$6,858	\$8,439	\$9,200	\$9,960	\$12,105	POA	QLD
23045PER	19 Sep 23 - 29 Sep 23	11	✈️	\$8,853	\$8,778	\$10,801	\$11,774	\$12,748	\$15,493	POA	QLD
23045SYD	21 Sep 23 - 28 Sep 23	8	🚗	\$5,626	\$5,578	\$6,864	\$7,483	\$8,101	\$9,846	POA	QLD

Updated pricelist are on page 29 to 36.

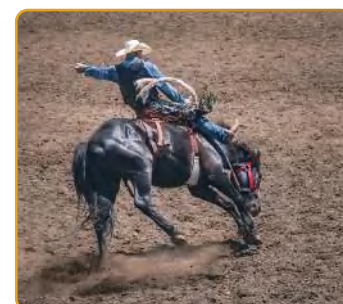
## 23055 ALL ABOARD THE TILT TRAIN

- Join the adventure as we board the Tilt Train from Brisbane to Rockhampton.
- Explore the impressive Capricorn caves with a tour of the spectacular Cathedral cave.
- Connect with some Indigenous history at the Dreamtime Cultural Centre.
- Visit the Rockhampton Heritage Village for a look into the local & colorful past of Rockhampton.
- For a fun day out meet the members at the Cooberrie Park Wildlife Sanctuary.
- Spend a wonderful night out on the town in vibrant Brisbane.



DEPART	DATE	DAYS	TRANSPORT	PRICING						WHEELIES	STATE
				1:5	Members 1:5	1:4	1:3	1:2	1:1		
23055ADL	18 Nov 23 - 24 Nov 23	7	✈️ 🚗	\$7,439	\$7,376	\$9,076	\$9,894	\$10,712	\$13,018	POA	QLD
23055BNE	19 Nov 23 - 23 Nov 23	5	🚗	\$5,075	\$5,032	\$6,192	\$6,750	\$7,308	\$8,881	POA	QLD
23055CBR	18 Nov 23 - 24 Nov 23	7	✈️ 🚗	\$7,497	\$7,433	\$9,146	\$9,971	\$10,796	\$13,120	POA	QLD
23055DRW	18 Nov 23 - 24 Nov 23	7	✈️ 🚗	\$8,425	\$8,353	\$10,279	\$11,205	\$12,132	\$14,744	POA	QLD
23055HBA	18 Nov 23 - 24 Nov 23	7	✈️ 🚗	\$7,323	\$7,261	\$8,934	\$9,740	\$10,545	\$12,815	POA	QLD
23055MEL	18 Nov 23 - 24 Nov 23	7	✈️ 🚗	\$7,250	\$7,188	\$8,845	\$9,643	\$10,440	\$12,688	POA	QLD
23055PER	18 Nov 23 - 24 Nov 23	7	✈️ 🚗	\$8,265	\$8,195	\$10,083	\$10,992	\$11,902	\$14,464	POA	QLD
23055SYD	18 Nov 23 - 24 Nov 23	7	✈️ 🚗	\$7,149	\$7,088	\$8,722	\$9,508	\$10,295	\$12,511	POA	QLD

Updated pricelist are on page 29 to 36.







## 23014 ADELAIDE ADVENTURES

- See the amazing restoration of the oldest surviving clipper ship in the world and visit the South Australian Maritime Museum
- Let's bounce, climb & fly our worries away at Latitude!
- A relaxing afternoon awaits us at the delightful Story book trail within the Carrick Hill's parkland.
- Bullet Point Sports fan or not, let's go behind the scenes of the Adelaide Oval.
- Ready your sweet tooth for a mouthwatering chocolate tour and tasting.
- Let's enjoy a gastronomic and shopping indulgence at the Central Market and Rundle Street.
- Explore MOD museum for an exceptional futuristic and fun experience.



DEPART	DATE	DAYS	TRANSPORT	PRICING						WHEELIES	STATE
				1:5	Members 1:5	1:4	1:3	1:2	1:1		
23014ADL	24 Mar 23 - 28 Mar 23	5	✈️	\$3,524	\$3,494	\$4,299	\$4,687	\$5,075	\$6,167	POA	SA
23014BNE	22 Mar 23 - 29 Mar 23	8	✈️	\$6,283	\$6,230	\$7,665	\$8,356	\$9,048	\$10,995	POA	SA
23014CBR	22 Mar 23 - 29 Mar 23	8	✈️	\$6,109	\$6,057	\$7,453	\$8,125	\$8,797	\$10,691	POA	SA
23014DRW	22 Mar 23 - 29 Mar 23	8	✈️	\$6,979	\$6,920	\$8,514	\$9,282	\$10,050	\$12,213	POA	SA
23014HBA	22 Mar 23 - 29 Mar 23	8	✈️	\$6,066	\$6,014	\$7,401	\$8,068	\$8,735	\$10,616	POA	SA
23014MEL	23 Mar 23 - 29 Mar 23	7	✈️	\$4,739	\$4,699	\$5,782	\$6,303	\$6,824	\$8,293	POA	SA
23014PER	22 Mar 23 - 29 Mar 23	8	✈️	\$6,675	\$6,618	\$8,144	\$8,878	\$9,612	\$11,681	POA	SA
23014SYD	22 Mar 23 - 29 Mar 23	8	✈️	\$6,030	\$5,979	\$7,357	\$8,020	\$8,683	\$10,553	POA	SA



## 23016 EASTER BERRIES & CHOCOLATE

- Enjoy a visit to Beerenberg Farm as there's nothing like the taste of freshly picked strawberries.
- Discover the secrets of chocolate making at the famous Melba Chocolate Factory.
- Be chef for a day with a private cooking class.
- Indulge in a taste of Europe at Red Cacao as we experience their rich and pure artisan chocolates.
- Feast on a delicious breakfast at the iconic Barossa Farmers Market.
- Celebrate Easter with a fun-filled Easter Egg hunt, be amazed with some of the treasures like the 1877 Grand Organ and The Herbig Family Tree at the Barossa Regional Gallery.

DEPART	DATE	DAYS	TRANSPORT	PRICING						WHEELIES	STATE
				1:5	Members 1:5	1:4	1:3	1:2	1:1		
23016ADL	6 Apr 23 - 10 Apr 23	5	✈️	\$3,611	\$3,580	\$4,405	\$4,803	\$5,200	\$6,319	POA	SA
23016BNE	4 Apr 23 - 11 Apr 23	8	✈️	\$6,660	\$6,603	\$8,125	\$8,858	\$9,590	\$11,655	POA	SA
23016CBR	4 Apr 23 - 11 Apr 23	8	✈️	\$6,486	\$6,431	\$7,913	\$8,626	\$9,340	\$11,351	POA	SA
23016DRW	4 Apr 23 - 11 Apr 23	8	✈️	\$7,356	\$7,293	\$8,974	\$9,783	\$10,593	\$12,873	POA	SA
23016HBA	4 Apr 23 - 11 Apr 23	8	✈️	\$6,443	\$6,388	\$7,860	\$8,569	\$9,278	\$11,275	POA	SA
23016MEL	5 Apr 23 - 11 Apr 23	7	✈️	\$5,116	\$5,073	\$6,242	\$6,804	\$7,367	\$8,953	POA	SA
23016PER	4 Apr 23 - 11 Apr 23	8	✈️	\$7,052	\$6,992	\$8,603	\$9,379	\$10,155	\$12,341	POA	SA
23016SYD	4 Apr 23 - 11 Apr 23	8	✈️	\$6,407	\$6,353	\$7,817	\$8,521	\$9,226	\$11,212	POA	SA





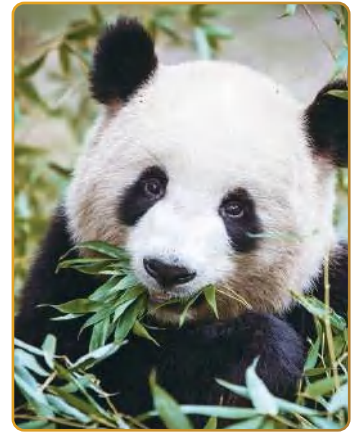


## 23042 ROYAL ADELAIDE SHOW

- Sit back & enjoy the scenic drive from Melbourne to Adelaide
- Join in with all the fun of the fair at the Royal Adelaide Show, with animals, rides, shows, there is something for everyone!
- Enjoy a day at the pretty beachside town of Glenelg, have some fun at The Beachouse, with mini-golf, rides & more.
- Reach out to all the animals, great & small, including the Giant Pandas, at the wonderful Adelaide Zoo.
- Relax in the Adelaide Botanic Gardens with a lovely picnic.
- Wander the expansive plains at the Monarto Open-range Zoo.

DEPART	DATE	DAYS	TRANSPORT	PRICING						WHEELIES	STATE
				1:5	Members 1:5	1:4	1:3	1:2	1:1		
23042ADL	2 Sep 23 - 6 Sep 23	5	🚐	\$4,430	\$4,392	\$5,405	\$5,892	\$6,379	\$7,753	POA	SA
23042BNE	31 Aug 23 - 7 Sep 23	8	✈️	\$6,233	\$6,180	\$7,604	\$8,290	\$8,976	\$10,908	POA	SA
23042CBR	31 Aug 23 - 7 Sep 23	8	✈️	\$6,059	\$6,007	\$7,392	\$8,058	\$8,725	\$10,603	POA	SA
23042DRW	31 Aug 23 - 7 Sep 23	8	✈️	\$6,929	\$6,870	\$8,453	\$9,216	\$9,978	\$12,126	POA	SA
23042HBA	31 Aug 23 - 7 Sep 23	8	✈️	\$6,088	\$6,036	\$7,427	\$8,097	\$8,767	\$10,654	POA	SA
23042MEL	1 Aug 23 - 7 Sep 23	7	🚐	\$5,091	\$5,048	\$6,211	\$6,771	\$7,331	\$8,909	POA	SA
23042PER	31 Aug 23 - 7 Sep 23	8	✈️	\$6,625	\$6,569	\$8,083	\$8,811	\$9,540	\$11,594	POA	SA
23042SYD	31 Aug 23 - 7 Sep 23	8	✈️	\$6,045	\$5,994	\$7,375	\$8,040	\$8,705	\$10,579	POA	SA

Updated pricelist are on page 29 to 36.



## 23052 ARKAROLA 4WD EXPERIENCE

- Let's begin our 4WD adventure at the inland city of Mildura as we head into the SA outback.
- Enjoy local Aboriginal culture & spectacular photo opportunities along the way.
- Take in the stunning geological outcrops, rugged mountains, mysterious gorges & waterholes of the Arkaroola region.
- Get off the beaten track in our 4WD's to capture sight of the various native wildlife including the unique Yellow Foot Rock Wallaby.
- Explore the township of Blinman with a town tour, sample the ice-cream at the Prairie Hotel in Parachilna enjoy & the local hospitality of Orroroo.



DEPART	DATE	DAYS	TRANSPORT	PRICING						WHEELIES	STATE
				1:5	Members 1:5	1:4	1:3	1:2	1:1		
23052ADL	31 Oct 23 - 8 Nov 23	9	✈️ 🚐	\$7,382	\$7,319	\$9,006	\$9,818	\$10,630	\$12,919	POA	SA
23052BNE	31 Oct 23 - 8 Nov 23	9	✈️ 🚐	\$7,701	\$7,636	\$9,395	\$10,242	\$11,089	\$13,477	POA	SA
23052CBR	31 Oct 23 - 8 Nov 23	9	✈️ 🚐	\$7,484	\$7,420	\$9,130	\$9,954	\$10,777	\$13,097	POA	SA
23052DRW	31 Oct 23 - 8 Nov 23	9	✈️ 🚐	\$8,238	\$8,168	\$10,050	\$10,957	\$11,863	\$14,417	POA	SA
23052HBA	31 Oct 23 - 8 Nov 23	9	✈️ 🚐	\$7,484	\$7,420	\$9,130	\$9,954	\$10,777	\$13,097	POA	SA
23052MEL	1 Nov 23 - 8 Nov 23	8	🚐	\$5,998	\$5,947	\$7,318	\$7,977	\$8,637	\$10,497	POA	SA
23052PER	31 Oct 23 - 8 Nov 23	9	✈️ 🚐	\$7,933	\$7,866	\$9,678	\$10,551	\$11,424	\$13,883	POA	SA
23052SYD	31 Oct 23 - 8 Nov 23	9	✈️ 🚐	\$7,440	\$7,377	\$9,077	\$9,895	\$10,714	\$13,020	POA	SA

Updated pricelist are on page 29 to 36.





## 23010 DELICIOUS DISCOVERIES

- Sit back & relax as we enjoy the journey over to Launceston aboard the Spirit of Tasmania.
- Learn the art of chocolate making tour & enjoy some delectable tastings at Anvers Chocolates.
- Feast on fine cheese & fresh raspberries at Ashgrove Cheese & Christmas Hill Raspberry Farm.
- Immerse yourself in the life of the mysterious Seahorse & the shy Platypus at Seahorse World & Platypus House.
- Set sail as we hop aboard the Brig Tamar & head across the lagoon, we can even fire the cannon!
- A fun day awaits as we visit Tasmania Zoo, set in the pretty Tamar Valley.
- Take in some history at the Queen Victoria Museum Inveresk & the Launceston Railway Museum.



DEPART	DATE	DAYS	TRANSPORT	PRICING						WHEELIES	STATE
				1:5	Members 1:5	1:4	1:3	1:2	1:1		
23010ADL	21 Feb 23 - 28 Feb 23	8	✈️	\$7,355	\$7,292	\$8,973	\$9,782	\$10,591	\$12,871	POA	TAS
23010BNE	21 Feb 23 - 28 Feb 23	8	✈️	\$7,645	\$7,580	\$9,327	\$10,168	\$11,009	\$13,379	POA	TAS
23010CBR	21 Feb 23 - 28 Feb 23	8	✈️	\$7,471	\$7,407	\$9,115	\$9,936	\$10,758	\$13,074	POA	TAS
23010DRW	21 Feb 23 - 28 Feb 23	8	✈️	\$8,341	\$8,270	\$10,176	\$11,094	\$12,011	\$14,597	POA	TAS
23010HBA	21 Feb 23 - 28 Feb 23	8	✈️	\$7,427	\$7,364	\$9,061	\$9,878	\$10,695	\$12,997	POA	TAS
23010MEL	21 Feb 23 - 28 Feb 23	8	✈️	\$6,862	\$6,804	\$8,372	\$9,126	\$9,881	\$12,009	POA	TAS
23010PER	21 Feb 23 - 28 Feb 23	8	✈️	\$8,036	\$7,968	\$9,804	\$10,688	\$11,572	\$14,063	POA	TAS
23010SYD	21 Feb 23 - 28 Feb 23	8	✈️	\$7,391	\$7,328	\$9,017	\$9,830	\$10,643	\$12,934	POA	TAS

## 23048 STRAHAN & THE WEST COAST

- Enjoy the sailing experience on the Spirit of Tasmania.
- Immerse yourself the history of the local Indigenous communities at the Tiagarra Aboriginal Culture Centre and Museum.
- Get set for some fun at the quirky Tasmazia, with mazes aplenty, a whimsical model village, gardens & gift shop.
- All aboard as we hop on the West Coast Wilderness Railway ride, enjoy the stunning views through rainforest & gorges.
- Feast on a delicious lunch as we cruise along the Gordon River.
- Discover Devils @ Cradle with a wonderful, guided tour & get close up with the Tasmanian Devil.



DEPART	DATE	DAYS	TRANSPORT	PRICING						WHEELIES	STATE
				1:5	Members 1:5	1:4	1:3	1:2	1:1		
23048ADL	12 Oct 23 - 18 Oct 23	7	✈️	\$7,932	\$7,865	\$9,677	\$10,550	\$11,422	\$13,881	POA	TAS
23048BNE	12 Oct 23 - 18 Oct 23	7	✈️	\$8,091	\$8,022	\$9,871	\$10,761	\$11,651	\$14,159	POA	TAS
23048CBR	12 Oct 23 - 18 Oct 23	7	✈️	\$7,917	\$7,850	\$9,659	\$10,530	\$11,400	\$13,855	POA	TAS
23048DRW	12 Oct 23 - 18 Oct 23	7	✈️	\$8,787	\$8,712	\$10,720	\$11,687	\$12,653	\$15,377	POA	TAS
23048HBA	12 Oct 23 - 18 Oct 23	7	✈️	\$7,874	\$7,807	\$9,606	\$10,472	\$11,339	\$13,780	POA	TAS
23048MEL	12 Oct 23 - 18 Oct 23	7	✈️	\$7,308	\$7,246	\$8,916	\$9,720	\$10,524	\$12,789	POA	TAS
23048PER	12 Oct 23 - 18 Oct 23	7	✈️	\$8,483	\$8,411	\$10,349	\$11,282	\$12,216	\$14,845	POA	TAS
23048SYD	12 Oct 23 - 18 Oct 23	7	✈️	\$7,838	\$7,771	\$9,562	\$10,425	\$11,287	\$13,717	POA	TAS

Updated pricelist are on page 29 to 36.



## 23056 TALL SHIP SAILING IN HOBART

- Enjoy a fascinating & informative day at Port Arthur Historic Site, an important part of Australian history.
- Walk through the stunning Royal Tasmania Botanical Gardens and enjoy the history and heritage.
- Soak up the wonderful vibe at the iconic Salamanca Markets, where bountiful treasures await.
- Relax & enjoy a stunning harbour tour upon the tall ship Lady Nelson followed by a visit to the Maritime Museum.
- Get hands on with the animals of the Bonorong Wildlife Sanctuary.
- Step back in time as in a transport sense as we explore the Tasmanian Transport Museum.



DEPART	DATE	DAYS	TRANSPORT	PRICING						WHEELIES	STATE
				1:5	Members 1:5	1:4	1:3	1:2	1:1		
23056ADL	21 Nov 23 - 28 Nov 23	5	✈️	\$8,461	\$8,389	\$10,322	\$11,253	\$12,184	\$14,807	POA	QLD
23056BNE	21 Nov 23 - 28 Nov 23	8	✈️	\$8,621	\$8,548	\$10,518	\$11,466	\$12,414	\$15,087	POA	QLD
23056CBR	21 Nov 23 - 28 Nov 23	8	✈️	\$8,447	\$8,375	\$10,305	\$11,235	\$12,164	\$14,782	POA	QLD
23056DRW	21 Nov 23 - 28 Nov 23	8	✈️	\$9,317	\$9,238	\$11,367	\$12,392	\$13,416	\$16,305	POA	QLD
23056HBA	23 Nov 23 - 27 Nov 23	8	✈️	\$4,764	\$4,724	\$5,812	\$6,336	\$6,860	\$8,337	POA	QLD
23056MEL	21 Nov 23 - 28 Nov 23	7	✈️	\$7,838	\$7,771	\$9,562	\$10,425	\$11,287	\$13,717	POA	QLD
23056PER	21 Nov 23 - 28 Nov 23	8	✈️	\$9,012	\$8,935	\$10,995	\$11,986	\$12,977	\$15,771	POA	QLD
23056SYD	21 Nov 23 - 28 Nov 23	8	✈️	\$8,367	\$8,296	\$10,208	\$11,128	\$12,048	\$14,642	POA	QLD

Updated pricelist are on page 29 to 36.

## 23031 CABLE BEACH CAMELS

- Prepare for an adventure at the Malcolm Douglas Crocodile Park & Animal Refuge.
- Journey along the stunning coastline on Camelback.
- Enjoy the hustle & bustle of the vibrant Courthouse Markets.
- Learn how to shuck a glistening pearl at Willie Creek Pearl Farm.
- Search for Dolphins & other sea life at Roebuck Bay, pick a winner at the Crazy Crab Race!
- Immerse yourself in the local history at the Broome Historical Museum.



DEPART	DATE	DAYS	TRANSPORT	PRICING						WHEELIES	STATE
				1:5	Members 1:5	1:4	1:3	1:2	1:1		
23031ADL	29 Jun 23 - 5 July 23	7	✈	\$9,889	\$9,805	\$12,065	\$13,152	\$14,240	\$17,306	POA	TAS
23031BNE	29 Jun 23 - 5 July 23	7	✈	\$10,353	\$10,265	\$12,631	\$13,769	\$14,908	\$18,118	POA	TAS
23031CBR	29 Jun 23 - 5 July 23	7	✈	\$10,786	\$10,694	\$13,159	\$14,345	\$15,532	\$18,876	POA	TAS
23031DRW	29 Jun 23 - 5 July 23	7	✈	\$10,156	\$10,070	\$12,390	\$13,507	\$14,625	\$17,773	POA	TAS
23031HBA	29 Jun 23 - 5 July 23	7	✈	\$10,643	\$10,553	\$12,984	\$14,155	\$15,326	\$18,625	POA	TAS
23031MEL	29 Jun 23 - 5 July 23	7	✈	\$9,918	\$9,834	\$12,100	\$13,191	\$14,282	\$17,357	POA	TAS
23031PER	29 Jun 23 - 5 July 23	7	✈	\$9,164	\$9,086	\$11,180	\$12,188	\$13,196	\$16,037	POA	TAS
23031SYD	29 Jun 23 - 5 July 23	7	✈	\$10,142	\$10,056	\$12,373	\$13,489	\$14,604	\$17,749	POA	TAS

Updated pricelist are on page 29 to 36.



## 23038 PERTH ON THE INDIAN PACIFIC

- All aboard The Indian Pacific for a journey of a lifetime.
- Relax as we pass through the magnificent scenery of the Blue Mountains & Flinders Ranges.
- Disembark for day excursions at Broken Hill & Adelaide Hills.
- Cruise across the Nullarbor & explore the abandoned railway town of Cook.
- Take a wonderful tour around Perth & a cruise over to Fremantle.
- Meet the adorable Quokkas when we head over to Rottnest Island.



DEPART	DATE	DAYS	TRANSPORT	PRICING						WHEELIES	STATE
				1:5	Members 1:5	1:4	1:3	1:2	1:1		
23038ADL	9 Aug 23 - 16 Aug 23	8	✈	\$10,252	\$10,165	\$12,507	\$13,635	\$14,763	\$17,941	POA	TAS
23038BNE	9 Aug 23 - 16 Aug 23	8	✈	\$10,274	\$10,187	\$12,534	\$13,664	\$14,795	\$17,980	POA	TAS
23038CBR	9 Aug 23 - 16 Aug 23	8	✈	\$10,416	\$10,327	\$12,708	\$13,853	\$14,999	\$18,228	POA	TAS
23038DRW	9 Aug 23 - 16 Aug 23	8	✈	\$10,781	\$10,689	\$13,153	\$14,339	\$15,525	\$18,867	POA	TAS
23038HBA	9 Aug 23 - 16 Aug 23	8	✈	\$10,517	\$10,428	\$12,831	\$13,988	\$15,144	\$18,405	POA	TAS
23038MEL	9 Aug 23 - 16 Aug 23	8	✈	\$10,230	\$10,143	\$12,481	\$13,606	\$14,731	\$17,903	POA	TAS
23038PER	9 Aug 23 - 16 Aug 23	8	✈	\$10,020	\$9,935	\$12,224	\$13,327	\$14,429	\$17,535	POA	TAS
23038SYD	9 Aug 23 - 16 Aug 23	8	✈	\$10,005	\$9,920	\$12,206	\$13,307	\$14,407	\$17,509	POA	TAS

Updated pricelist are on page 29 to 36.

## 23053 ESPERANCE

- Travel through time to the little town of Esperance as we explore the different historical sites.
- Built in 2011 to align with the Summer and Winter solstices, a Stonehenge replica is a must visit!
- Sit back for an awesome joyride of the Great Ocean Drive and appreciate the coastal beauty of Esperance.
- Discover the magical wilderness of Esperance as we visit the Esperance Bird & Animal park and enjoy an island cruise.
- Discover the breathtaking Cape Le Grand National Park & explore the white sandy beaches and calm waters.



DEPART	DATE	DAYS	TRANSPORT	PRICING						WHEELIES	STATE
				1:5	Members 1:5	1:4	1:3	1:2	1:1		
23053ADL	2 Nov 23 - 8 Nov 23	7	✈	\$7,284	\$7,222	\$8,886	\$9,688	\$10,489	\$12,747	POA	QLD
23053BNE	2 Nov 23 - 8 Nov 23	7	✈	\$7,569	\$7,505	\$9,234	\$10,067	\$10,899	\$13,246	POA	QLD
23053CBR	2 Nov 23 - 8 Nov 23	7	✈	\$8,149	\$8,080	\$9,942	\$10,838	\$11,735	\$14,261	POA	QLD
23053DRW	2 Nov 23 - 8 Nov 23	7	✈	\$7,787	\$7,721	\$9,500	\$10,357	\$11,213	\$13,627	POA	QLD
23053HBA	2 Nov 23 - 8 Nov 23	7	✈	\$7,456	\$7,393	\$9,096	\$9,916	\$10,737	\$13,048	POA	QLD
23053MEL	2 Nov 23 - 8 Nov 23	7	✈	\$7,335	\$7,273	\$8,949	\$9,756	\$10,562	\$12,836	POA	QLD
23053PER	2 Nov 23 - 8 Nov 23	7	✈	\$6,032	\$5,981	\$7,359	\$8,023	\$8,686	\$10,556	POA	QLD
23053SYD	2 Nov 23 - 8 Nov 23	7	✈	\$7,229	\$7,168	\$8,819	\$9,615	\$10,410	\$12,651	POA	QLD

Updated pricelist are on page 29 to 36.







## 23022 THAT FIJI TASTE

- Sit back and relax on a discover Nadi tour taking in the Garden of the Sleeping Giant and visit the landing site of the first Fijians.
- Spend the day on Cloud 9, Fiji's 2-level floating platform surrounded by blue ocean waters.
- Discover Nadi and surrounds as we visit the Garden on the Sleeping Giant, the largest Hindu temple in the South Pacific and shop at the Nadi Market.
- Step back in time and enjoy an authentic Village Tour which concludes with a traditional Fijian lunch.
- Partake in the traditional 'sevusevu' welcoming ceremony inside a Fijian 'bure'.
- Learn the cuisine and cooking techniques of the Fijian culture at a cooking school.



DEPART	DATE	DAYS	TRANSPORT	PRICING						WHEELIES	STATE
				1:5	Members 1:5	1:4	1:3	1:2	1:1		
23022ADL	2 May 23 - 8 May 23	7	✗	\$8,558	\$8,485	\$10,441	\$11,382	\$12,324	\$14,977	POA	INT
23022BNE	2 May 23 - 8 May 23	7	✗	\$8,109	\$8,040	\$9,893	\$10,785	\$11,677	\$14,191	POA	INT
23022CBR	2 May 23 - 8 May 23	7	✗	\$8,273	\$8,203	\$10,093	\$11,003	\$11,913	\$14,478	POA	INT
23022DRW	2 May 23 - 8 May 23	7	✗	\$8,980	\$8,904	\$10,956	\$11,943	\$12,931	\$15,715	POA	INT
23022HBA	2 May 23 - 8 May 23	7	✗	\$8,322	\$8,251	\$10,153	\$11,068	\$11,984	\$14,564	POA	INT
23022MEL	2 May 23 - 8 May 23	7	✗	\$8,432	\$8,360	\$10,287	\$11,215	\$12,142	\$14,756	POA	INT
23022PER	2 May 23 - 8 May 23	7	✗	\$8,992	\$8,916	\$10,970	\$11,959	\$12,948	\$15,736	POA	INT
23022SYD	2 May 23 - 8 May 23	7	✗	\$8,012	\$7,944	\$9,775	\$10,656	\$11,537	\$14,021	POA	INT

Updated pricelist are on page 29 to 36.



## 23051 BAY OF ISLANDS

- Travel from Auckland to Paihia via the beautiful Hibiscus Coast Highway and visit Red Beach.
- Cruise around the Bay of Islands in search of dolphins and other marine life.
- Stop at the picturesque Urupukapuka Island, visit the famous Hole in the Rock and explore Russell.
- Pick up some wonderful local crafts and souvenirs as we enjoy shopping in Paihia.
- Experience a traditional Maori welcome, enjoy a Hangi and then sit back and relax as we enjoy a powerful Maori concert.
- See the Kiwi foraging for food, enjoy a picnic and explore the unique heritage buildings at Kiwi North.

DEPART	DATE	DAYS	TRANSPORT	PRICING						WHEELIES	STATE
				1:5	Members 1:5	1:4	1:3	1:2	1:1		
23051ADL	30 Oct 23 - 5 Nov 23	7	✗	\$7,962	\$7,894	\$9,714	\$10,589	\$11,465	\$13,934	POA	INT
23051BNE	30 Oct 23 - 5 Nov 23	7	✗	\$7,741	\$7,675	\$9,444	\$10,296	\$11,147	\$13,547	POA	INT
23051CBR	30 Oct 23 - 5 Nov 23	7	✗	\$7,722	\$7,656	\$9,421	\$10,270	\$11,120	\$13,514	POA	INT
23051DRW	30 Oct 23 - 5 Nov 23	7	✗	\$8,624	\$8,551	\$10,521	\$11,470	\$12,419	\$15,092	POA	INT
23051HBA	30 Oct 23 - 5 Nov 23	7	✗	\$7,962	\$7,894	\$9,714	\$10,589	\$11,465	\$13,934	POA	INT
23051MEL	30 Oct 23 - 5 Nov 23	7	✗	\$7,469	\$7,406	\$9,112	\$9,934	\$10,755	\$13,071	POA	INT
23051PER	30 Oct 23 - 5 Nov 23	7	✗	\$8,512	\$8,440	\$10,385	\$11,321	\$12,257	\$14,896	POA	INT
23051SYD	30 Oct 23 - 5 Nov 23	7	✗	\$7,710	\$7,644	\$9,406	\$10,254	\$11,102	\$13,493	POA	INT

Updated pricelist are on page 29 to 36.



## 23006 COMEDY CRUISE

- Get ready for non-stop laughs as we sail from Melbourne.
- Enjoy the many wonderful amenities aboard our luxury ship.
- Join in the activities, watch the ice & fruit carving or just sit back & relax.
- Dress up to the nines & head out for some delicious dining experiences.
- Hold on to your sides as we enjoy the hilarious comedy shows on offer.



DEPART	DATE	DAYS	TRANSPORT	PRICING						WHEELIES	STATE
				1:5	Members 1:5	1:4	1:3	1:2	1:1		
23006ADL	21 Jun 23 - 24 Jun 23	4	✈️ 🍷	\$3,501	\$3,471	\$4,271	\$4,656	\$5,041	\$6,127	POA	CRU
23006BNE	21 Jun 23 - 24 Jun 23	4	✈️ 🍷	\$3,341	\$3,313	\$4,076	\$4,444	\$4,811	\$5,847	POA	CRU
23006CBR	21 Jun 23 - 24 Jun 23	4	✈️ 🍷	\$3,573	\$3,543	\$4,359	\$4,752	\$5,145	\$6,253	POA	CRU
23006DRW	21 Jun 23 - 24 Jun 23	4	✈️ 🍷	\$3,791	\$3,759	\$4,625	\$5,042	\$5,459	\$6,634	POA	CRU
23006HBA	21 Jun 23 - 24 Jun 23	4	✈️ 🍷	\$3,602	\$3,571	\$4,394	\$4,791	\$5,187	\$6,304	POA	CRU
23006MEL	21 Jun 23 - 24 Jun 23	4	✈️ 🍷	\$3,356	\$3,327	\$4,094	\$4,463	\$4,833	\$5,873	POA	CRU
23006PER	21 Jun 23 - 24 Jun 23	4	✈️ 🍷	\$4,008	\$3,974	\$4,890	\$5,331	\$5,772	\$7,014	POA	CRU
23006SYD	21 Jun 23 - 24 Jun 23	4	✈️ 🍷	\$2,776	\$2,752	\$3,387	\$3,692	\$3,997	\$4,858	POA	CRU

Updated pricelist on page 29 to 36.



## 23008 DISCO CRUISE

- Saturday Night Fever is every night on the Disco cruise!
- Show off your dancing skills as we hit the dance floor, enjoying hit after hit.
- When you need a rest from the dance floor there are many activities to enjoy or just sit back & relax if you please.
- Refuel with a large variety of delicious dining options.
- Enjoy a Yoga class to stretch out your body after all your dancing the night before or take a dip in the huge pool.



DEPART	DATE	DAYS	TRANSPORT	PRICING						WHEELIES	STATE
				1:5	Members 1:5	1:4	1:3	1:2	1:1		
23008ADL	10 Feb 23 - 13 Feb 23	4	✈️ 🍷	\$3,524	\$3,494	\$4,299	\$4,687	\$5,075	\$6,167	POA	CRU
23008BNE	10 Feb 23 - 13 Feb 23	4	✈️ 🍷	\$3,698	\$3,667	\$4,512	\$4,918	\$5,325	\$6,472	POA	CRU
23008CBR	10 Feb 23 - 13 Feb 23	4	✈️ 🍷	\$3,727	\$3,695	\$4,547	\$4,957	\$5,367	\$6,522	POA	CRU
23008DRW	10 Feb 23 - 13 Feb 23	4	✈️ 🍷	\$4,133	\$4,098	\$5,042	\$5,497	\$5,952	\$7,233	POA	CRU
23008HBA	10 Feb 23 - 13 Feb 23	4	✈️ 🍷	\$3,625	\$3,594	\$4,423	\$4,821	\$5,220	\$6,344	POA	CRU
23008MEL	10 Feb 23 - 13 Feb 23	4	✈️ 🍷	\$2,944	\$2,919	\$3,592	\$3,916	\$4,239	\$5,152	POA	CRU
23008PER	10 Feb 23 - 13 Feb 23	4	✈️ 🍷	\$4,452	\$4,414	\$5,431	\$5,921	\$6,411	\$7,791	POA	CRU
23008SYD	10 Feb 23 - 13 Feb 23	4	✈️ 🍷	\$3,538	\$3,508	\$4,316	\$4,706	\$5,095	\$6,192	POA	CRU

## 23009 CRUISE & ZOO'S

- Explore the luxurious ship as we first make sail to Burnie Tasmania.
- Join the many games & activities available onboard.
- Enjoy a visit to the historic Burnie Regional Museum.
- As we sail into Adelaide, we make a visit to Adelaide Zoo to meet all the residents big & small.
- Wander the quaint streets in the village of Hahndorf & pick up some bespoke souvenirs.
- Experience a spectacular day at the massive Monarto open-range Zoo.



DEPART	DATE	DAYS	TRANSPORT	PRICING						WHEELIES	STATE
				1:5	Members 1:5	1:4	1:3	1:2	1:1		
23009ADL	17 Feb 23 - 20 Feb 23	4	✈️ 🍷	\$3,770	\$3,738	\$4,599	\$5,014	\$5,429	\$6,598	POA	CRU
23009BNE	17 Feb 23 - 22 Feb 23	6	✈️ 🍷	\$5,249	\$5,204	\$6,404	\$6,981	\$7,559	\$9,186	POA	CRU
23009CBR	17 Feb 23 - 22 Feb 23	6	✈️ 🍷	\$5,278	\$5,233	\$6,439	\$7,020	\$7,600	\$9,237	POA	CRU
23009DRW	17 Feb 23 - 22 Feb 23	6	✈️ 🍷	\$5,684	\$5,636	\$6,934	\$7,560	\$8,185	\$9,947	POA	CRU
23009HBA	17 Feb 23 - 22 Feb 23	6	✈️ 🍷	\$5,177	\$5,133	\$6,316	\$6,885	\$7,455	\$9,060	POA	CRU
23009MEL	17 Feb 23 - 22 Feb 23	6	✈️ 🍷	\$4,495	\$4,457	\$5,484	\$5,978	\$6,473	\$7,866	POA	CRU
23009PER	17 Feb 23 - 22 Feb 23	6	✈️ 🍷	\$6,003	\$5,952	\$7,324	\$7,984	\$8,644	\$10,505	POA	CRU
23009SYD	17 Feb 23 - 22 Feb 23	6	✈️ 🍷	\$5,104	\$5,061	\$6,227	\$6,788	\$7,350	\$8,932	POA	CRU







## 23015 SA CRUISE

- Step on board & enjoy the 'Sail Away' party as we sail out from Adelaide.
- Enjoy a day exploring the beautiful Port Lincoln area.
- Choose from the numerous activities & entertainment options on our luxurious ship.
- Feast on the many delicious dining options.
- Disembark at Kangaroo Island for a wonderful day at the Kangaroo Island Wildlife Park.



DEPART	DATE	DAYS	TRANSPORT	PRICING						WHEELIES	STATE
				1:5	Members 1:5	1:4	1:3	1:2	1:1		
23015ADL	27 Mar 23 - 31 Mar 23	5	🏠	\$3,727	\$3,695	\$4,547	\$4,957	\$5,367	\$6,522	POA	CRU
23015BNE	27 Mar 23 - 31 Mar 23	5	✈️ 🏠	\$4,706	\$4,666	\$5,741	\$6,259	\$6,777	\$8,236	POA	CRU
23015CBR	27 Mar 23 - 31 Mar 23	5	✈️ 🏠	\$4,735	\$4,695	\$5,777	\$6,298	\$6,818	\$8,286	POA	CRU
23015DRW	27 Mar 23 - 31 Mar 23	5	✈️ 🏠	\$5,141	\$5,097	\$6,272	\$6,838	\$7,403	\$8,997	POA	CRU
23015HBA	27 Mar 23 - 31 Mar 23	5	✈️ 🏠	\$4,633	\$4,594	\$5,652	\$6,162	\$6,672	\$8,108	POA	CRU
23015MEL	27 Mar 23 - 31 Mar 23	5	✈️ 🏠	\$4,604	\$4,565	\$5,617	\$6,123	\$6,630	\$8,057	POA	CRU
23015PER	27 Mar 23 - 31 Mar 23	5	✈️ 🏠	\$5,460	\$5,414	\$6,661	\$7,262	\$7,862	\$9,555	POA	CRU
23015SYD	27 Mar 23 - 31 Mar 23	5	✈️ 🏠	\$4,546	\$4,507	\$5,546	\$6,046	\$6,546	\$7,956	POA	CRU

## 23026 FAR NORTH QLD CRUISE

- Breathe in the balmy sea air as we sail out from Brisbane with a 'Sail Away' party.
- Hot tub, pool, ping pong? We will be spoiled for choice on this cruise.
- Wander the wonderful markets as we disembark at tropical Airlie Beach.
- Explore all that Cairns has on offer & finish with a dip in the refreshing lagoon.
- Take in the magnificent scenery as we journey through the heritage listed rainforest on the Kuranda Train.
- Relax on a scenic cruise around Willis Island, home of the Australian Bureau of Meteorology.



DEPART	DATE	DAYS	TRANSPORT	PRICING						WHEELIES	STATE
				1:5	Members 1:5	1:4	1:3	1:2	1:1		
23026ADL	27 May 23 - 3 Jun 23	8	✈️ 🏠	\$6,453	\$6,398	\$7,873	\$8,582	\$9,292	\$11,293	POA	CRU
23026BNE	27 May 23 - 3 Jun 23	8	🏠	\$5,622	\$5,574	\$6,859	\$7,477	\$8,096	\$9,839	POA	CRU
23026CBR	27 May 23 - 3 Jun 23	8	✈️ 🏠	\$6,456	\$6,401	\$7,876	\$8,586	\$9,297	\$11,298	POA	CRU
23026DRW	27 May 23 - 3 Jun 23	8	✈️ 🏠	\$7,065	\$7,005	\$8,619	\$9,396	\$10,174	\$12,364	POA	CRU
23026HBA	27 May 23 - 3 Jun 23	8	✈️ 🏠	\$6,691	\$6,634	\$8,163	\$8,899	\$9,635	\$11,709	POA	CRU
23026MEL	27 May 23 - 3 Jun 23	8	✈️ 🏠	\$6,520	\$6,465	\$7,954	\$8,672	\$9,389	\$11,410	POA	CRU
23026PER	27 May 23 - 3 Jun 23	8	✈️ 🏠	\$6,876	\$6,818	\$8,389	\$9,145	\$9,901	\$12,033	POA	CRU
23026SYD	27 May 23 - 3 Jun 23	8	✈️ 🏠	\$6,308	\$6,254	\$7,696	\$8,390	\$9,084	\$11,039	POA	CRU

Updated pricelist are on page 29 to 36.



## 23032 SOUTH PACIFIC CRUISE

- Enjoy the fun of the 'Sail Away' party as we head towards the South Pacific.
- Whilst at sea take part in the many activities onboard or just sit back, relax or swim the days away.
- Explore the pristine waters of the Isle of Pines with swimming & snorkeling.
- Soak in the vibe at the local markets of Mare.
- All aboard the Tchou Tchou Train as we enjoy the sights of Noumea.
- Feast upon the wonderful dining selections & enjoy the nightly entertainment.



DEPART	DATE	DAYS	TRANSPORT	PRICING						WHEELIES	STATE
				1:5	Members 1:5	1:4	1:3	1:2	1:1		
23032ADL	30 Jun 23 - 8 Jul 23	9	✈️ 🏠	\$6,634	\$6,578	\$8,093	\$8,823	\$9,553	\$11,610	POA	CRU
23032BNE	30 Jun 23 - 8 Jul 23	9	✈️ 🏠	\$6,475	\$6,420	\$7,900	\$8,612	\$9,324	\$11,331	POA	CRU
23032CBR	30 Jun 23 - 8 Jul 23	9	✈️ 🏠	\$6,707	\$6,650	\$8,183	\$8,920	\$9,658	\$11,737	POA	CRU
23032DRW	30 Jun 23 - 8 Jul 23	9	✈️ 🏠	\$6,924	\$6,865	\$8,447	\$9,209	\$9,971	\$12,117	POA	CRU
23032HBA	30 Jun 23 - 8 Jul 23	9	✈️ 🏠	\$6,736	\$6,679	\$8,218	\$8,959	\$9,700	\$11,788	POA	CRU
23032MEL	30 Jun 23 - 8 Jul 23	9	✈️ 🏠	\$6,489	\$6,434	\$7,917	\$8,630	\$9,344	\$11,356	POA	CRU
23032PER	30 Jun 23 - 8 Jul 23	9	✈️ 🏠	\$7,142	\$7,081	\$8,713	\$9,499	\$10,284	\$12,499	POA	CRU
23032SYD	30 Jun 23 - 8 Jul 23	9	🏠	\$5,909	\$5,859	\$7,209	\$7,859	\$8,509	\$10,341	POA	CRU

Updated pricelist are on page 29 to 36.

## 23041 MORETON ISLAND CRUISE

- Wave goodbye as we dance & sing at the sail away party from Sydney.
- Take advantage of all the wonderful activities on board as we head towards Moreton Island.
- Enjoy some delicious dining options & follow with an entertaining nightly show.
- Explore the small island paradise that is Moreton Island with a great onshore adventure.
- Heading back to Sydney enjoy your time with ship games, swimming & relaxing.



DEPART	DATE	DAYS	TRANSPORT	PRICING						WHEELIES	STATE
				1:5	Members 1:5	1:4	1:3	1:2	1:1		
23041ADL	31 Aug 23 - 4 Sep 23	5	✈️ 📦	\$4,104	\$4,069	\$5,007	\$5,458	\$5,910	\$7,182	POA	CRU
23041BNE	31 Aug 23 - 4 Sep 23	5	✈️ 📦	\$3,944	\$3,910	\$4,812	\$5,246	\$5,679	\$6,902	POA	CRU
23041CBB	31 Aug 23 - 4 Sep 23	5	✈️ 📦	\$4,176	\$4,141	\$5,095	\$5,554	\$6,013	\$7,308	POA	CRU
23041DRW	31 Aug 23 - 4 Sep 23	5	✈️ 📦	\$4,394	\$4,357	\$5,361	\$5,844	\$6,327	\$7,690	POA	CRU
23041HBA	31 Aug 23 - 4 Sep 23	5	✈️ 📦	\$4,205	\$4,169	\$5,130	\$5,593	\$6,055	\$7,359	POA	CRU
23041MEL	31 Aug 23 - 4 Sep 23	5	✈️ 📦	\$3,959	\$3,925	\$4,830	\$5,265	\$5,701	\$6,928	POA	CRU
23041PER	31 Aug 23 - 4 Sep 23	5	✈️ 📦	\$4,611	\$4,572	\$5,625	\$6,133	\$6,640	\$8,069	POA	CRU
23041SYD	31 Aug 23 - 4 Sep 23	5	📦	\$3,379	\$3,350	\$4,122	\$4,494	\$4,866	\$5,913	POA	CRU

Updated pricelist are on page 29 to 36.



## 23049 QUEENSLAND CRUISE

- Set sail and enjoy the cruise away party as we make our way North.
- Docking at the gateway to the Whitsunday's- Airlie Beach, we enjoy the markets, bespoke shops & inviting beaches.
- Disembarking in Cairns we explore the tropical Cairns Botanic Gardens & shop the wonderful night markets.
- Explore the stunning Rainforestation Nature Park on our stop in Port Douglas.
- Dress in your finest as we join the formal nights onboard with some delicious dining on offer & dancing to follow.
- Enjoy all the fun activities onboard the ship as we sail the tropical seas.



DEPART	DATE	DAYS	TRANSPORT	PRICING						WHEELIES	STATE
				1:5	Members 1:5	1:4	1:3	1:2	1:1		
23049ADL	13 Oct 23 - 20 Oct 23	8	✈️ 📦	\$5,484	\$5,437	\$6,690	\$7,294	\$7,897	\$9,597	POA	CRU
23049BNE	13 Oct 23 - 20 Oct 23	8	📦	\$4,690	\$4,650	\$5,722	\$6,238	\$6,754	\$8,208	POA	CRU
23049CBB	13 Oct 23 - 20 Oct 23	8	✈️ 📦	\$5,487	\$5,440	\$6,694	\$7,298	\$7,901	\$9,602	POA	CRU
23049DRW	13 Oct 23 - 20 Oct 23	8	✈️ 📦	\$6,096	\$6,044	\$7,437	\$8,108	\$8,778	\$10,668	POA	CRU
23049HBA	13 Oct 23 - 20 Oct 23	8	✈️ 📦	\$5,722	\$5,673	\$6,981	\$7,610	\$8,240	\$10,014	POA	CRU
23049MEL	13 Oct 23 - 20 Oct 23	8	✈️ 📦	\$5,371	\$5,325	\$6,553	\$7,143	\$7,734	\$9,399	POA	CRU
23049PER	13 Oct 23 - 20 Oct 23	8	✈️ 📦	\$5,908	\$5,858	\$7,208	\$7,858	\$8,508	\$10,339	POA	CRU
23049SYD	13 Oct 23 - 20 Oct 23	8	✈️ 📦	\$5,339	\$5,294	\$6,514	\$7,101	\$7,688	\$9,343	POA	CRU

Updated pricelist are on page 29 to 36.

## 23057 NZ TO AUST CRUISE

- Cruise the stunning waters of Hauraki Gulf Marine Park in search of Dolphins & Whales.
- Enjoy a day exploring wonderful Auckland & learning of Māori culture.
- Onboard our luxury ship, enjoy wining, dining & nightly cabaret shows.
- Join a game of ship trivia, some karaoke or sit back & watch the latest movie.
- Sit, sun, swim & watch the world sail by as we unwind on this wonderful cruise.



DEPART	DATE	DAYS	TRANSPORT	PRICING						WHEELIES	STATE
				1:5	Members 1:5	1:4	1:3	1:2	1:1		
23057ADL	27 Nov 23 - 4 Dec 23	8	✈️ 📦	\$6,713	\$6,656	\$8,190	\$8,928	\$9,667	\$11,748	POA	CRU
23057BNE	27 Nov 23 - 4 Dec 23	8	✈️ 📦	\$6,697	\$6,640	\$8,170	\$8,907	\$9,644	\$11,720	POA	CRU
23057CBB	27 Nov 23 - 4 Dec 23	8	✈️ 📦	\$6,771	\$6,713	\$8,261	\$9,005	\$9,750	\$11,849	POA	CRU
23057DRW	27 Nov 23 - 4 Dec 23	8	✈️ 📦	\$6,982	\$6,923	\$8,518	\$9,286	\$10,054	\$12,219	POA	CRU
23057HBA	27 Nov 23 - 4 Dec 23	8	✈️ 📦	\$6,781	\$6,723	\$8,273	\$9,019	\$9,765	\$11,867	POA	CRU
23057MEL	27 Nov 23 - 4 Dec 23	8	✈️ 📦	\$6,605	\$6,549	\$8,058	\$8,785	\$9,511	\$11,559	POA	CRU
23057PER	27 Nov 23 - 4 Dec 23	8	✈️ 📦	\$6,968	\$6,909	\$8,501	\$9,267	\$10,034	\$12,194	POA	CRU
23057SYD	27 Nov 23 - 4 Dec 23	8	✈️ 📦	\$6,656	\$6,599	\$8,120	\$8,852	\$9,585	\$11,648	POA	CRU

Updated pricelist are on page 29 to 36.





# Departure MELBOURNE

Tour Code	Tour Name	Start	End	Dest. State	1:5	1:5 Member	1:4	1:3	1:2	1:1
23018MEL	Cairns Attraction	13-Apr-23	19-Apr-23	QLD	\$7,386	\$7,323	\$9,011	\$9,823	\$10,636	\$12,926
23019MEL	Tea, Shopping & Pampering	14-Apr-23	23-Apr-23	QLD	\$7,264	\$7,202	\$8,862	\$9,661	\$10,460	\$12,712
23020MEL	Mountain Pampering	27-Apr-23	3-May-23	NSW	\$5,864	\$5,814	\$7,154	\$7,799	\$8,444	\$10,262
23021MEL	Binns Track 4WDiving	1-May-23	11-May-23	NT	\$11,896	\$11,795	\$14,513	\$15,822	\$17,130	\$20,818
23022MEL	That Fiji Taste	2-May-23	8-May-23	INT	\$8,945	\$8,869	\$10,913	\$11,897	\$12,881	\$15,654
23023MEL	Melbourne's AFL & More!	11-May-23	15-May-23	VIC	\$3,737	\$3,705	\$4,559	\$4,970	\$5,381	\$6,540
23024MEL	Dubbo Glamping	18-May-23	24-May-23	NSW	\$5,519	\$5,472	\$6,733	\$7,340	\$7,947	\$9,658
23025MEL	Warrnambool Wonders	26-May-23	30-May-23	VIC	\$3,672	\$3,641	\$4,480	\$4,884	\$5,288	\$6,341
23026MEL	Far North QLD Cruise	27-May-23	3-Jun-23	CRU	\$7,340	\$7,278	\$8,955	\$9,762	\$10,570	\$12,845
23027MEL	Eat, Play & Stay - Sunshine	1-Jun-23	10-Jun-23	QLD	\$7,430	\$7,367	\$9,065	\$9,882	\$10,699	\$13,003
23028MEL	Feel that NRL Roar!	8-Jun-23	12-Jun-23	QLD	\$5,507	\$5,460	\$6,719	\$7,324	\$7,930	\$9,637
23006MEL	Comedy Cruise	9-Jun-23	12-Jun-23	CRU	\$3,649	\$3,618	\$4,452	\$4,853	\$5,255	\$6,386
23029MEL	Gardens, Markets & Museums	14-Jun-23	20-Jun-23	NSW	\$5,272	\$5,227	\$6,432	\$7,012	\$7,592	\$9,226
23030MEL	Destination Gold Coast	27-Jun-23	6-Jul-23	QLD	\$7,264	\$7,202	\$8,862	\$9,661	\$10,460	\$12,712
23031MEL	Cable Beach Camels	29-Jun-23	5-Jul-23	TAS	\$10,489	\$10,400	\$12,797	\$13,950	\$15,104	\$18,356
23032MEL	South Pacific Cruise	30-Jun-23	8-Jul-23	CRU	\$7,234	\$7,173	\$8,825	\$9,621	\$10,417	\$12,660
23033MEL	Clarence Valley Delights	11-Jul-23	20-Jul-23	NSW	\$7,917	\$7,850	\$9,659	\$10,530	\$11,400	\$13,855
23034MEL	Top End Adventures	18-Jul-23	24-Jul-23	NT	\$10,381	\$10,293	\$12,665	\$13,807	\$14,949	\$18,167
23035MEL	Valley Xmas in July	24-Jul-23	28-Jul-23	VIC	\$4,114	\$4,079	\$5,019	\$5,472	\$5,924	\$7,200
23036MEL	Cape York 4WD	1-Aug-23	10-Aug-23	QLD	\$12,630	\$12,523	\$15,409	\$16,798	\$18,187	\$22,103
23037MEL	Around the Bay	3-Aug-23	7-Aug-23	VIC	\$4,242	\$4,206	\$5,175	\$5,642	\$6,108	\$7,424
23039MEL	Whales, Dolphins & Fishing	11-Aug-23	17-Aug-23	NSW	\$5,548	\$5,501	\$6,769	\$7,379	\$7,989	\$9,709
23040MEL	Gympie Muster	21-Aug-23	31-Aug-23	QLD	\$8,705	\$8,631	\$10,620	\$11,578	\$12,535	\$15,234
23041MEL	Moreton Island Cruise	31-Aug-23	4-Sep-23	CRU	\$4,379	\$5,342	\$5,342	\$5,824	\$6,306	\$7,663
23042MEL	Royal Adelaide Show	1-Sep-23	7-Sep-23	SA	\$5,562	\$5,515	\$6,786	\$7,397	\$8,009	\$9,734
23043MEL	Trains to Floriade	9-Sep-23	15-Sep-23	NSW	\$5,910	\$5,860	\$7,210	\$7,860	\$8,510	\$10,343
23044MEL	Lakes Fishing & Dolphins	19-Sep-23	24-Sep-23	VIC	\$4,736	\$4,696	\$5,778	\$6,299	\$6,820	\$8,288
23045MEL	Toowoomba Flower Festival	20-Sep-23	29-Sep-23	QLD	\$7,590	\$7,525	\$9,260	\$10,095	\$10,930	\$13,283
23046MEL	Mildura-Wentworth Country Music	27-Sep-23	3-Oct-23	VIC	\$5,330	\$5,285	\$6,503	\$7,089	\$7,675	\$9,328
23047MEL	Bathurst 23	4-Oct-23	10-Oct-23	NSW	\$6,309	\$6,255	\$7,697	\$8,391	\$9,085	\$11,041
23048MEL	Strahan & the West Coast	12-Oct-23	18-Oct-23	TAS	\$7,897	\$7,830	\$9,634	\$10,503	\$11,372	\$13,820
23049MEL	Queensland Cruise	13-Oct-23	20-Oct-23	CRU	\$5,910	\$5,860	\$7,210	\$7,860	\$8,510	\$10,343
23050MEL	Delightful Dandenongs	17-Oct-23	20-Oct-23	VIC	\$3,628	\$3,597	\$4,426	\$4,825	\$5,224	\$6,349
23051MEL	Bay of Islands	30-Oct-23	5-Nov-23	INT	\$8,109	\$8,040	\$9,893	\$10,785	\$11,677	\$14,191
23052MEL	Arkaroola 4WD Experience	1-Nov-23	8-Nov-23	SA	\$6,902	\$6,843	\$8,420	\$9,180	\$9,939	\$12,079
23053MEL	Esperance	2-Nov-23	8-Nov-23	TAS	\$7,923	\$7,856	\$9,666	\$10,538	\$11,409	\$13,865
23054MEL	Wagga Food & Animals	8-Nov-23	15-Nov-23	NSW	\$6,005	\$5,954	\$7,326	\$7,987	\$8,647	\$10,509
23055MEL	All Aboard the Tilt Train	18-Nov-23	24-Nov-23	QLD	\$7,839	\$7,772	\$10,426	\$10,426	\$11,288	\$13,718
23056MEL	Tall Ship Sailing in Hobart	21-Nov-23	28-Nov-23	TAS	\$8,511	\$8,439	\$10,383	\$11,320	\$12,256	\$14,894
23057MEL	NZ to Aust Cruise	27-Nov-23	4-Dec-23	CRU	\$7,278	\$7,216	\$8,879	\$9,680	\$10,480	\$12,737
23058MEL	Perfect Peninsula	2-Dec-23	6-Dec-23	VIC	\$4,539	\$4,500	\$5,538	\$6,037	\$6,536	\$7,943
23059MEL	Heritage Fossicking	12-Dec-23	19-Dec-23	NSW	\$6,850	\$6,792	\$8,357	\$9,111	\$9,864	\$11,988
24001MEL	Glowing NYE on the Gold Coast	27-Dec-23	5-Jan-24	QLD	\$7,658	\$7,593	\$9,343	\$10,185	\$11,028	\$13,402
24002MEL	Melbourne New Year Fireworks	29-Dec-23	2-Jan-24	VIC	\$4,665	\$4,625	\$5,691	\$6,204	\$6,718	\$8,164

BOOK NOW:

www.clubmatestravel.com

1300 158 003

@ info@clubmatestravel.com

# Departure SYDNEY

Tour Code	Tour Name	Start	End	Dest. State	1:5	1:5 Member	1:4	1:3	1:2	1:1
23018SYD	Cairns Attraction	13-Apr-23	19-Apr-23	QLD	\$7,363	\$7,300	\$8,983	\$9,793	\$10,603	\$12,885
23019SYD	Tea, Shopping & Pampering	15-Apr-23	22-Apr-23	QLD	\$5,800	\$5,751	\$7,076	\$7,714	\$8,352	\$10,150
23020SYD	Mountain Pampering	28-Apr-23	2-May-23	NSW	\$4,266	\$4,230	\$5,205	\$5,674	\$6,143	\$7,466
23021SYD	Binns Track 4WDiving	1-May-23	11-May-23	NT	\$11,735	\$11,635	\$14,317	\$15,608	\$16,898	\$20,536
23022SYD	That Fiji Taste	2-May-23	8-May-23	INT	\$8,524	\$8,452	\$10,399	\$11,337	\$12,275	\$14,917
23023SYD	Melbourne's AFL & More!	11-May-23	15-May-23	VIC	\$4,223	\$4,187	\$5,152	\$5,617	\$6,081	\$7,390
23024SYD	Dubbo Glamping	19-May-23	24-May-23	NSW	\$5,041	\$4,998	\$6,150	\$6,705	\$7,259	\$8,822
23025SYD	Warrnambool Wonders	26-May-23	30-May-23	VIC	\$4,158	\$4,123	\$5,073	\$5,530	\$5,988	\$4,123
23026SYD	Far North QLD Cruise	27-May-23	3-Jun-23	CRU	\$7,070	\$7,010	\$8,625	\$9,403	\$10,181	\$12,373
23027SYD	Eat, Play & Stay - Sunshine	2-Jun-23	9-Jun-23	QLD	\$5,996	\$5,945	\$7,315	\$7,975	\$8,634	\$10,493
23028SYD	Feel that NRL Roar!	8-Jun-23	12-Jun-23	QLD	\$5,405	\$5,359	\$6,594	\$7,189	\$7,783	\$9,459
23006SYD	Comedy Cruise	9-Jun-23	12-Jun-23	CRU	\$3,069	\$3,043	\$3,744	\$4,082	\$4,419	\$5,371
23029SYD	Gardens, Markets & Museums	15-Jun-23	19-Jun-23	NSW	\$3,839	\$3,806	\$4,684	\$5,106	\$5,528	\$6,718
23030SYD	Destination Gold Coast	28-Jun-23	5-Jul-23	QLD	\$5,815	\$5,766	\$7,094	\$7,734	\$8,374	\$10,176
23031SYD	Cable Beach Camels	29-Jun-23	5-Jul-23	TAS	\$10,712	\$10,621	\$13,069	\$14,247	\$15,425	\$18,746
23032SYD	South Pacific Cruise	30-Jun-23	8-Jul-23	CRU	\$6,654	\$6,597	\$8,118	\$8,850	\$9,582	\$11,645
23033SYD	Clarence Valley Delights	12-Jul-23	19-Jul-23	NSW	\$7,130	\$7,069	\$8,699	\$9,483	\$10,267	\$12,478
23034SYD	Top End Adventures	18-Jul-23	24-Jul-23	NT	\$9,781	\$9,698	\$11,933	\$13,009	\$14,085	\$17,117
23035SYD	Valley Xmas in July	24-Jul-23	28-Jul-23	VIC	\$4,752	\$4,712	\$5,797	\$6,320	\$6,843	\$8,316
23036SYD	Cape York 4WD	1-Aug-23	10-Aug-23	QLD	\$12,586	\$12,479	\$15,355	\$16,739	\$18,124	\$22,026
23037SYD	Around the Bay	3-Aug-23	7-Aug-23	VIC	\$4,880	\$4,839	\$5,954	\$6,490	\$7,027	\$8,540
23039SYD	Whales, Dolphins & Fishing	10-Aug-23	17-Aug-23	NSW	\$6,930	\$6,871	\$8,455	\$9,217	\$9,979	\$12,128
23040SYD	Gympie Muster	21-Aug-23	29-Aug-23	QLD	\$7,388	\$7,325	\$9,013	\$9,826	\$10,639	\$12,929
23041SYD	Moreton Island Cruise	31-Aug-23	4-Sep-23	CRU	\$3,799	\$4,635	\$4,635	\$5,053	\$5,471	\$6,648
23042SYD	Royal Adelaide Show	31-Aug-23	7-Sep-23	SA	\$6,561	\$6,505	\$8,004	\$8,726	\$9,448	\$11,482
23043SYD	Trains to Floriade	9-Sep-23	15-Sep-23	NSW	\$6,331	\$6,277	\$7,724	\$8,420	\$9,117	\$11,079
23044SYD	Lakes Fishing & Dolphins	18-Sep-23	24-Sep-23	VIC	\$6,270	\$6,217	\$7,649	\$8,339	\$9,029	\$10,973
23045SYD	Toowoomba Flower Festival	21-Sep-23	28-Sep-23	QLD	\$6,171	\$6,119	\$7,529	\$8,207	\$8,886	\$10,799
23046SYD	Mildura-Wentworth Country Music	26-Sep-23	3-Oct-23	VIC	\$6,865	\$6,807	\$8,375	\$9,130	\$9,886	\$12,014
23047SYD	Bathurst 23	5-Oct-23	9-Oct-23	NSW	\$4,904	\$4,862	\$5,983	\$6,522	\$7,062	\$8,582
23048SYD	Strahan & the West Coast	12-Oct-23	18-Oct-23	TAS	\$8,426	\$8,354	\$10,280	\$11,207	\$12,133	\$14,746
23049SYD	Queensland Cruise	13-Oct-23	20-Oct-23	CRU	\$5,878	\$5,828	\$7,171	\$7,818	\$8,464	\$10,287
23050SYD	Delightful Dandenongs	17-Oct-23	20-Oct-23	VIC	\$4,266	\$4,230	\$5,205	\$5,674	\$6,143	\$7,466
23051SYD	Bay of Islands	30-Oct-23	5-Nov-23	INT	\$8,350	\$8,279	\$10,187	\$11,106	\$12,024	\$14,613
23052SYD	Arkaroola 4WD Experience	31-Oct-23	8-Nov-23	SA	\$8,437	\$8,365	\$10,293	\$11,221	\$12,149	\$14,765
23053SYD	Esperance	2-Nov-23	8-Nov-23	TAS	\$7,817	\$7,751	\$9,537	\$10,397	\$11,256	\$13,680
23054SYD	Wagga Food & Animals	9-Nov-23	15-Nov-23	NSW	\$6,846	\$6,788	\$8,352	\$9,105	\$9,858	\$11,981
23055SYD	All Aboard the Tilt Train	18-Nov-23	24-Nov-23	QLD	\$7,738	\$7,672	\$10,292	\$10,292	\$11,143	\$13,542
23056SYD	Tall Ship Sailing in Hobart	21-Nov-23	28-Nov-23	TAS	\$9,040	\$8,963	\$11,029	\$12,023	\$13,018	\$15,820
23057SYD	NZ to Aust Cruise	27-Nov-23	4-Dec-23	CRU	\$7,329	\$7,267	\$8,941		\$10,554	\$12,826
23058SYD	Perfect Peninsula	2-Dec-23	6-Dec-23	VIC	\$5,177	\$5,133	\$6,316	\$6,885	\$7,455	\$9,060
23059SYD	Heritage Fossicking	12-Dec-23	19-Dec-23	NSW	\$7,807	\$7,741	\$9,525	\$10,383	\$11,242	\$13,662
24001SYD	Glowing NYE on the Gold Coast	27-Dec-23	5-Jan-24	QLD	\$6,898	\$6,839	\$8,416	\$9,174	\$9,933	\$12,072
24002SYD	Melbourne New Year Fireworks	29-Dec-23	2-Jan-24	VIC	\$5,412	\$5,366	\$6,603	\$7,198	\$7,793	\$9,471

BOOK NOW:

[www.clubmatestravel.com](http://www.clubmatestravel.com)



1300 158 003



[info@clubmatestravel.com](mailto:info@clubmatestravel.com)



**ClubMates**  
TRAVEL



# Departure CANBERRA

Tour Code	Tour Name	Start	End	Dest. State	1:5	1:5 Member	1:4	1:3	1:2	1:1
23018CBR	Cairns Attraction	13-Apr-23	19-Apr-23	QLD	\$7,515	\$7,451	\$9,168	\$9,995	\$10,822	\$13,151
23019CBR	Tea, Shopping & Pampering	14-Apr-23	23-Apr-23	QLD	\$7,873	\$7,806	\$9,605	\$10,471	\$11,337	\$13,778
23020CBR	Mountain Pampering	28-Apr-23	2-May-23	NSW	\$5,006	\$4,963	\$6,107	\$6,658	\$7,209	\$8,761
23021CBR	Binns Track 4WD Driving	1-May-23	11-May-23	NT	\$12,027	\$11,925	\$14,673	\$15,996	\$17,319	\$21,047
23022CBR	That Fiji Taste	2-May-23	8-May-23	INT	\$8,785	\$8,710	\$10,718	\$11,684	\$12,650	\$15,374
23023CBR	Melbourne's AFL & More!	11-May-23	15-May-23	VIC	\$4,303	\$4,266	\$5,250	\$5,723	\$6,196	\$7,530
23024CBR	Dubbo Glamping	18-May-23	24-May-23	NSW	\$7,097	\$7,037	\$8,658	\$9,439	\$10,220	\$12,420
23025CBR	Warrnambool Wonders	26-May-23	30-May-23	VIC	\$4,237	\$4,201	\$5,169	\$5,635	\$6,101	\$4,201
23026CBR	Far North QLD Cruise	27-May-23	3-Jun-23	CRU	\$7,217	\$7,156	\$8,805	\$9,599	\$10,392	\$12,630
23027CBR	Eat, Play & Stay - Sunshine	31-May-23	10-Jun-23	QLD	\$8,039	\$7,971	\$9,808	\$10,692	\$11,576	\$14,068
23028CBR	Feel that NRL Roar!	8-Jun-23	12-Jun-23	QLD	\$5,753	\$5,704	\$7,019	\$7,651	\$8,284	\$10,068
23006CBR	Comedy Cruise	9-Jun-23	12-Jun-23	CRU	\$3,866	\$3,833	\$4,717	\$5,142	\$5,567	\$6,766
23029CBR	Gardens, Markets & Museums	15-Jun-23	19-Jun-23	NSW	\$4,317	\$4,280	\$5,267	\$5,742	\$6,216	\$7,555
23030CBR	Destination Gold Coast	27-Jun-23	6-Jul-23	QLD	\$7,873	\$7,806	\$9,605	\$10,471	\$11,337	\$13,778
23031CBR	Cable Beach Camels	29-Jun-23	5-Jul-23	TAS	\$11,356	\$11,259	\$13,854	\$15,103	\$16,353	\$19,873
23032CBR	South Pacific Cruise	30-Jun-23	8-Jul-23	CRU	\$7,451	\$7,388	\$9,090	\$9,910	\$10,729	\$13,039
23033CBR	Clarence Valley Delights	12-Jul-23	19-Jul-23	NSW	\$6,821	\$6,763	\$8,322	\$9,072	\$9,822	\$11,937
23034CBR	Top End Adventures	18-Jul-23	24-Jul-23	NT	\$10,246	\$10,159	\$12,500	\$13,627	\$14,754	\$17,931
23035CBR	Valley Xmas in July	24-Jul-23	28-Jul-23	VIC	\$4,796	\$4,755	\$5,851	\$6,379	\$6,906	\$8,393
23036CBR	Cape York 4WD	1-Aug-23	10-Aug-23	QLD	\$12,730	\$12,622	\$15,531	\$16,931	\$18,331	\$22,278
23037CBR	Around the Bay	3-Aug-23	7-Aug-23	VIC	\$4,923	\$4,881	\$6,006	\$6,548	\$7,089	\$8,615
23039CBR	Whales, Dolphins & Fishing	10-Aug-23	17-Aug-23	NSW	\$7,010	\$6,950	\$8,552	\$9,323	\$10,094	\$12,268
23040CBR	Gympie Muster	20-Aug-23	30-Aug-23	QLD	\$9,314	\$9,235	\$11,363	\$12,388	\$13,412	\$16,300
23041CBR	Moreton Island Cruise	31-Aug-23	4-Sep-23	CRU	\$4,597	\$5,608	\$5,608	\$6,114	\$6,620	\$8,045
23042CBR	Royal Adelaide Show	31-Aug-23	7-Sep-23	SA	\$6,576	\$6,520	\$8,023	\$8,746	\$9,469	\$11,508
23043CBR	Trains to Floriade	8-Sep-23	14-Sep-23	NSW	\$6,604	\$6,548	\$8,057	\$8,783	\$9,510	\$11,557
23044CBR	Lakes Fishing & Dolphins	18-Sep-23	24-Sep-23	VIC	\$6,314	\$6,260	\$7,703	\$8,398	\$9,092	\$11,050
23045CBR	Toowoomba Flower Festival	20-Sep-23	29-Sep-23	QLD	\$8,199	\$8,129	\$10,003	\$10,905	\$11,807	\$14,348
23046CBR	Mildura-Wentworth Country Music	26-Sep-23	3-Oct-23	VIC	\$6,908	\$6,849	\$8,428	\$9,188	\$9,948	\$12,089
23047CBR	Bathurst 23	4-Oct-23	10-Oct-23	NSW	\$7,034	\$6,974	\$8,581	\$9,355	\$10,129	\$12,310
23048CBR	Strahan & the West Coast	12-Oct-23	18-Oct-23	TAS	\$8,506	\$8,434	\$10,377	\$11,313	\$12,249	\$14,886
23049CBR	Queensland Cruise	13-Oct-23	20-Oct-23	CRU	\$6,026	\$5,975	\$7,352	\$8,015	\$8,677	\$10,546
23050CBR	Delightful Dandenongs	17-Oct-23	20-Oct-23	VIC	\$4,310	\$4,273	\$5,258	\$5,732	\$6,206	\$7,543
23051CBR	Bay of Islands	30-Oct-23	5-Nov-23	INT	\$8,361	\$8,290	\$10,200	\$11,120	\$12,040	\$14,632
23052CBR	Arkaroola 4WD Experience	31-Oct-23	8-Nov-23	SA	\$8,480	\$8,408	\$10,346	\$11,278	\$12,211	\$14,840
23053CBR	Esperance	2-Nov-23	8-Nov-23	TAS	\$8,738	\$8,664	\$10,660	\$11,622	\$12,583	\$15,292
23054CBR	Wagga Food & Animals	9-Nov-23	15-Nov-23	NSW	\$6,788	\$6,730	\$8,281	\$9,028	\$9,775	\$11,879
23055CBR	All Aboard the Tilt Train	18-Nov-23	24-Nov-23	QLD	\$8,086	\$8,017	\$10,754	\$10,754	\$11,644	\$14,151
23056CBR	Tall Ship Sailing in Hobart	21-Nov-23	28-Nov-23	TAS	\$9,120	\$9,042	\$11,126	\$12,130	\$13,133	\$15,960
23057CBR	NZ to Aust Cruise	27-Nov-23	4-Dec-23	CRU	\$7,443	\$7,380	\$9,080	\$9,899	\$10,718	\$13,025
23058CBR	Perfect Peninsula	2-Dec-23	6-Dec-23	VIC	\$5,220	\$5,176	\$6,368	\$6,943	\$7,517	\$9,135
23059CBR	Heritage Fossicking	11-Dec-23	19-Dec-23	NSW	\$8,428	\$8,356	\$10,282	\$11,209	\$12,136	\$14,749
24001CBR	Glowing NYE on the Gold Coast	27-Dec-23	5-Jan-24	QLD	\$8,397	\$8,326	\$10,244	\$11,168	\$12,092	\$14,695
24002CBR	Melbourne New Year Fireworks	29-Dec-23	2-Jan-24	VIC	\$5,419	\$5,373	\$5,550	\$7,207	\$7,803	\$9,483

# Departure DARWIN

Tour Code	Tour Name	Start	End	Dest. State	1:5	1:5 Member	1:4	1:3	1:2	1:1
23018DRW	Cairns Attraction	13-Apr-23	19-Apr-23	QLD	\$7,256	\$7,194	\$8,852	\$9,650	\$10,449	\$12,698
23019DRW	Tea, Shopping & Pampering	13-Apr-23	23-Apr-23	QLD	\$9,595	\$9,513	\$11,706	\$12,761	\$13,817	\$16,791
23020DRW	Mountain Pampering	26-Apr-23	3-May-23	NSW	\$8,195	\$8,125	\$9,998	\$10,899	\$11,801	\$14,341
23021DRW	Binns Track 4WD Driving	1-May-23	11-May-23	NT	\$12,347	\$12,242	\$15,063	\$16,422	\$17,780	\$21,607
23022DRW	That Fiji Taste	2-May-23	8-May-23	INT	\$9,493	\$9,412	\$11,581	\$12,626	\$13,670	\$16,613
23023DRW	Melbourne's AFL & More!	10-May-23	15-May-23	VIC	\$6,069	\$6,017	\$7,404	\$8,072	\$8,739	\$10,621
23024DRW	Dubbo Glamping	18-May-23	24-May-23	NSW	\$7,851	\$7,784	\$9,578	\$10,442	\$11,305	\$13,739
23025DRW	Warrnambool Wonders	25-May-23	30-May-23	VIC	\$6,003	\$5,952	\$7,324	\$7,984	\$8,644	\$5,952
23026DRW	Far North QLD Cruise	27-May-23	3-Jun-23	CRU	\$7,826	\$7,759	\$9,548	\$10,409	\$11,269	\$13,696
23027DRW	Eat, Play & Stay - Sunshine	31-May-23	10-Jun-23	QLD	\$9,762	\$9,679	\$11,910	\$12,983	\$14,057	\$17,084
23028DRW	Feel that NRL Roar!	8-Jun-23	12-Jun-23	QLD	\$6,681	\$6,624	\$8,151	\$8,886	\$9,621	\$11,692
23006DRW	Comedy Cruise	9-Jun-23	12-Jun-23	CRU	\$4,084	\$4,049	\$4,982	\$5,432	\$5,881	\$7,147
23029DRW	Gardens, Markets & Museums	13-Jun-23	20-Jun-23	NSW	\$7,604	\$7,539	\$9,277	\$10,113	\$10,950	\$13,307
23030DRW	Destination Gold Coast	26-Jun-23	6-Jul-23	QLD	\$9,595	\$9,513	\$11,706	\$12,761	\$13,817	\$16,791
23031DRW	Cable Beach Camels	29-Jun-23	5-Jul-23	TAS	\$10,727	\$10,636	\$13,087	\$14,267	\$15,447	\$18,772
23032DRW	South Pacific Cruise	30-Jun-23	8-Jul-23	CRU	\$7,669	\$7,604	\$9,356	\$10,200	\$11,043	\$13,421
23033DRW	Clarence Valley Delights	10-Jul-23	20-Jul-23	NSW	\$10,249	\$10,162	\$12,504	\$13,631	\$14,759	\$17,936
23034DRW	Top End Adventures	18-Jul-23	24-Jul-23	NT	\$8,076	\$8,007	\$9,853	\$10,741	\$11,629	\$14,133
23035DRW	Valley Xmas in July	23-Jul-23	28-Jul-23	VIC	\$6,446	\$6,391	\$7,864	\$8,573	\$9,282	\$11,281
23036DRW	Cape York 4WD	1-Aug-23	10-Aug-23	QLD	\$12,470	\$12,364	\$15,213	\$16,585	\$17,957	\$21,823
23037DRW	Around the Bay	2-Aug-23	7-Aug-23	VIC	\$6,573	\$6,517	\$8,019	\$8,742	\$9,465	\$11,503
23039DRW	Whales, Dolphins & Fishing	10-Aug-23	17-Aug-23	NSW	\$7,880	\$7,813	\$9,614	\$10,480	\$11,347	\$13,790
23040DRW	Gympie Muster	19-Aug-23	30-Aug-23	QLD	\$11,037	\$10,943	\$13,465	\$14,679	\$15,893	\$19,315
23041DRW	Moreton Island Cruise	31-Aug-23	4-Sep-23	CRU	\$4,814	\$5,873	\$5,873	\$6,403	\$6,932	\$8,425
23042DRW	Royal Adelaide Show	31-Aug-23	7-Sep-23	SA	\$7,446	\$7,383	\$9,084	\$9,903	\$10,722	\$13,031
23043DRW	Trains to Floriade	8-Sep-23	15-Sep-23	NSW	\$8,242	\$8,172	\$10,055	\$10,962	\$11,868	\$14,424
23044DRW	Lakes Fishing & Dolphins	18-Sep-23	24-Sep-23	VIC	\$7,068	\$7,008	\$8,623	\$9,400	\$10,178	\$12,369
23045DRW	Toowoomba Flower Festival	19-Sep-23	29-Sep-23	QLD	\$9,921	\$9,837	\$12,104	\$13,195	\$14,286	\$17,362
23046DRW	Mildura-Wentworth Country Music	26-Sep-23	3-Oct-23	VIC	\$7,662	\$7,597	\$9,348	\$10,190	\$11,033	\$13,409
23047DRW	Bathurst 23	3-Oct-23	10-Oct-23	NSW	\$8,641	\$8,568	\$10,542	\$11,493	\$12,443	\$15,122
23048DRW	Strahan & the West Coast	12-Oct-23	18-Oct-23	TAS	\$9,376	\$9,296	\$11,439	\$12,470	\$13,501	\$16,408
23049DRW	Queensland Cruise	13-Oct-23	20-Oct-23	CRU	\$6,635	\$6,579	\$8,095	\$8,825	\$9,554	\$11,611
23050DRW	Delightful Dandenongs	16-Oct-23	20-Oct-23	VIC	\$5,960	\$5,909	\$7,271	\$7,927	\$8,582	\$10,430
23051DRW	Bay of Islands	30-Oct-23	5-Nov-23	INT	\$9,263	\$9,184	\$11,301	\$12,320	\$13,339	\$16,210
23052DRW	Arkaroola 4WD Experience	31-Oct-23	8-Nov-23	SA	\$9,234	\$9,156	\$11,265	\$12,281	\$13,297	\$16,160
23053DRW	Esperance	2-Nov-23	8-Nov-23	TAS	\$8,376	\$8,305	\$10,219	\$11,140	\$12,061	\$14,658
23054DRW	Wagga Food & Animals	8-Nov-23	15-Nov-23	NSW	\$8,337	\$8,266	\$10,171	\$11,088	\$12,005	\$14,590
23055DRW	All Aboard the Tilt Train	18-Nov-23	24-Nov-23	QLD	\$9,014	\$8,937	\$11,989	\$11,989	\$12,980	\$15,775
23056DRW	Tall Ship Sailing in Hobart	21-Nov-23	28-Nov-23	TAS	\$9,990	\$9,905	\$12,188	\$13,287	\$14,386	\$17,483
23057DRW	NZ to Aust Cruise	27-Nov-23	4-Dec-23	CRU	\$7,655	\$7,590	\$9,339	\$10,181	\$11,023	\$13,396
23058DRW	Perfect Peninsula	1-Dec-23	6-Dec-23	VIC	\$6,871	\$6,813	\$8,383	\$9,138	\$9,894	\$12,024
23059DRW	Heritage Fossicking	11-Dec-23	19-Dec-23	NSW	\$9,182	\$9,104	\$11,202	\$12,212	\$13,222	\$16,069
24001DRW	Glowing NYE on the Gold Coast	27-Dec-23	5-Jan-24	QLD	\$10,427	\$10,338	\$12,721	\$13,868	\$15,015	\$18,247
24002DRW	Melbourne New Year Fireworks	29-Dec-23	2-Jan-24	VIC	\$7,275	\$7,213	\$8,876	\$9,676	\$10,476	\$12,731



# Departure BRISBANE

Tour Code	Tour Name	Start	End	Dest. State	1:5	1:5 Member	1:4	1:3	1:2	1:1
23018BNE	Cairns Attraction	13-Apr-23	19-Apr-23	QLD	\$7,134	\$7,073	\$8,703	\$9,488	\$10,273	\$12,485
23019BNE	Tea, Shopping & Pampering	17-Apr-23	21-Apr-23	QLD	\$3,755	\$3,723	\$4,581	\$4,994	\$5,407	\$6,571
23020BNE	Mountain Pampering	26-Apr-23	3-May-23	NSW	\$7,499	\$7,435	\$9,149	\$9,974	\$10,799	\$13,123
23021BNE	Binns Track 4WDiving	1-May-23	11-May-23	NT	\$11,927	\$11,826	\$14,551	\$15,863	\$17,175	\$20,872
23022BNE	That Fiji Taste	2-May-23	8-May-23	INT	\$8,621	\$8,548	\$10,518	\$11,466	\$12,414	\$15,087
23023BNE	Melbourne's AFL & More!	11-May-23	15-May-23	VIC	\$4,477	\$4,439	\$5,462	\$5,954	\$6,447	\$7,835
23024BNE	Dubbo Glamping	18-May-23	24-May-23	NSW	\$7,314	\$7,252	\$8,923	\$9,728	\$10,532	\$12,800
23025BNE	Warrnambool Wonders	26-May-23	30-May-23	VIC	\$4,411	\$4,374	\$5,381	\$5,867	\$6,352	\$4,374
23026BNE	Far North QLD Cruise	27-May-23	3-Jun-23	CRU	\$6,384	\$6,330	\$7,788	\$8,491	\$9,193	\$11,172
23027BNE	Eat, Play & Stay - Sunshine	4-Jun-23	8-Jun-23	QLD	\$4,066	\$4,031	\$4,961	\$5,408	\$5,855	\$7,116
23028BNE	Feel that NRL Roar!	8-Jun-23	12-Jun-23	QLD	\$4,796	\$4,755	\$5,851	\$6,379	\$6,906	\$8,393
23006BNE	Comedy Cruise	9-Jun-23	12-Jun-23	CRU	\$3,634	\$3,603	\$4,433	\$4,833	\$5,233	\$6,360
23029BNE	Gardens, Markets & Museums	15-Jun-23	19-Jun-23	NSW	\$4,274	\$4,238	\$5,214	\$5,684	\$6,155	\$7,480
23030BNE	Destination Gold Coast	30-Jun-23	4-Jul-23	QLD	\$3,773	\$3,741	\$4,603	\$5,018	\$5,433	\$6,603
23031BNE	Cable Beach Camels	29-Jun-23	5-Jul-23	TAS	\$10,924	\$10,831	\$13,327	\$14,529	\$15,731	\$19,117
23032BNE	South Pacific Cruise	30-Jun-23	8-Jul-23	CRU	\$7,219	\$7,158	\$8,807	\$9,601	\$10,395	\$12,633
23033BNE	Clarence Valley Delights	12-Jul-23	19-Jul-23	NSW	\$6,778	\$6,720	\$8,269	\$9,015	\$9,760	\$11,862
23034BNE	Top End Adventures	18-Jul-23	24-Jul-23	NT	\$9,475	\$9,394	\$11,560	\$12,602	\$13,644	\$16,581
23035BNE	Valley Xmas in July	24-Jul-23	28-Jul-23	VIC	\$5,013	\$4,970	\$6,116	\$6,667	\$7,219	\$8,773
23036BNE	Cape York 4WD	1-Aug-23	10-Aug-23	QLD	\$12,349	\$12,244	\$15,066	\$16,424	\$17,783	\$21,611
23037BNE	Around the Bay	3-Aug-23	7-Aug-23	VIC	\$5,141	\$5,097	\$6,272	\$6,838	\$7,403	\$8,997
23039BNE	Whales, Dolphins & Fishing	10-Aug-23	17-Aug-23	NSW	\$7,184	\$7,123	\$8,764	\$9,555	\$10,345	\$12,572
23040BNE	Gympie Muster	23-Aug-23	27-Aug-23	QLD	\$4,462	\$4,424	\$5,444	\$5,934	\$6,425	\$7,809
23041BNE	Moreton Island Cruise	31-Aug-23	4-Sep-23	CRU	\$4,365	\$5,325	\$5,325	\$5,805	\$6,286	\$7,639
23042BNE	Royal Adelaide Show	31-Aug-23	7-Sep-23	SA	\$6,750	\$6,693	\$8,235	\$8,978	\$9,720	\$11,813
23043BNE	Trains to Floriade	8-Sep-23	15-Sep-23	NSW	\$7,546	\$7,482	\$9,206	\$10,036	\$10,866	\$13,206
23044BNE	Lakes Fishing & Dolphins	18-Sep-23	24-Sep-23	VIC	\$6,531	\$6,475	\$7,968	\$8,686	\$9,405	\$11,429
23045BNE	Toowoomba Flower Festival	23-Sep-23	27-Sep-23	QLD	\$4,261	\$4,225	\$5,198	\$5,667	\$6,136	\$7,457
23046BNE	Mildura-Wentworth Country Music	26-Sep-23	3-Oct-23	VIC	\$7,126	\$7,065	\$8,694	\$9,478	\$10,261	\$12,471
23047BNE	Bathurst 23	5-Oct-23	9-Oct-23	NSW	\$4,904	\$4,862	\$5,983	\$6,522	\$7,062	\$8,582
23048BNE	Strahan & the West Coast	12-Oct-23	18-Oct-23	TAS	\$8,680	\$8,606	\$10,590	\$11,544	\$12,499	\$15,190
23049BNE	Queensland Cruise	13-Oct-23	20-Oct-23	CRU	\$5,228	\$5,184	\$6,378	\$6,953	\$7,528	\$9,149
23050BNE	Delightful Dandenongs	17-Oct-23	20-Oct-23	VIC	\$4,527	\$4,489	\$5,523	\$6,021	\$6,519	\$7,922
23051BNE	Bay of Islands	30-Oct-23	5-Nov-23	INT	\$8,380	\$8,309	\$10,224	\$11,145	\$12,067	\$14,665
23052BNE	Arkaroola 4WD Experience	31-Oct-23	8-Nov-23	SA	\$8,698	\$8,624	\$10,612	\$11,568	\$12,525	\$15,222
23053BNE	Esperance	2-Nov-23	8-Nov-23	TAS	\$8,158	\$8,089	\$9,953	\$10,850	\$11,748	\$14,277
23054BNE	Wagga Food & Animals	8-Nov-23	15-Nov-23	NSW	\$7,481	\$7,417	\$9,127	\$9,950	\$10,773	\$13,092
23055BNE	All Aboard the Tilt Train	19-Nov-23	23-Nov-23	QLD	\$5,496	\$5,449	\$7,310	\$7,310	\$7,914	\$9,618
23056BNE	Tall Ship Sailing in Hobart	21-Nov-23	28-Nov-23	TAS	\$9,294	\$9,215	\$11,339	\$12,361	\$13,383	\$16,265
23057BNE	NZ to Aust Cruise	27-Nov-23	4-Dec-23	CRU	\$7,369	\$7,306	\$8,990	\$9,801	\$10,611	\$12,896
23058BNE	Perfect Peninsula	2-Dec-23	6-Dec-23	VIC	\$5,438	\$5,392	\$6,634	\$7,233	\$7,831	\$9,517
23059BNE	Heritage Fossicking	11-Dec-23	19-Dec-23	NSW	\$8,645	\$8,572	\$10,547	\$11,498	\$12,449	\$15,129
24001BNE	Glowing NYE on the Gold Coast	27-Dec-23	5-Jan-24	QLD	\$4,233	\$4,197	\$5,164	\$5,361	\$6,096	\$7,408
24002BNE	Melbourne New Year Fireworks	29-Dec-23	2-Jan-24	VIC	\$5,550	\$5,503	\$6,771	\$7,382	\$7,992	\$9,713

BOOK NOW:

1300 158 003

@ info@clubmatestravel.com

# Departure ADELAIDE

Tour Code	Tour Name	Start	End	Dest. State	1:5	1:5 Member	1:4	1:3	1:2	1:1
23018ADL	Cairns Attraction	13-Apr-23	19-Apr-23	QLD	\$7,050	\$6,990	\$8,601	\$9,377	\$10,152	\$12,338
23019ADL	Tea, Shopping & Pampering	13-Apr-23	23-Apr-23	QLD	\$8,624	\$8,551	\$10,521	\$11,470	\$12,419	\$15,092
23020ADL	Mountain Pampering	26-Apr-23	3-May-23	NSW	\$7,209	\$7,148	\$8,795	\$9,588	\$10,381	\$12,616
23021ADL	Binns Track 4WD Driving	1-May-23	11-May-23	NT	\$11,405	\$11,308	\$13,914	\$15,169	\$16,423	\$19,959
23022ADL	That Fiji Taste	2-May-23	8-May-23	INT	\$9,071	\$8,994	\$11,067	\$12,064	\$13,062	\$15,874
23023ADL	Melbourne's AFL & More!	11-May-23	15-May-23	VIC	\$4,317	\$4,280	\$5,267	\$5,742	\$6,216	\$7,555
23024ADL	Dubbo Glamping	17-May-23	24-May-23	NSW	\$6,995	\$6,936	\$8,534	\$9,303	\$10,073	\$12,241
23025ADL	Warrnambool Wonders	26-May-23	30-May-23	VIC	\$4,252	\$4,216	\$5,187	\$5,655	\$6,123	\$4,216
23026ADL	Far North QLD Cruise	27-May-23	3-Jun-23	CRU	\$7,215	\$7,154	\$8,802	\$9,596	\$10,390	\$12,626
23027ADL	Eat, Play & Stay - Sunshine	31-May-23	10-Jun-23	QLD	\$8,790	\$8,715	\$10,724	\$11,691	\$12,658	\$15,383
23028ADL	Feel that NRL Roar!	8-Jun-23	12-Jun-23	QLD	\$5,695	\$5,647	\$6,948	\$7,574	\$8,201	\$9,966
23006ADL	Comedy Cruise	9-Jun-23	12-Jun-23	CRU	\$3,794	\$3,762	\$4,629	\$5,046	\$5,463	\$6,640
23029ADL	Gardens, Markets & Museums	13-Jun-23	20-Jun-23	NSW	\$6,749	\$6,692	\$8,234	\$8,976	\$9,719	\$11,811
23030ADL	Destination Gold Coast	26-Jun-23	6-Jul-23	QLD	\$8,754	\$8,680	\$10,680	\$11,643	\$12,606	\$15,320
23031ADL	Cable Beach Camels	29-Jun-23	5-Jul-23	TAS	\$10,460	\$10,371	\$12,761	\$13,912	\$15,062	\$18,305
23032ADL	South Pacific Cruise	30-Jun-23	8-Jul-23	CRU	\$7,379	\$7,316	\$9,002	\$9,814	\$10,626	\$12,913
23033ADL	Clarence Valley Delights	10-Jul-23	20-Jul-23	NSW	\$9,394	\$9,314	\$11,461	\$12,494	\$13,527	\$16,440
23034ADL	Top End Adventures	18-Jul-23	24-Jul-23	NT	\$10,802	\$10,710	\$13,178	\$14,367	\$15,555	\$18,904
23035ADL	Valley Xmas in July	24-Jul-23	28-Jul-23	VIC	\$4,694	\$4,654	\$5,727	\$6,243	\$6,759	\$8,215
23036ADL	Cape York 4WD	1-Aug-23	10-Aug-23	QLD	\$12,395	\$12,290	\$15,122	\$16,485	\$17,849	\$21,691
23037ADL	Around the Bay	3-Aug-23	7-Aug-23	VIC	\$4,822	\$4,781	\$5,883	\$6,413	\$6,944	\$8,439
23039ADL	Whales, Dolphins & Fishing	10-Aug-23	17-Aug-23	NSW	\$7,024	\$6,964	\$8,569	\$9,342	\$10,115	\$12,292
23040ADL	Gympie Muster	19-Aug-23	30-Aug-23	QLD	\$10,196	\$10,109	\$12,439	\$13,561	\$14,682	\$17,843
23041ADL	Moreton Island Cruise	31-Aug-23	4-Sep-23	CRU	\$4,524	\$5,519	\$5,519	\$6,017	\$6,515	\$7,917
23042ADL	Royal Adelaide Show	2-Sep-23	6-Sep-23	SA	\$4,767	\$4,726	\$5,816	\$6,340	\$6,864	\$8,342
23043ADL	Trains to Floriade	8-Sep-23	15-Sep-23	NSW	\$7,387	\$7,324	\$9,012	\$9,825	\$10,637	\$12,927
23044ADL	Lakes Fishing & Dolphins	18-Sep-23	24-Sep-23	VIC	\$6,212	\$6,159	\$7,579	\$8,262	\$8,945	\$10,871
23045ADL	Toowoomba Flower Festival	19-Sep-23	29-Sep-23	QLD	\$8,950	\$8,874	\$10,919	\$11,904	\$12,888	\$15,663
23046ADL	Mildura-Wentworth Country Music	26-Sep-23	3-Oct-23	VIC	\$6,676	\$6,619	\$8,145	\$8,879	\$9,613	\$11,683
23047ADL	Bathurst 23	3-Oct-23	10-Oct-23	NSW	\$7,785	\$7,719	\$9,498	\$10,354	\$11,210	\$13,624
23048ADL	Strahan & the West Coast	12-Oct-23	18-Oct-23	TAS	\$8,521	\$8,449	\$10,396	\$11,333	\$12,270	\$14,912
23049ADL	Queensland Cruise	13-Oct-23	20-Oct-23	CRU	\$6,023	\$5,972	\$7,348	\$8,011	\$8,673	\$10,540
23050ADL	Delightful Dandenongs	17-Oct-23	20-Oct-23	VIC	\$4,208	\$4,172	\$5,134	\$5,597	\$6,060	\$7,364
23051ADL	Bay of Islands	30-Oct-23	5-Nov-23	INT	\$8,602	\$8,529	\$10,494	\$11,441	\$12,387	\$15,054
23052ADL	Arkaroola 4WD Experience	31-Oct-23	8-Nov-23	SA	\$8,379	\$8,308	\$10,222	\$11,144	\$12,066	\$14,663
23053ADL	Esperance	2-Nov-23	8-Nov-23	TAS	\$7,873	\$7,806	\$9,605	\$10,471	\$11,337	\$13,778
23054ADL	Wagga Food & Animals	8-Nov-23	15-Nov-23	NSW	\$7,481	\$7,417	\$9,127	\$9,950	\$10,773	\$13,092
23055ADL	All Aboard the Tilt Train	18-Nov-23	24-Nov-23	QLD	\$8,028	\$7,960	\$9,794	\$10,677	\$11,560	\$14,049
23056ADL	Tall Ship Sailing in Hobart	21-Nov-23	28-Nov-23	TAS	\$9,134	\$9,056	\$11,143	\$12,148	\$13,153	\$15,985
23057ADL	NZ to Aust Cruise	27-Nov-23	4-Dec-23	CRU	\$7,385	\$7,322	\$9,010	\$9,822	\$10,634	\$12,924
23058ADL	Perfect Peninsula	2-Dec-23	6-Dec-23	VIC	\$5,119	\$5,075	\$6,245	\$6,808	\$7,371	\$8,958
23059ADL	Heritage Fossicking	11-Dec-23	19-Dec-23	NSW	\$8,326	\$8,255	\$10,158	\$11,074	\$11,989	\$14,571
24001ADL	Glowing NYE on the Gold Coast	27-Dec-23	5-Jan-24	QLD	\$9,296	\$9,217	\$11,341	\$12,364	\$13,386	\$16,268
24002ADL	Melbourne New Year Fireworks	29-Dec-23	2-Jan-24	VIC	\$5,347	\$5,302	\$6,523	\$7,112	\$7,700	\$9,357



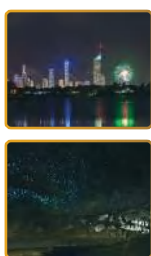
# Departure HOBART

Tour Code	Tour Name	Start	End	Dest. State	1:5	1:5 Member	1:4	1:3	1:2	1:1
23018HBA	Cairns Attraction	13-Apr-23	19-Apr-23	QLD	\$7,393	\$7,330	\$9,019	\$9,833	\$10,646	\$12,938
23019HBA	Tea, Shopping & Pampering	13-Apr-23	23-Apr-23	QLD	\$8,682	\$8,608	\$10,592	\$11,547	\$12,502	\$15,194
23020HBA	Mountain Pampering	26-Apr-23	3-May-23	NSW	\$7,282	\$7,220	\$8,884	\$9,685	\$10,486	\$12,744
23021HBA	Binns Track 4WDiving	1-May-23	11-May-23	NT	\$12,051	\$11,949	\$14,702	\$16,028	\$17,353	\$21,089
23022HBA	That Fiji Taste	2-May-23	8-May-23	INT	\$8,835	\$8,760	\$10,779	\$11,751	\$12,722	\$15,461
23023HBA	Melbourne's AFL & More!	11-May-23	15-May-23	VIC	\$4,259	\$4,223	\$5,196	\$5,664	\$6,133	\$7,453
23024HBA	Dubbo Glamping	18-May-23	24-May-23	NSW	\$7,097	\$7,037	\$8,658	\$9,439	\$10,220	\$12,420
23025HBA	Warrnambool Wonders	26-May-23	30-May-23	VIC	\$4,194	\$4,158	\$5,117	\$5,578	\$6,039	\$4,158
23026HBA	Far North QLD Cruise	27-May-23	3-Jun-23	CRU	\$7,452	\$7,389	\$9,091	\$9,911	\$10,731	\$13,041
23027HBA	Eat, Play & Stay - Sunshine	31-May-23	10-Jun-23	QLD	\$8,848	\$8,773	\$10,795	\$11,768	\$12,741	\$15,484
23028HBA	Feel that NRL Roar!	8-Jun-23	12-Jun-23	QLD	\$5,579	\$5,532	\$6,806	\$7,420	\$8,034	\$9,763
23006HBA	Comedy Cruise	9-Jun-23	12-Jun-23	CRU	\$3,895	\$3,862	\$4,752	\$5,180	\$5,609	\$5,816
23029HBA	Gardens, Markets & Museums	13-Jun-23	20-Jun-23	NSW	\$6,691	\$6,634	\$8,163	\$8,899	\$9,635	\$11,709
23030HBA	Destination Gold Coast	26-Jun-23	6-Jul-23	QLD	\$8,682	\$8,608	\$10,592	\$11,547	\$12,502	\$15,194
23031HBA	Cable Beach Camels	29-Jun-23	5-Jul-23	TAS	\$11,214	\$11,119	\$13,681	\$14,915	\$16,148	\$19,625
23032HBA	South Pacific Cruise	30-Jun-23	8-Jul-23	CRU	\$7,480	\$7,416	\$9,126	\$9,948	\$10,771	\$13,090
23033HBA	Clarence Valley Delights	10-Jul-23	20-Jul-23	NSW	\$9,336	\$9,257	\$11,390	\$12,417	\$13,444	\$16,338
23034HBA	Top End Adventures	18-Jul-23	24-Jul-23	NT	\$10,613	\$10,523	\$12,948	\$14,115	\$15,283	\$18,573
23035HBA	Valley Xmas in July	24-Jul-23	28-Jul-23	VIC	\$4,796	\$4,755	\$5,851	\$6,379	\$6,906	\$8,393
23036HBA	Cape York 4WD	1-Aug-23	10-Aug-23	QLD	\$12,652	\$12,544	\$15,435	\$16,827	\$18,219	\$22,141
23037HBA	Around the Bay	3-Aug-23	7-Aug-23	VIC	\$4,923	\$4,881	\$6,006	\$6,548	\$7,089	\$8,615
23039HBA	Whales, Dolphins & Fishing	10-Aug-23	17-Aug-23	NSW	\$6,966	\$6,907	\$8,499	\$9,265	\$10,031	\$12,191
23040HBA	Gympie Muster	19-Aug-23	30-Aug-23	QLD	\$10,124	\$10,038	\$12,351	\$13,465	\$14,579	\$17,717
23041HBA	Moreton Island Cruise	31-Aug-23	4-Sep-23	CRU	\$4,626	\$5,644	\$5,644	\$6,153	\$6,661	\$8,096
23042HBA	Royal Adelaide Show	31-Aug-23	7-Sep-23	SA	\$6,605	\$6,549	\$8,058	\$8,785	\$9,511	\$11,559
23043HBA	Trains to Floriade	8-Sep-23	15-Sep-23	NSW	\$7,329	\$7,267	\$8,941	\$9,748	\$10,554	\$12,826
23044HBA	Lakes Fishing & Dolphins	18-Sep-23	24-Sep-23	VIC	\$6,314	\$6,260	\$7,703	\$8,398	\$9,092	\$11,050
23045HBA	Toowoomba Flower Festival	19-Sep-23	29-Sep-23	QLD	\$9,008	\$8,931	\$10,990	\$11,981	\$12,972	\$15,764
23046HBA	Mildura-Wentworth Country Music	26-Sep-23	3-Oct-23	VIC	\$6,908	\$6,849	\$8,428	\$9,188	\$9,948	\$12,089
23047HBA	Bathurst 23	3-Oct-23	10-Oct-23	NSW	\$7,887	\$7,820	\$9,622	\$10,490	\$11,357	\$13,802
23048HBA	Strahan & the West Coast	12-Oct-23	18-Oct-23	TAS	\$8,463	\$8,391	\$10,325	\$11,256	\$12,187	\$14,810
23049HBA	Queensland Cruise	13-Oct-23	20-Oct-23	CRU	\$6,260	\$6,207	\$7,637	\$8,326	\$9,014	\$10,955
23050HBA	Delightful Dandenongs	17-Oct-23	20-Oct-23	VIC	\$4,310	\$4,273	\$5,258	\$5,732	\$6,206	\$7,543
23051HBA	Bay of Islands	30-Oct-23	5-Nov-23	INT	\$8,602	\$8,529	\$10,494	\$11,441	\$12,387	\$15,054
23052HBA	Arkaroola 4WD Experience	31-Oct-23	8-Nov-23	SA	\$8,480	\$8,408	\$10,346	\$11,278	\$12,211	\$14,840
23053HBA	Esperance	2-Nov-23	8-Nov-23	TAS	\$8,045	\$7,977	\$9,815	\$10,700	\$11,585	\$14,079
23054HBA	Wagga Food & Animals	8-Nov-23	15-Nov-23	NSW	\$7,583	\$7,519	\$9,251	\$10,085	\$10,920	\$13,270
23055HBA	All Aboard the Tilt Train	18-Nov-23	24-Nov-23	QLD	\$7,912	\$7,845	\$10,523	\$10,523	\$11,393	\$13,846
23056HBA	Tall Ship Sailing in Hobart	23-Nov-23	27-Nov-23	TAS	\$5,184	\$5,140	\$6,324	\$6,895	\$7,465	\$9,072
23057HBA	NZ to Aust Cruise	27-Nov-23	4-Dec-23	CRU	\$7,453	\$7,390	\$9,093	\$9,912	\$10,732	\$13,043
23058HBA	Perfect Peninsula	2-Dec-23	6-Dec-23	VIC	\$5,220	\$5,176	\$6,368	\$6,943	\$7,517	\$9,135
23059HBA	Heritage Fossicking	11-Dec-23	19-Dec-23	NSW	\$8,428	\$8,356	\$10,282	\$11,209	\$12,136	\$14,749
24001HBA	Glowing NYE on the Gold Coast	27-Dec-23	5-Jan-24	QLD	\$9,224	\$9,146	\$11,253	\$12,268	\$13,283	\$16,142
24002HBA	Melbourne New Year Fireworks	29-Dec-23	2-Jan-24	VIC	\$5,463	\$5,417	\$6,665	\$7,266	\$7,867	\$9,560

# Departure PERTH

Tour Code	Tour Name	Start	End	Dest. State	1:5	1:5 Member	1:4	1:3	1:2	1:1
23018PER	Cairns Attraction	13-Apr-23	19-Apr-23	QLD	\$8,155	\$8,086	\$9,949	\$10,846	\$11,743	\$14,271
23019PER	Tea, Shopping & Pampering	13-Apr-23	23-Apr-23	QLD	\$9,291	\$9,212	\$11,335	\$12,357	\$13,379	\$16,259
23020PER	Mountain Pampering	26-Apr-23	3-May-23	NSW	\$7,891	\$7,824	\$9,627	\$10,495	\$11,363	\$13,809
23021PER	Binns Track 4WD Driving	1-May-23	11-May-23	NT	\$12,431	\$12,325	\$15,166	\$16,533	\$17,901	\$21,754
23022PER	That Fiji Taste	2-May-23	8-May-23	INT	\$9,505	\$9,424	\$11,596	\$12,642	\$13,687	\$16,634
23023PER	Melbourne's AFL & More!	10-May-23	15-May-23	VIC	\$5,764	\$5,715	\$7,032	\$7,666	\$8,300	\$10,087
23024PER	Dubbo Glamping	18-May-23	24-May-23	NSW	\$7,546	\$7,482	\$9,206	\$10,036	\$10,866	\$13,206
23025PER	Warrnambool Wonders	25-May-23	30-May-23	VIC	\$5,699	\$5,651	\$6,953	\$7,580	\$8,207	\$5,651
23026PER	Far North QLD Cruise	27-May-23	3-Jun-23	CRU	\$7,638	\$7,573	\$9,318	\$10,159	\$10,999	\$13,367
23027PER	Eat, Play & Stay - Sunshine	31-May-23	10-Jun-23	QLD	\$9,457	\$9,377	\$11,538	\$12,578	\$13,618	\$16,550
23028PER	Feel that NRL Roar!	8-Jun-23	12-Jun-23	QLD	\$6,522	\$6,467	\$7,957	\$8,674	\$9,392	\$11,414
23006PER	Comedy Cruise	9-Jun-23	12-Jun-23	CRU	\$4,301	\$4,264	\$5,247	\$5,720	\$6,193	\$7,527
23029PER	Gardens, Markets & Museums	13-Jun-23	20-Jun-23	NSW	\$7,300	\$7,238	\$8,906	\$9,709	\$10,512	\$12,775
23030PER	Destination Gold Coast	26-Jun-23	6-Jul-23	QLD	\$9,291	\$9,212	\$11,335	\$12,357	\$13,379	\$16,259
23031PER	Cable Beach Camels	29-Jun-23	5-Jul-23	TAS	\$9,735	\$9,652	\$11,877	\$12,948	\$14,018	\$17,036
23032PER	South Pacific Cruise	30-Jun-23	8-Jul-23	CRU	\$7,886	\$7,819	\$9,621	\$10,488	\$11,356	\$13,801
23033PER	Clarence Valley Delights	10-Jul-23	20-Jul-23	NSW	\$9,945	\$9,860	\$12,133	\$13,227	\$14,321	\$17,404
23034PER	Top End Adventures	18-Jul-23	24-Jul-23	NT	\$10,794	\$10,702	\$13,169	\$14,356	\$15,543	\$18,890
23035PER	Valley Xmas in July	23-Jul-23	28-Jul-23	VIC	\$6,141	\$6,089	\$7,492	\$8,168	\$8,843	\$10,747
23036PER	Cape York 4WD	1-Aug-23	10-Aug-23	QLD	\$13,369	\$13,255	\$16,310	\$17,781	\$19,251	\$23,396
23037PER	Around the Bay	2-Aug-23	7-Aug-23	VIC	\$6,269	\$6,216	\$7,648	\$8,338	\$9,027	\$10,971
23039PER	Whales, Dolphins & Fishing	10-Aug-23	17-Aug-23	NSW	\$7,575	\$7,511	\$9,242	\$10,075	\$10,908	\$13,256
23040PER	Gympie Muster	19-Aug-23	30-Aug-23	QLD	\$10,733	\$10,642	\$13,094	\$14,275	\$15,456	\$18,783
23041PER	Moreton Island Cruise	31-Aug-23	4-Sep-23	CRU	\$5,032	\$6,139	\$6,139	\$6,693	\$7,246	\$8,806
23042PER	Royal Adelaide Show	31-Aug-23	7-Sep-23	SA	\$7,141	\$7,080	\$8,712	\$9,498	\$10,283	\$12,497
23043PER	Trains to Floriade	8-Sep-23	15-Sep-23	NSW	\$7,938	\$7,871	\$9,684	\$10,558	\$11,431	\$13,892
23044PER	Lakes Fishing & Dolphins	18-Sep-23	24-Sep-23	VIC	\$6,763	\$6,706	\$8,251	\$8,995	\$9,739	\$11,835
23045PER	Toowoomba Flower Festival	19-Sep-23	29-Sep-23	QLD	\$9,617	\$9,535	\$11,733	\$12,791	\$13,848	\$16,830
23046PER	Mildura-Wentworth Country Music	26-Sep-23	3-Oct-23	VIC	\$7,358	\$7,295	\$8,977	\$9,786	\$10,596	\$12,877
23047PER	Bathurst 23	3-Oct-23	10-Oct-23	NSW	\$8,336	\$8,265	\$10,170	\$11,087	\$12,004	\$14,588
23048PER	Strahan & the West Coast	12-Oct-23	18-Oct-23	TAS	\$9,072	\$8,995	\$11,068	\$12,066	\$13,064	\$15,876
23049PER	Queensland Cruise	13-Oct-23	20-Oct-23	CRU	\$6,446	\$6,391	\$7,864	\$8,573	\$9,282	\$11,281
23050PER	Delightful Dandenongs	16-Oct-23	20-Oct-23	VIC	\$5,655	\$5,607	\$6,899	\$7,521	\$8,143	\$9,896
23051PER	Bay of Islands	30-Oct-23	5-Nov-23	INT	\$9,151	\$9,073	\$11,164	\$12,171	\$13,177	\$16,014
23052PER	Arkaroola 4WD Experience	31-Oct-23	8-Nov-23	SA	\$8,930	\$8,854	\$10,895	\$11,877	\$12,859	\$15,628
23053PER	Esperance	2-Nov-23	8-Nov-23	TAS	\$6,621	\$6,565	\$8,078	\$8,806	\$9,534	\$11,587
23054PER	Wagga Food & Animals	8-Nov-23	15-Nov-23	NSW	\$8,032	\$7,964	\$9,799	\$10,683	\$11,566	\$14,056
23055PER	All Aboard the Tilt Train	18-Nov-23	24-Nov-23	QLD	\$8,854	\$8,779	\$11,776	\$11,776	\$12,750	\$15,495
23056PER	Tall Ship Sailing in Hobart	21-Nov-23	28-Nov-23	TAS	\$9,685	\$9,603	\$11,816	\$12,881	\$13,946	\$16,949
23057PER	NZ to Aust Cruise	27-Nov-23	4-Dec-23	CRU	\$7,641	\$7,576	\$9,322	\$10,163	\$11,003	\$13,372
23058PER	Perfect Peninsula	1-Dec-23	6-Dec-23	VIC	\$6,566	\$6,510	\$8,011	\$8,733	\$9,455	\$11,491
23059PER	Heritage Fossicking	11-Dec-23	19-Dec-23	NSW	\$8,877	\$8,802	\$10,830	\$11,806	\$12,783	\$15,535
24001PER	Glowing NYE on the Gold Coast	27-Dec-23	5-Jan-24	QLD	\$10,108	\$10,022	\$12,332	\$13,444	\$14,556	\$17,689
24002PER	Melbourne New Year Fireworks	29-Dec-23	2-Jan-24	VIC	\$7,116	\$7,056	\$8,682	\$9,464	\$10,247	\$12,453





## 24001 GLOWING NYE ON THE GOLD COAST

- Happy New Year Party on the Gold Coast dressed as your favourite movie character!
- Action Packed Rides, Movie Characters, Parades, and great souvenirs at Movie World.
- Visit the heritage listed zoological gardens at Currumbin Wildlife Sanctuary.
- Spend the day at Sea World and visit the dolphins, enjoy the rides, and watch the shows.
- Watch the jet Stunt Extreme Show and finish the day with the Sea World Show.
- See the magical glow worms at Mt Tambourine Glow Worms.



DEPART	DATE	DAYS	TRANSPORT	PRICING						WHEELIES	STATE
				1:5	Members 1:5	1:4	1:3	1:2	1:1		
24001ADL	26 Dec 23 - 5 Jan 24	11	✈️	\$8,792	\$8,717	\$10,726	\$11,693	\$12,660	\$15,386	POA	QLD
24001BNE	30 Dec 23 - 3 Jan 24	5	✈️	\$4,031	\$3,997	\$4,918	\$5,361	\$5,805	\$7,054	POA	QLD
24001CBR	27 Dec 23 - 5 Jan 24	10	✈️	\$7,893	\$7,826	\$9,629	\$10,498	\$11,366	\$13,813	POA	QLD
24001DRW	26 Dec 23 - 5 Jan 24	11	✈️	\$9,923	\$9,839	\$12,106	\$13,198	\$14,289	\$17,365	POA	QLD
24001HBA	26 Dec 23 - 5 Jan 24	11	✈️	\$8,719	\$8,645	\$10,637	\$11,596	\$12,555	\$15,258	POA	QLD
24001MEL	27 Dec 23 - 5 Jan 24	10	✈️	\$7,153	\$7,092	\$8,727	\$9,513	\$10,300	\$12,518	POA	QLD
24001PER	26 Dec 23 - 5 Jan 24	12	✈️	\$9,604	\$9,522	\$11,717	\$12,773	\$13,830	\$16,807	POA	QLD
24001SYD	28 Dec 23 - 4 Jan 24	8	✈️	\$5,956	\$5,905	\$7,266	\$7,921	\$8,577	\$10,423	POA	QLD

Updated pricelist are on page 29 to 36.

## 24002 MELBOURNE NEW YEAR FIREWORKS

- Fireworks galore right in the heart of the CBD.
- Listen to the stories at Bunjilaka Aboriginal Cultural Centre and discover Indigenous paintings at the Milarri Garden.
- Shop till you drop and enjoy a hot jam doughnut at the biggest market in the Southern Hemisphere - The Queen VIC Market.
- Enjoy a tour at the Royal Botanic Gardens and be introduced to the ancestral lands of the Koolin nation.
- Visit Old Melbourne Gaol and then enjoy more shopping at DFO. See the Elephants, otters, seals and the beautiful gardens at the Melbourne Zoo.
- Head deep into the city and enjoy the buzzing laneways and head to Chinatown for lunch and a visit to the Museum.



DEPART	DATE	DAYS	TRANSPORT	PRICING						WHEELIES	STATE
				1:5	Members 1:5	1:4	1:3	1:2	1:1		
24002ADL	29 Dec 23 - 2 Jan 24	5	✈️	\$5,010	\$4,967	\$6,112	\$6,663	\$7,214	\$8,768	POA	VIC
24002BNE	29 Dec 23 - 2 Jan 24	5	✈️	\$5,213	\$5,169	\$6,360	\$6,933	\$7,507	\$9,123	POA	VIC
24002CBR	29 Dec 23 - 2 Jan 24	5	✈️	\$5,083	\$5,040	\$6,201	\$6,760	\$7,320	\$8,895	POA	VIC
24002DRW	28 Dec 23 - 2 Jan 24	6	✈️	\$6,939	\$6,880	\$8,466	\$9,229	\$9,992	\$12,143	POA	VIC
24002HBA	29 Dec 23 - 2 Jan 24	5	✈️	\$5,126	\$5,082	\$6,254	\$6,818	\$7,381	\$8,971	POA	VIC
24002MEL	29 Dec 23 - 2 Jan 24	5	✈️	\$4,329	\$4,292	\$5,281	\$5,758	\$6,234	\$7,576	POA	VIC
24002PER	28 Dec 23 - 2 Jan 24	6	✈️	\$6,779	\$6,721	\$8,270	\$9,016	\$9,762	\$11,863	POA	VIC
24002SYD	29 Dec 23 - 2 Jan 24	5	✈️	\$5,075	\$5,032	\$6,192	\$6,750	\$7,308	\$8,881	POA	VIC

Updated pricelist are on page 29 to 36.



For a full list of  
**ClubMates Travel**

Terms & Conditions

Please refer to our website  
[www.clubmatestravel.com](http://www.clubmatestravel.com)



# ClubMates TRAVEL

## AUSTRALIA

PO. Box 8553  
Carrum Downs VIC 3201  
Phone: 1300 158 003  
Email: [info@clubmatestravel.com](mailto:info@clubmatestravel.com)

Travel Agent  
License number **32728**  
**ABN 25 121 497 890**

For More information,  
Visit [www.clubmatestravel.com](http://www.clubmatestravel.com)  
or call **1300 158 003**

Follow on :

